

(DANRE) chst1 Antibody (C-term)
Purified Rabbit Polyclonal Antibody (Pab)
Catalog # AW5480

Specification

(DANRE) chst1 Antibody (C-term) - Product Information

Application	WB,E
Primary Accession	Q6DBY9
Reactivity	Zebrafish
Host	Rabbit
Clonality	Polyclonal
Calculated MW	Z=48 KDa
Isotype	Rabbit IgG
Antigen Source	HUMAN

(DANRE) chst1 Antibody (C-term) - Additional Information

Gene ID 445124

Antigen Region
341-375

Other Names

Carbohydrate sulfotransferase 1, Keratan sulfate Gal-6 sulfotransferase, KS6ST, KSGal6ST, KSST, chst1

Dilution

WB~~1:1000

Target/Specificity

This (DANRE) chst1 antibody is generated from a rabbit immunized with a KLH conjugated synthetic peptide between 341-375 amino acids from the C-terminal region of human (DANRE) chst1.

Format

Purified polyclonal antibody supplied in PBS with 0.09% (W/V) sodium azide. This antibody is purified through a protein A column, followed by peptide affinity purification.

Storage

Maintain refrigerated at 2-8°C for up to 2 weeks. For long term storage store at -20°C in small aliquots to prevent freeze-thaw cycles.

Precautions

(DANRE) chst1 Antibody (C-term) is for research use only and not for use in diagnostic or therapeutic procedures.

(DANRE) chst1 Antibody (C-term) - Protein Information

Name chst1

Function

Sulfotransferase that utilizes 3'-phospho-5'-adenylyl sulfate (PAPS) as sulfonate donor to catalyze the transfer of sulfate to position 6 of galactose (Gal) residues of keratan.

Cellular Location

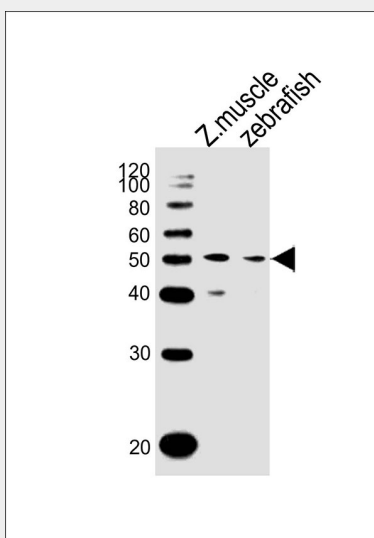
Golgi apparatus membrane; Single-pass type II membrane protein

(DANRE) chst1 Antibody (C-term) - Protocols

Provided below are standard protocols that you may find useful for product applications.

- [Western Blot](#)
- [Blocking Peptides](#)
- [Dot Blot](#)
- [Immunohistochemistry](#)
- [Immunofluorescence](#)
- [Immunoprecipitation](#)
- [Flow Cytometry](#)
- [Cell Culture](#)

(DANRE) chst1 Antibody (C-term) - Images



All lanes : Anti-chst1 Antibody (C-term) at 1:1000 dilution Lane 1: zebrafish muscle lysates Lane 2: zebrafish lysates Lysates/proteins at 20 µg per lane. Secondary Goat Anti-Rabbit IgG, (H+L), Peroxidase conjugated at 1/10000 dilution Predicted band size : 48 kDa Blocking/Dilution buffer: 5% NFDM/TBST.

(DANRE) chst1 Antibody (C-term) - Background

Sulfotransferase that utilizes 3'-phospho-5'-adenylyl sulfate (PAPS) as sulfonate donor to catalyze the transfer of sulfate to position 6 of galactose (Gal) residues of keratan (By similarity).