

**(DANRE) ba2 Antibody (Center)**  
**Purified Rabbit Polyclonal Antibody (Pab)**  
**Catalog # AW5479**

**Specification**

---

**(DANRE) ba2 Antibody (Center) - Product Information**

Application	WB,E
Primary Accession	<a href="#">O90485</a>
Reactivity	Zebrafish
Host	Rabbit
Clonality	Polyclonal
Calculated MW	Z=16 KDa
Isotype	Rabbit IgG
Antigen Source	HUMAN

**(DANRE) ba2 Antibody (Center) - Additional Information**

**Antigen Region**

71-104

**Other Names**

Hemoglobin subunit beta-2, Beta-2-globin, Beta-A2-globin, Hemoglobin beta-2 chain, ba2

**Dilution**

WB~~1:1000

**Target/Specificity**

This (DANRE) ba2 antibody is generated from a rabbit immunized with a KLH conjugated synthetic peptide between 71-104 amino acids from the Central region of human (DANRE) ba2.

**Format**

Purified polyclonal antibody supplied in PBS with 0.09% (W/V) sodium azide. This antibody is purified through a protein A column, followed by peptide affinity purification.

**Storage**

Maintain refrigerated at 2-8°C for up to 2 weeks. For long term storage store at -20°C in small aliquots to prevent freeze-thaw cycles.

**Precautions**

(DANRE) ba2 Antibody (Center) is for research use only and not for use in diagnostic or therapeutic procedures.

**(DANRE) ba2 Antibody (Center) - Protein Information**

**Name** ba2

**Function**

Involved in oxygen transport from gills to the various peripheral tissues.

## Tissue Location

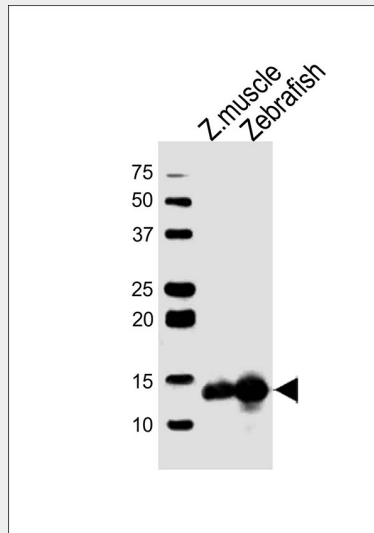
Red blood cells..

## (DANRE) ba2 Antibody (Center) - Protocols

Provided below are standard protocols that you may find useful for product applications.

- [Western Blot](#)
- [Blocking Peptides](#)
- [Dot Blot](#)
- [Immunohistochemistry](#)
- [Immunofluorescence](#)
- [Immunoprecipitation](#)
- [Flow Cytometry](#)
- [Cell Culture](#)

## (DANRE) ba2 Antibody (Center) - Images



All lanes : Anti-ba2 Antibody (Center) at 1:1000 dilution Lane 1: zebrafish muscle lysates Lane 2: zebrafish lysates Lysates/proteins at 20 µg per lane. Secondary Goat Anti-Rabbit IgG, (H+L), Peroxidase conjugated at 1/10000 dilution Predicted band size : 16 kDa Blocking/Dilution buffer: 5% NFDM/TBST.

## (DANRE) ba2 Antibody (Center) - Background

Involved in oxygen transport from gills to the various peripheral tissues.

## (DANRE) ba2 Antibody (Center) - References

Chan F.-Y., et al. Blood 89:688-700(1997).  
Howe K., et al. Nature 496:498-503(2013).