

**(DANRE) sog3b Antibody (C-Term)**  
**Purified Rabbit Polyclonal Antibody (Pab)**  
**Catalog # AW5471**

**Specification**

---

**(DANRE) sog3b Antibody (C-Term) - Product Information**

Application	WB,E
Primary Accession	<a href="#">B3DIQ0</a>
Reactivity	Zebrafish
Host	Rabbit
Clonality	Polyclonal
Calculated MW	Z=22 KDa
Isotype	Rabbit IgG
Antigen Source	HUMAN

**(DANRE) sog3b Antibody (C-Term) - Additional Information**

**Antigen Region**  
198-229

**Dilution**  
WB~~1:1000

**Target/Specificity**  
This DANRE sog3b antibody is generated from a rabbit immunized with a KLH conjugated synthetic peptide between 198-229 amino acids from DANRE sog3b.

**Format**  
Purified polyclonal antibody supplied in PBS with 0.09% (W/V) sodium azide. This antibody is purified through a protein A column, followed by peptide affinity purification.

**Storage**  
Maintain refrigerated at 2-8°C for up to 2 weeks. For long term storage store at -20°C in small aliquots to prevent freeze-thaw cycles.

**Precautions**  
(DANRE) sog3b Antibody (C-Term) is for research use only and not for use in diagnostic or therapeutic procedures.

**(DANRE) sog3b Antibody (C-Term) - Protein Information**

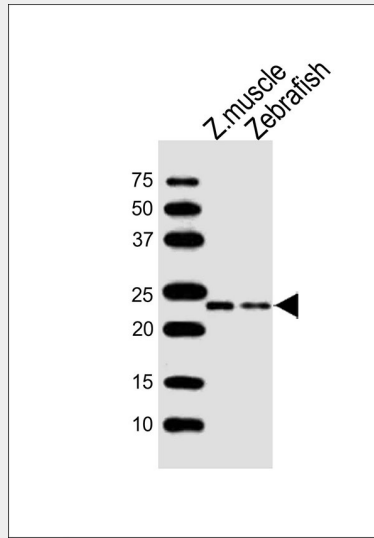
**Name** zgc:195224 {ECO:0000313|EMBL:AAI63208.1}

**(DANRE) sog3b Antibody (C-Term) - Protocols**

Provided below are standard protocols that you may find useful for product applications.

- [Western Blot](#)
- [Blocking Peptides](#)
- [Dot Blot](#)
- [Immunohistochemistry](#)
- [Immunofluorescence](#)
- [Immunoprecipitation](#)
- [Flow Cytometry](#)
- [Cell Culture](#)

**(DANRE) sogas3b Antibody (C-Term) - Images**



All lanes : Anti-soga3b Antibody (C-Term) at 1:1000 dilution Lane 1: zebrafish muscle lysates  
Lane 2: zebrafish lysates Lysates/proteins at 20 µg per lane. Secondary Goat Anti-Rabbit IgG,  
(H+L), Peroxidase conjugated at 1/10000 dilution Predicted band size : 22 kDa Blocking/Dilution  
buffer: 5% NFDM/TBST.