

**(Mouse) Scx Antibody (N-term)**  
**Purified Rabbit Polyclonal Antibody (Pab)**  
**Catalog # AW5469**

### Specification

---

#### **(Mouse) Scx Antibody (N-term) - Product Information**

|                   |                        |
|-------------------|------------------------|
| Application       | <b>WB, IHC-P,E</b>     |
| Primary Accession | <a href="#">O64124</a> |
| Other Accession   | <a href="#">O7RTU7</a> |
| Reactivity        | <b>Mouse</b>           |
| Predicted         | <b>Human</b>           |
| Host              | <b>Rabbit</b>          |
| Clonality         | <b>Polyclonal</b>      |
| Calculated MW     | <b>M=22;H=22 KDa</b>   |
| Isotype           | <b>Rabbit IgG</b>      |
| Antigen Source    | <b>HUMAN</b>           |

#### **(Mouse) Scx Antibody (N-term) - Additional Information**

**Gene ID** 20289

**Antigen Region**  
69-102

**Other Names**  
Basic helix-loop-helix transcription factor scleraxis, Scx

**Dilution**  
WB~~1:1000  
IHC-P~~1:25

**Target/Specificity**  
This mouse Scx antibody is generated from a rabbit immunized with a KLH conjugated synthetic peptide between 69-102 amino acids from the N-terminal region of mouse Scx.

**Format**  
Purified polyclonal antibody supplied in PBS with 0.09% (W/V) sodium azide. This antibody is purified through a protein A column, followed by peptide affinity purification.

**Storage**  
Maintain refrigerated at 2-8°C for up to 2 weeks. For long term storage store at -20°C in small aliquots to prevent freeze-thaw cycles.

**Precautions**  
(Mouse) Scx Antibody (N-term) is for research use only and not for use in diagnostic or therapeutic procedures.

#### **(Mouse) Scx Antibody (N-term) - Protein Information**

## Name Scx

### Function

Plays an early essential role in mesoderm formation, as well as a later role in formation of somite-derived chondrogenic lineages.

### Cellular Location

Nucleus {ECO:0000255|PROSITE-ProRule:PRU00981}.

### Tissue Location

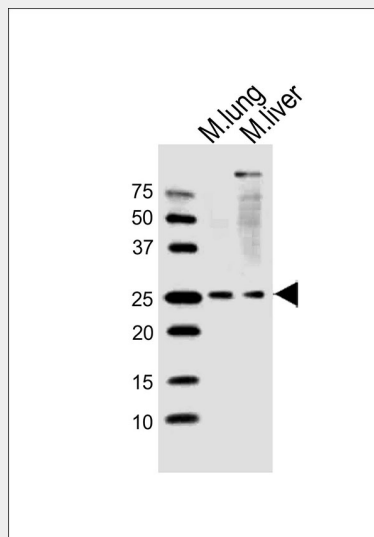
Expressed in mesenchymal precursors of cartilage and in connective tissue. Highly expressed in tendons in the limb, tongue and diaphragm and in cartilage of the bronchi

## (Mouse) Scx Antibody (N-term) - Protocols

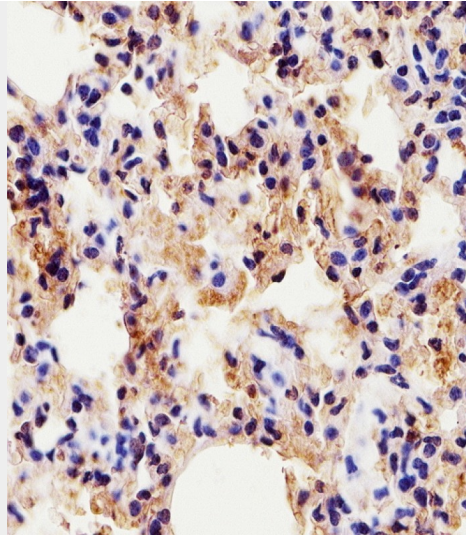
Provided below are standard protocols that you may find useful for product applications.

- [Western Blot](#)
- [Blocking Peptides](#)
- [Dot Blot](#)
- [Immunohistochemistry](#)
- [Immunofluorescence](#)
- [Immunoprecipitation](#)
- [Flow Cytometry](#)
- [Cell Culture](#)

## (Mouse) Scx Antibody (N-term) - Images



All lanes : Anti-Scx Antibody (N-term) at 1:1000 dilution Lane 1: mouse lung lysates Lane 2: mouse liver lysates Lysates/proteins at 20 µg per lane. Secondary Goat Anti-Rabbit IgG, (H+L), Peroxidase conjugated at 1/10000 dilution Predicted band size : 22 kDa Blocking/Dilution buffer: 5% NFDM/TBST.



AW5469 staining Scx in Mouse lung tissue sections by Immunohistochemistry (IHC-P - paraformaldehyde-fixed, paraffin-embedded sections). Tissue was fixed with formaldehyde and blocked with 3% BSA for 0.5 hour at room temperature; antigen retrieval was by heat mediation with a citrate buffer (pH6). Samples were incubated with primary antibody (1/25) for 1 hour at 37°C. A undiluted biotinylated goat polyvalent antibody was used as the secondary antibody.

#### **(Mouse) Scx Antibody (N-term) - Background**

Plays an early essential role in mesoderm formation, as well as a later role in formation of somite-derived chondrogenic lineages.

#### **(Mouse) Scx Antibody (N-term) - References**

Cserjesi P., et al. *Development* 121:1099-1110(1995).  
Brown D., et al. *Development* 126:4317-4329(1999).

#### **(Mouse) Scx Antibody (N-term) - Citations**

- [Single-Cell Analysis of the Muscle Stem Cell Hierarchy Identifies Heterotypic Communication Signals Involved in Skeletal Muscle Regeneration](#)