

HES5 Antibody (Center)
Purified Rabbit Polyclonal Antibody (Pab)
Catalog # AW5467

Specification

HES5 Antibody (Center) - Product Information

Application	WB,E
Primary Accession	Q5TA89
Other Accession	Q03062 , P70120
Reactivity	Human
Predicted	Mouse, Rat
Host	Rabbit
Clonality	Polyclonal
Calculated MW	H=18;M=18;R=18 KDa
Isotype	Rabbit IgG
Antigen Source	HUMAN

HES5 Antibody (Center) - Additional Information

Gene ID 388585

Antigen Region
81-115

Other Names

Transcription factor HES-5, Class B basic helix-loop-helix protein 38, bHLHb38, Hairy and enhancer of split 5, HES5, BHLHB38

Dilution

WB~~1:1000

Target/Specificity

This HES5 antibody is generated from a rabbit immunized with a KLH conjugated synthetic peptide between 81-115 amino acids from the Central region of human HES5.

Format

Purified polyclonal antibody supplied in PBS with 0.09% (W/V) sodium azide. This antibody is purified through a protein A column, followed by peptide affinity purification.

Storage

Maintain refrigerated at 2-8°C for up to 2 weeks. For long term storage store at -20°C in small aliquots to prevent freeze-thaw cycles.

Precautions

HES5 Antibody (Center) is for research use only and not for use in diagnostic or therapeutic procedures.

HES5 Antibody (Center) - Protein Information

Name HES5

Synonyms BHLHB38

Function

Transcriptional repressor of genes that require a bHLH protein for their transcription. Plays an important role as neurogenesis negative regulator (By similarity).

Cellular Location

Nucleus {ECO:0000255|PROSITE-ProRule:PRU00380, ECO:0000255|PROSITE-ProRule:PRU00981}

Tissue Location

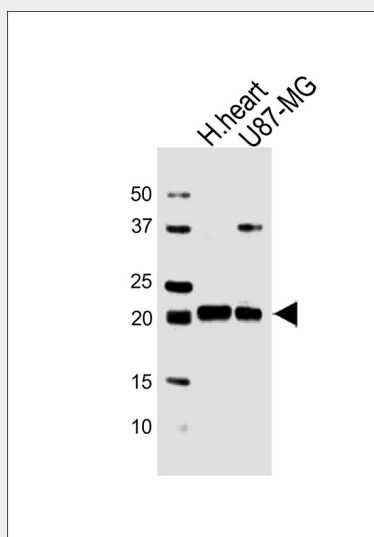
Expressed in fetal heart and brain tumors.

HES5 Antibody (Center) - Protocols

Provided below are standard protocols that you may find useful for product applications.

- [Western Blot](#)
- [Blocking Peptides](#)
- [Dot Blot](#)
- [Immunohistochemistry](#)
- [Immunofluorescence](#)
- [Immunoprecipitation](#)
- [Flow Cytometry](#)
- [Cell Culture](#)

HES5 Antibody (Center) - Images



All lanes : Anti-HES5 Antibody (Center) at 1:1000 dilution Lane 1: human heart lysates Lane 2: U87-MG whole cell lysates Lysates/proteins at 20 µg per lane. Secondary Goat Anti-Rabbit IgG, (H+L), Peroxidase conjugated at 1/10000 dilution Predicted band size : 18 kDa Blocking/Dilution buffer: 5% NFDN/TBST.

HES5 Antibody (Center) - Background

Transcriptional repressor of genes that require a bHLH protein for their transcription. Plays an

important role as neurogenesis negative regulator (By similarity).

HES5 Antibody (Center) - References

Wistow G.,et al.Submitted (NOV-2005) to the EMBL/GenBank/DDBJ databases.

Gregory S.G.,et al.Nature 441:315-321(2006).

Mural R.J.,et al.Submitted (JUL-2005) to the EMBL/GenBank/DDBJ databases.

Katoh M.,et al.Int. J. Oncol. 25:529-534(2004).