

**NAPG Antibody (Center)**  
**Purified Rabbit Polyclonal Antibody (Pab)**  
**Catalog # AW5462**

**Specification**

---

**NAPG Antibody (Center) - Product Information**

Application	WB,E
Primary Accession	<a href="#">O99747</a>
Other Accession	<a href="#">O9CWZ7</a> , <a href="#">P81127</a>
Reactivity	Human, Mouse
Host	Rabbit
Clonality	Polyclonal
Calculated MW	H=35;M=35 KDa
Isotype	Rabbit IgG
Antigen Source	HUMAN

**NAPG Antibody (Center) - Additional Information**

**Gene ID** 8774

**Antigen Region**  
119-152

**Other Names**

Gamma-soluble NSF attachment protein, SNAP-gamma, N-ethylmaleimide-sensitive factor attachment protein gamma, NAPG, SNAPG

**Dilution**

WB~~1:1000

**Target/Specificity**

This NAPG antibody is generated from a rabbit immunized with a KLH conjugated synthetic peptide between 119-152 amino acids from the Central region of human NAPG.

**Format**

Purified polyclonal antibody supplied in PBS with 0.09% (W/V) sodium azide. This antibody is purified through a protein A column, followed by peptide affinity purification.

**Storage**

Maintain refrigerated at 2-8°C for up to 2 weeks. For long term storage store at -20°C in small aliquots to prevent freeze-thaw cycles.

**Precautions**

NAPG Antibody (Center) is for research use only and not for use in diagnostic or therapeutic procedures.

**NAPG Antibody (Center) - Protein Information**

**Name** NAPG ([HGNC:7642](#))

**Function**

Required for vesicular transport between the endoplasmic reticulum and the Golgi apparatus.

**Cellular Location**

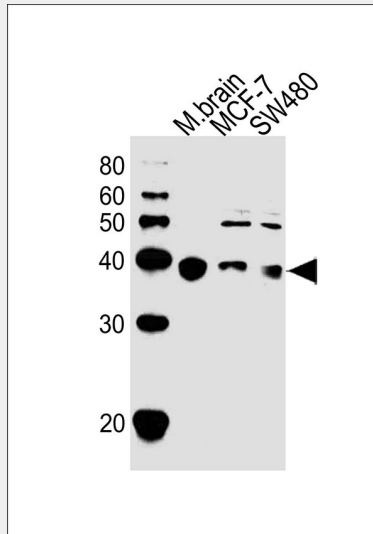
Membrane {ECO:0000250|UniProtKB:P81127}; Peripheral membrane protein {ECO:0000250|UniProtKB:P81127}. Golgi apparatus {ECO:0000250|UniProtKB:Q9CWZ7}

**NAPG Antibody (Center) - Protocols**

Provided below are standard protocols that you may find useful for product applications.

- [Western Blot](#)
- [Blocking Peptides](#)
- [Dot Blot](#)
- [Immunohistochemistry](#)
- [Immunofluorescence](#)
- [Immunoprecipitation](#)
- [Flow Cytometry](#)
- [Cell Culture](#)

**NAPG Antibody (Center) - Images**



All lanes : Anti-NAPG Antibody (Center) at 1:1000 dilution Lane 1: mouse brain lysates Lane 2: MCF-7 whole cell lysates Lane 3: SW480 whole cell lysates Lysates/proteins at 20 µg per lane. Secondary Goat Anti-Rabbit IgG, (H+L), Peroxidase conjugated at 1/10000 dilution Predicted band size : 35 kDa Blocking/Dilution buffer: 5% NFDN/TBST.

**NAPG Antibody (Center) - Background**

Required for vesicular transport between the endoplasmic reticulum and the Golgi apparatus.

**NAPG Antibody (Center) - References**

Lemons P.P.,et al.Blood 90:1490-1500(1997).  
Chen D.,et al.J. Biol. Chem. 276:13127-13135(2001).

Rush J., et al. Nat. Biotechnol. 23:94-101(2005).  
Dephoure N., et al. Proc. Natl. Acad. Sci. U.S.A. 105:10762-10767(2008).  
Burkard T.R., et al. BMC Syst. Biol. 5:17-17(2011).