

HIST1H2BM Antibody (Center)
Purified Rabbit Polyclonal Antibody (Pab)
Catalog # AW5461

Specification

HIST1H2BM Antibody (Center) - Product Information

Application	WB,E
Primary Accession	O99879
Other Accession	P02283 , P57053 , Q9PSW9 , P0C1H5 , P0C1H4 , O6PC60 , O8CGP0 , O8N257 , Q9D2U9 , O5QNW6 , O64524 , Q16778 , Q64525 , Q00715 , Q5BJA5 , P0C1H3 , P62808 , O8CGP2 , P23527 , Q99877 , Q32L48 , P10854 , Q99880 , O8CGP1 , O60814 , Q2M2T1 , P06899 , Q64478 , Q93079 , P10853 , P58876 , Q6ZWY9
Reactivity	Human
Predicted	Xenopus, Mouse, Rat, Bovine, Chicken, Zebrafish, Drosophila
Host	Rabbit
Clonality	Polyclonal
Calculated MW	H=14;M=14 KDa
Isotype	Rabbit IgG
Antigen Source	HUMAN

HIST1H2BM Antibody (Center) - Additional Information

Gene ID 8342

Antigen Region
44-78

Other Names
Histone H2B type 1-M, Histone H2Be, H2B/e, HIST1H2BM, H2BFE

Dilution
WB~~1:1000

Target/Specificity
This HIST1H2BM antibody is generated from a rabbit immunized with a KLH conjugated synthetic peptide between 44-78 amino acids from the Central region of human HIST1H2BM.

Format
Purified polyclonal antibody supplied in PBS with 0.09% (W/V) sodium azide. This antibody is purified through a protein A column, followed by peptide affinity purification.

Storage
Maintain refrigerated at 2-8°C for up to 2 weeks. For long term storage store at -20°C in small aliquots to prevent freeze-thaw cycles.

Precautions

HIST1H2BM Antibody (Center) is for research use only and not for use in diagnostic or therapeutic procedures.

HIST1H2BM Antibody (Center) - Protein Information

Name H2BC14 ([HGNC:4750](#))

Function

Core component of nucleosome. Nucleosomes wrap and compact DNA into chromatin, limiting DNA accessibility to the cellular machineries which require DNA as a template. Histones thereby play a central role in transcription regulation, DNA repair, DNA replication and chromosomal stability. DNA accessibility is regulated via a complex set of post-translational modifications of histones, also called histone code, and nucleosome remodeling.

Cellular Location

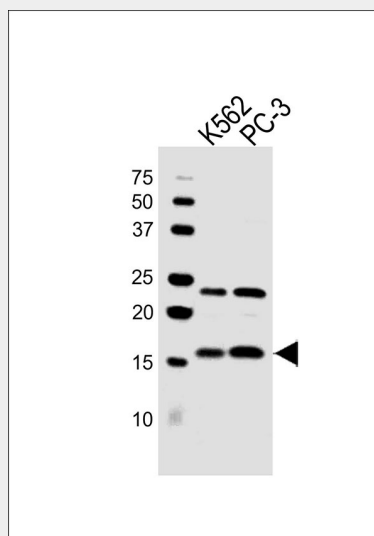
Nucleus. Chromosome.

HIST1H2BM Antibody (Center) - Protocols

Provided below are standard protocols that you may find useful for product applications.

- [Western Blot](#)
- [Blocking Peptides](#)
- [Dot Blot](#)
- [Immunohistochemistry](#)
- [Immunofluorescence](#)
- [Immunoprecipitation](#)
- [Flow Cytometry](#)
- [Cell Culture](#)

HIST1H2BM Antibody (Center) - Images



All lanes : Anti-HIST1H2BM Antibody (Center) at 1:1000 dilution Lane 1: K562 whole cell lysates Lane 2: PC-3 whole cell lysates Lysates/proteins at 20 µg per lane. Secondary Goat Anti-Rabbit IgG, (H+L), Peroxidase conjugated at 1/10000 dilution Predicted band size : 14 kDa

Blocking/Dilution buffer: 5% NFD/MTBST.

HIST1H2BM Antibody (Center) - Background

Core component of nucleosome. Nucleosomes wrap and compact DNA into chromatin, limiting DNA accessibility to the cellular machineries which require DNA as a template. Histones thereby play a central role in transcription regulation, DNA repair, DNA replication and chromosomal stability. DNA accessibility is regulated via a complex set of post-translational modifications of histones, also called histone code, and nucleosome remodeling.

HIST1H2BM Antibody (Center) - References

Albig W.,et al.Hum. Genet. 101:284-294(1997).
Marzluff W.F.,et al.Genomics 80:487-498(2002).
Mungall A.J.,et al.Nature 425:805-811(2003).
Lubec G.,et al.Submitted (MAR-2007) to UniProtKB.
Cheung W.L.,et al.Cell 113:507-517(2003).