

(DANRE) sdhb Antibody
Purified Rabbit Polyclonal Antibody (Pab)
Catalog # AW5454

Specification

(DANRE) sdhb Antibody - Product Information

Application	WB,E
Primary Accession	A5PL98
Other Accession	P21913 , Q007T0 , Q9COA3 , P21912 , Q9YHT2 , Q3T189
Reactivity	Human, Mouse, Rat, Zebrafish
Host	Rabbit
Clonality	Polyclonal
Calculated MW	Z=32;H=32;M=32;R=32 KDa
Isotype	Rabbit IgG
Antigen Source	HUMAN

(DANRE) sdhb Antibody - Additional Information

Gene ID 562149

Antigen Region
147-182

Other Names

Succinate dehydrogenase [ubiquinone] iron-sulfur subunit, mitochondrial, Iron-sulfur subunit of complex II, Ip, sdhb

Dilution

WB~~1:1000

Target/Specificity

This (DANRE) sdhb antibody is generated from a rabbit immunized with a KLH conjugated synthetic peptide between 147-182 amino acids from the region of (DANRE) sdhb.

Format

Purified polyclonal antibody supplied in PBS with 0.09% (W/V) sodium azide. This antibody is purified through a protein A column, followed by peptide affinity purification.

Storage

Maintain refrigerated at 2-8°C for up to 2 weeks. For long term storage store at -20°C in small aliquots to prevent freeze-thaw cycles.

Precautions

(DANRE) sdhb Antibody is for research use only and not for use in diagnostic or therapeutic procedures.

(DANRE) sdhb Antibody - Protein Information

Name sdhb

Function

Iron-sulfur protein (IP) subunit of the succinate dehydrogenase complex (mitochondrial respiratory chain complex II), responsible for transferring electrons from succinate to ubiquinone (coenzyme Q) (By similarity). SDH also oxidizes malate to the non- canonical enol form of oxaloacetate, enol-oxaloacetate. Enol- oxaloacetate, which is a potent inhibitor of the succinate dehydrogenase activity, is further isomerized into keto-oxaloacetate (By similarity).

Cellular Location

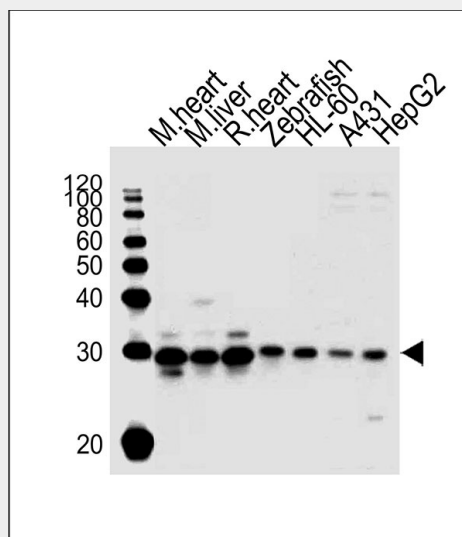
Mitochondrion inner membrane {ECO:0000250|UniProtKB:Q9YHT2}; Peripheral membrane protein {ECO:0000250|UniProtKB:Q9YHT2}; Matrix side {ECO:0000250|UniProtKB:Q9YHT2}

(DANRE) sdhb Antibody - Protocols

Provided below are standard protocols that you may find useful for product applications.

- [Western Blot](#)
- [Blocking Peptides](#)
- [Dot Blot](#)
- [Immunohistochemistry](#)
- [Immunofluorescence](#)
- [Immunoprecipitation](#)
- [Flow Cytometry](#)
- [Cell Culture](#)

(DANRE) sdhb Antibody - Images



All lanes : Anti-sdhb Antibody at 1:1000 dilution Lane 1: mouse heart lysates Lane 2: mouse liver lysates Lane 3: rat heart lysates Lane 4: Zebrafish lysates Lane 5: HL-60 whole cell lysates Lane 6: A431 whole cell lysates Lane 7: HepG2 whole cell lysates Lysates/proteins at 20 µg per lane. Secondary Goat Anti-Rabbit IgG, (H+L), Peroxidase conjugated at 1/10000 dilution Predicted band size : 32 kDa Blocking/Dilution buffer: 5% NFDN/TBST.

(DANRE) sdhb Antibody - Background

Iron-sulfur protein (IP) subunit of succinate dehydrogenase (SDH) that is involved in complex II of

the mitochondrial electron transport chain and is responsible for transferring electrons from succinate to ubiquinone (coenzyme Q) (By similarity).