

GNL3 Antibody (N-term)
Purified Rabbit Polyclonal Antibody (Pab)
Catalog # AW5435

Specification

GNL3 Antibody (N-term) - Product Information

Application	IF, WB,E
Primary Accession	Q9BVP2
Reactivity	Human
Host	Rabbit
Clonality	Polyclonal
Calculated MW	H=62, 61 KDa
Isotype	Rabbit IgG
Antigen Source	HUMAN

GNL3 Antibody (N-term) - Additional Information

Gene ID 26354

Antigen Region
91-124

Other Names

Guanine nucleotide-binding protein-like 3, E2-induced gene 3 protein, Novel nucleolar protein 47, NNP47, Nucleolar GTP-binding protein 3, Nucleostemin, GNL3, E2IG3, NS

Dilution

IF~~1:25
WB~~1:1000

Target/Specificity

This GNL3 antibody is generated from a rabbit immunized with a KLH conjugated synthetic peptide between 91-124 amino acids from the N-terminal region of human GNL3.

Format

Purified polyclonal antibody supplied in PBS with 0.09% (W/V) sodium azide. This antibody is purified through a protein A column, followed by peptide affinity purification.

Storage

Maintain refrigerated at 2-8°C for up to 2 weeks. For long term storage store at -20°C in small aliquots to prevent freeze-thaw cycles.

Precautions

GNL3 Antibody (N-term) is for research use only and not for use in diagnostic or therapeutic procedures.

GNL3 Antibody (N-term) - Protein Information

Name GNL3

Synonyms E2IG3, NS

Function

May be required to maintain the proliferative capacity of stem cells. Stabilizes MDM2 by preventing its ubiquitination, and hence proteasomal degradation (By similarity).

Cellular Location

Nucleus {ECO:0000250|UniProtKB:Q811S9}. Nucleus, nucleolus. Note=Shuttles between the nucleus and nucleolus. {ECO:0000250|UniProtKB:Q811S9}

Tissue Location

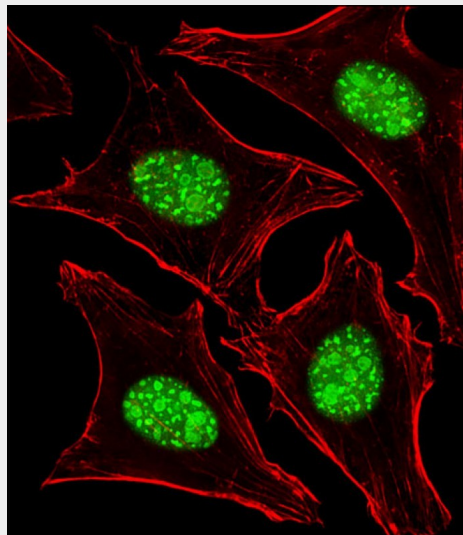
Increased levels in lung tissue in cancer patients.

GNL3 Antibody (N-term) - Protocols

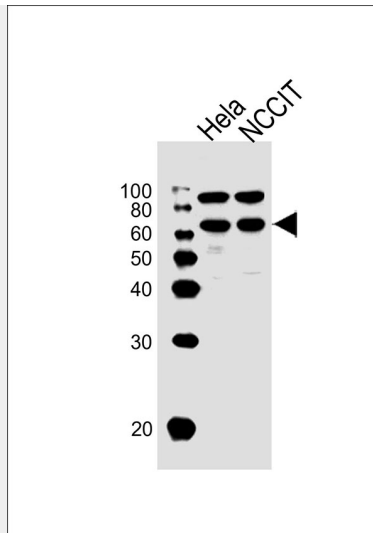
Provided below are standard protocols that you may find useful for product applications.

- [Western Blot](#)
- [Blocking Peptides](#)
- [Dot Blot](#)
- [Immunohistochemistry](#)
- [Immunofluorescence](#)
- [Immunoprecipitation](#)
- [Flow Cytometry](#)
- [Cell Culture](#)

GNL3 Antibody (N-term) - Images



Immunofluorescent analysis of 4% paraformaldehyde-fixed, 0.1% Triton X-100 permeabilized HeLa (Human cervical epithelial adenocarcinoma cell line) cells labeling GNL3 with AW5435 at 1/25 dilution, followed by Alexa Fluor 488-conjugated goat anti-rabbit IgG (1583138) secondary antibody at 1/400 dilution (green). Confocal image showing both nuclear staining on HeLa cell line. Cytoplasmic actin is detected with Alexa Fluor® 555 conjugated with Phalloidin (OB16636430) at 1/100 dilution (red).



All lanes : Anti-GNL3 Antibody (N-term) at 1:1000 dilution Lane 1: HeLa whole cell lysates Lane 2: NCCIT whole cell lysates Lysates/proteins at 20 μ g per lane. Secondary Goat Anti-Rabbit IgG, (H+L), Peroxidase conjugated at 1/10000 dilution Predicted band size : 62 kDa Blocking/Dilution buffer: 5% NFDN/TBST.

GNL3 Antibody (N-term) - Background

May be required to maintain the proliferative capacity of stem cells. Stabilizes MDM2 by preventing its ubiquitination, and hence proteasomal degradation (By similarity).

GNL3 Antibody (N-term) - References

- Charpentier A.H., et al. *Cancer Res.* 60:5977-5983(2000).
- Han C., et al. *Int. J. Mol. Med.* 16:205-213(2005).
- Ota T., et al. *Nat. Genet.* 36:40-45(2004).
- Muzny D.M., et al. *Nature* 440:1194-1198(2006).
- Andersen J.S., et al. *Curr. Biol.* 12:1-11(2002).