

(DANRE) usp13 Antibody (Center)
Purified Rabbit Polyclonal Antibody (Pab)
Catalog # AW5428

Specification

(DANRE) usp13 Antibody (Center) - Product Information

Application	WB,E
Primary Accession	F1QFS9
Other Accession	Q5BKP2 , Q92995 , E1BY77 , E1BMF7
Reactivity	Zebrafish
Predicted	Bovine, Chicken, Human, Mouse
Host	Rabbit
Clonality	Polyclonal
Calculated MW	Z=97; H=97; M=98 KDa
Isotype	Rabbit IgG
Antigen Source	HUMAN

(DANRE) usp13 Antibody (Center) - Additional Information

Gene ID 558011

Antigen Region
387-420

Other Names

Ubiquitin carboxyl-terminal hydrolase 13, Deubiquitinating enzyme 13, Ubiquitin thioesterase 13, Ubiquitin-specific-processing protease 13, usp13

Dilution

WB~~1:1000

Target/Specificity

This DANRE usp13 antibody is generated from a rabbit immunized with a KLH conjugated synthetic peptide between 387-420 amino acids from the Central region of DANRE usp13.

Format

Purified polyclonal antibody supplied in PBS with 0.09% (W/V) sodium azide. This antibody is purified through a protein A column, followed by peptide affinity purification.

Storage

Maintain refrigerated at 2-8°C for up to 2 weeks. For long term storage store at -20°C in small aliquots to prevent freeze-thaw cycles.

Precautions

(DANRE) usp13 Antibody (Center) is for research use only and not for use in diagnostic or therapeutic procedures.

(DANRE) usp13 Antibody (Center) - Protein Information

Name usp13

Function

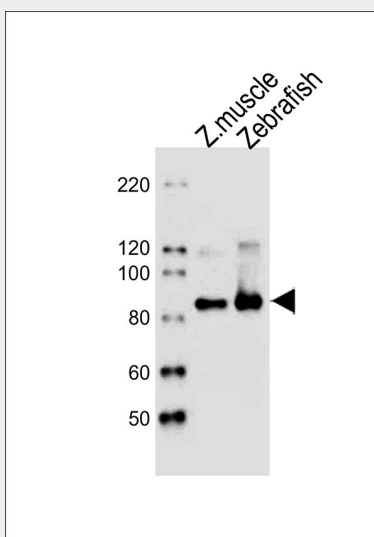
Deubiquitinase that mediates deubiquitination of target proteins and is involved in various processes such as autophagy and endoplasmic reticulum-associated degradation (ERAD).

(DANRE) usp13 Antibody (Center) - Protocols

Provided below are standard protocols that you may find useful for product applications.

- [Western Blot](#)
- [Blocking Peptides](#)
- [Dot Blot](#)
- [Immunohistochemistry](#)
- [Immunofluorescence](#)
- [Immunoprecipitation](#)
- [Flow Cytometry](#)
- [Cell Culture](#)

(DANRE) usp13 Antibody (Center) - Images



All lanes : Anti-usp13 Antibody (Center) at 1:1000 dilution Lane 1: Zebrafish muscle lysates Lane 2: Zebrafish lysates Lysates/proteins at 20 µg per lane. Secondary Goat Anti-Rabbit IgG, (H+L), Peroxidase conjugated at 1/10000 dilution Predicted band size : 97 kDa Blocking/Dilution buffer: 5% NFDM/TBST.

(DANRE) usp13 Antibody (Center) - Background

Deubiquitinase that mediates deubiquitination of target proteins and is involved in various processes such as autophagy and endoplasmic reticulum-associated degradation (ERAD) (By similarity).

(DANRE) usp13 Antibody (Center) - References

Howe K., et al. Nature 496:498-503(2013).