

(Mouse) Msi1 Antibody (Center)
Purified Rabbit Polyclonal Antibody (Pab)
Catalog # AW5419

Specification

(Mouse) Msi1 Antibody (Center) - Product Information

Application	WB,E
Primary Accession	O61474
Other Accession	O8K3P4 , O43347
Reactivity	Human, Mouse
Predicted	Rat
Host	Rabbit
Clonality	Polyclonal
Calculated MW	M=39, 34;H=39;R=39 KDa
Isotype	Rabbit IgG
Antigen Source	HUMAN

(Mouse) Msi1 Antibody (Center) - Additional Information

Gene ID 17690

Antigen Region
81-113

Other Names
RNA-binding protein Musashi homolog 1, Musashi-1, Msi1, Msi1h

Dilution
WB~~1:1000

Target/Specificity
This mouse Msi1 antibody is generated from a rabbit immunized with a KLH conjugated synthetic peptide between 81-113 amino acids from the Central region of mouse Msi1.

Format
Purified polyclonal antibody supplied in PBS with 0.09% (W/V) sodium azide. This antibody is purified through a protein A column, followed by peptide affinity purification.

Storage
Maintain refrigerated at 2-8°C for up to 2 weeks. For long term storage store at -20°C in small aliquots to prevent freeze-thaw cycles.

Precautions
(Mouse) Msi1 Antibody (Center) is for research use only and not for use in diagnostic or therapeutic procedures.

(Mouse) Msi1 Antibody (Center) - Protein Information

Name Msi1

Synonyms Msi1h

Function

RNA binding protein that regulates the expression of target mRNAs at the translation level. Regulates expression of the NOTCH1 antagonist NUMB. Binds RNA containing the sequence 5'-GUUAGUUAGUUAGUU- 3' and other sequences containing the pattern 5'-[GA]U(1-3)AGU-3'. May play a role in the proliferation and maintenance of stem cells in the central nervous system.

Cellular Location

Cytoplasm. Nucleus

Tissue Location

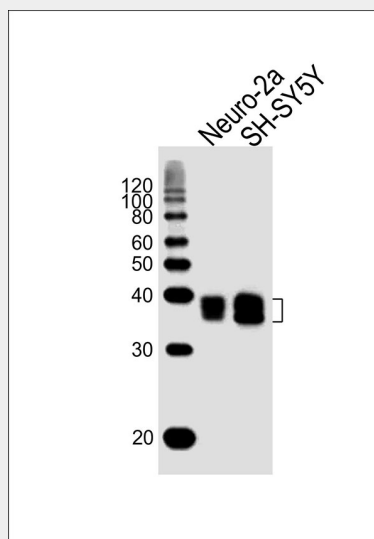
Expressed in neural stem and progenitor cells (at protein level) (PubMed:16554442). Detected in olfactory bulb, brain stem, small intestine, and at low levels in brain cortex, hippocampus and ovary (PubMed:8660864). Detected in neural progenitor cells, including neural stem cells (PubMed:8660864)

(Mouse) Msi1 Antibody (Center) - Protocols

Provided below are standard protocols that you may find useful for product applications.

- [Western Blot](#)
- [Blocking Peptides](#)
- [Dot Blot](#)
- [Immunohistochemistry](#)
- [Immunofluorescence](#)
- [Immunoprecipitation](#)
- [Flow Cytometry](#)
- [Cell Culture](#)

(Mouse) Msi1 Antibody (Center) - Images



All lanes : Anti-Msi1 Antibody (Center) at 1:1000 dilution Lane 1: Neuro-2a whole cell lysates Lane 2: SH-SY5Y whole cell lysates Lysates/proteins at 20 µg per lane. Secondary Goat Anti-Rabbit IgG, (H+L), Peroxidase conjugated at 1/10000 dilution Predicted band size : 39 kDa Blocking/Dilution

buffer: 5% NFDm/TBST.

(Mouse) Msi1 Antibody (Center) - Background

RNA binding protein that regulates the expression of target mRNAs at the translation level. Regulates expression of the NOTCH1 antagonist NUMB. Binds RNA containing the sequence 5'- GUUAGUUAGUUAGUU-3' and other sequences containing the pattern 5'- [GA]U(1-3)AGU-3'. May play a role in the proliferation and maintenance of stem cells in the central nervous system.

(Mouse) Msi1 Antibody (Center) - References

Sakakibara S., et al. Dev. Biol. 176:230-242(1996).
Carninci P., et al. Science 309:1559-1563(2005).
Imai T., et al. Mol. Cell. Biol. 21:3888-3900(2001).
Sakakibara S., et al. Proc. Natl. Acad. Sci. U.S.A. 99:15194-15199(2002).
Nagata T., et al. J. Mol. Biol. 287:315-330(1999).