

PCGF1 Antibody (Center)
Purified Rabbit Polyclonal Antibody (Pab)
Catalog # AW5417

Specification

PCGF1 Antibody (Center) - Product Information

Application	WB,E
Primary Accession	O9BSM1
Other Accession	O8R023 , O2YDF9
Reactivity	Human, Mouse, Rat
Host	Rabbit
Clonality	Polyclonal
Calculated MW	H=30,21;M=30;R=29 KDa
Isotype	Rabbit IgG
Antigen Source	HUMAN

PCGF1 Antibody (Center) - Additional Information

Gene ID 84759

Antigen Region
117-151

Other Names

Polycomb group RING finger protein 1, Nervous system Polycomb-1, NSPc1, RING finger protein 68, PCGF1, NSPC1, RNF68

Dilution

WB~~1:1000

Target/Specificity

This PCGF1 antibody is generated from a rabbit immunized with a KLH conjugated synthetic peptide between 117-151 amino acids from the Central region of human PCGF1.

Format

Purified polyclonal antibody supplied in PBS with 0.09% (W/V) sodium azide. This antibody is purified through a protein A column, followed by peptide affinity purification.

Storage

Maintain refrigerated at 2-8°C for up to 2 weeks. For long term storage store at -20°C in small aliquots to prevent freeze-thaw cycles.

Precautions

PCGF1 Antibody (Center) is for research use only and not for use in diagnostic or therapeutic procedures.

PCGF1 Antibody (Center) - Protein Information

Name PCGF1

Synonyms NSPC1, RNF68

Function

Component of the Polycomb group (PcG) multiprotein BCOR complex, a complex required to maintain the transcriptionally repressive state of some genes, such as BCL6 and the cyclin-dependent kinase inhibitor, CDKN1A. Transcriptional repressor that may be targeted to the DNA by BCL6; this transcription repressor activity may be related to PKC signaling pathway. Represses CDKN1A expression by binding to its promoter, and this repression is dependent on the retinoic acid response element (RARE element). Promotes cell cycle progression and enhances cell proliferation as well. May have a positive role in tumor cell growth by down-regulating CDKN1A. Component of a Polycomb group (PcG) multiprotein PRC1-like complex, a complex class required to maintain the transcriptionally repressive state of many genes, including Hox genes, throughout development. PcG PRC1 complex acts via chromatin remodeling and modification of histones; it mediates monoubiquitination of histone H2A 'Lys-119', rendering chromatin heritably changed in its expressibility (PubMed:26151332). Within the PRC1-like complex, regulates RNF2 ubiquitin ligase activity (PubMed:26151332). Regulates the expression of DPPA4 and NANOG in the NT2 embryonic carcinoma cells (PubMed:26687479).

Cellular Location

Nucleus

Tissue Location

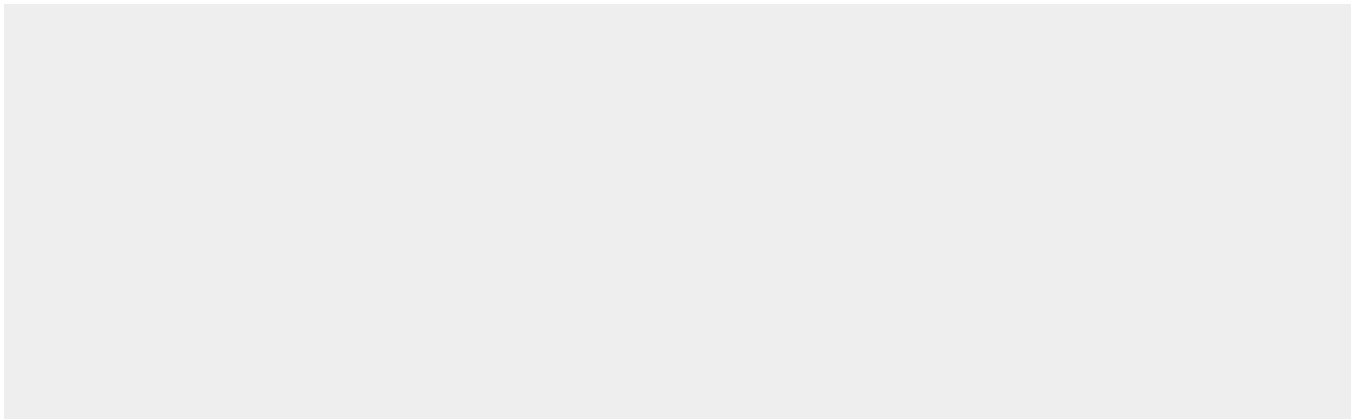
Ubiquitous..

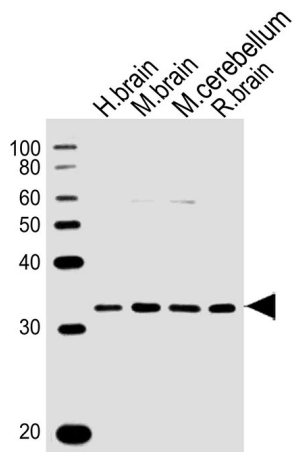
PCGF1 Antibody (Center) - Protocols

Provided below are standard protocols that you may find useful for product applications.

- [Western Blot](#)
- [Blocking Peptides](#)
- [Dot Blot](#)
- [Immunohistochemistry](#)
- [Immunofluorescence](#)
- [Immunoprecipitation](#)
- [Flow Cytometry](#)
- [Cell Culture](#)

PCGF1 Antibody (Center) - Images





All lanes : Anti-PCGF1 Antibody (Center) at 1:1000 dilution Lane 1: human brain lysates Lane 2: mouse brain lysates Lane 3: mouse cerebellum lysates Lane 4: rat brain lysates Lysates/proteins at 20 µg per lane. Secondary Goat Anti-Rabbit IgG, (H+L), Peroxidase conjugated at 1/10000 dilution Predicted band size : 30 kDa Blocking/Dilution buffer: 5% NFDN/TBST.

PCGF1 Antibody (Center) - Background

Component of the Polycomb group (PcG) multiprotein BCOR complex, a complex required to maintain the transcriptionally repressive state of some genes, such as BCL6 and the cyclin-dependent kinase inhibitor, CDKN1A. Transcriptional repressor that may be targeted to the DNA by BCL6; this transcription repressor activity may be related to PKC signaling pathway. Represses CDKN1A expression by binding to its promoter, and this repression is dependent on the retinoic acid response element (RARE element). Promotes cell cycle progression and enhances cell proliferation as well. May have a positive role in tumor cell growth by down-regulating CDKN1A. Component of a Polycomb group (PcG) multiprotein PRC1-like complex, a complex class required to maintain the transcriptionally repressive state of many genes, including Hox genes, throughout development. PcG PRC1 complex acts via chromatin remodeling and modification of histones; it mediates monoubiquitination of histone H2A 'Lys-119', rendering chromatin heritably changed in its expressibility.

PCGF1 Antibody (Center) - References

- Ding J.B.,et al.Submitted (JUL-2003) to the EMBL/GenBank/DDBJ databases.
- Hillier L.W.,et al.Nature 434:724-731(2005).
- Nunes M.,et al.Mech. Dev. 102:219-222(2001).
- Gong Y.,et al.FEBS Lett. 579:115-121(2005).
- Gearhart M.D.,et al.Mol. Cell. Biol. 26:6880-6889(2006).