

**INSRR Antibody (Center)**  
**Purified Rabbit Polyclonal Antibody (Pab)**  
**Catalog # AW5413**

**Specification**

---

**INSRR Antibody (Center) - Product Information**

Application	<b>WB, IHC-P,E</b>
Primary Accession	<a href="#">P14616</a>
Reactivity	<b>Human</b>
Host	<b>Rabbit</b>
Clonality	<b>Polyclonal</b>
Calculated MW	<b>H=144 KDa</b>
Isotype	<b>Rabbit IgG</b>
Antigen Source	<b>HUMAN</b>

**INSRR Antibody (Center) - Additional Information**

**Gene ID** 3645

**Antigen Region**  
668-702

**Other Names**

Insulin receptor-related protein, IRR, IR-related receptor, Insulin receptor-related protein alpha chain, Insulin receptor-related protein beta chain, INSRR, IRR

**Dilution**

WB~~1:1000  
IHC-P~~1:25

**Target/Specificity**

This INSRR antibody is generated from a rabbit immunized with a KLH conjugated synthetic peptide between 668-702 amino acids from the Central region of human INSRR.

**Format**

Purified polyclonal antibody supplied in PBS with 0.09% (W/V) sodium azide. This antibody is purified through a protein A column, followed by peptide affinity purification.

**Storage**

Maintain refrigerated at 2-8°C for up to 2 weeks. For long term storage store at -20°C in small aliquots to prevent freeze-thaw cycles.

**Precautions**

INSRR Antibody (Center) is for research use only and not for use in diagnostic or therapeutic procedures.

**INSRR Antibody (Center) - Protein Information**

**Name** INSRR

**Synonyms** IRR

**Function**

Receptor with tyrosine-protein kinase activity. Functions as a pH sensing receptor which is activated by increased extracellular pH. Activates an intracellular signaling pathway that involves IRS1 and AKT1/PKB.

**Cellular Location**

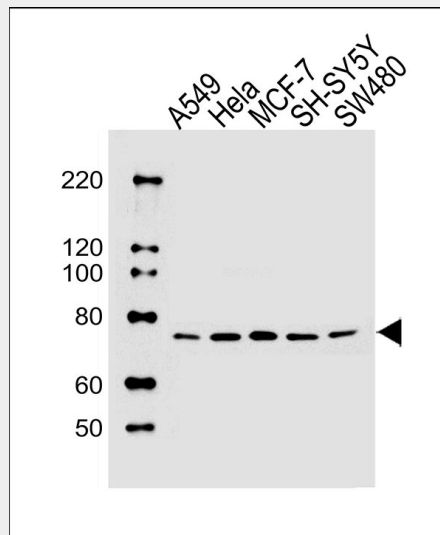
Membrane; Single-pass type I membrane protein.

**INSRR Antibody (Center) - Protocols**

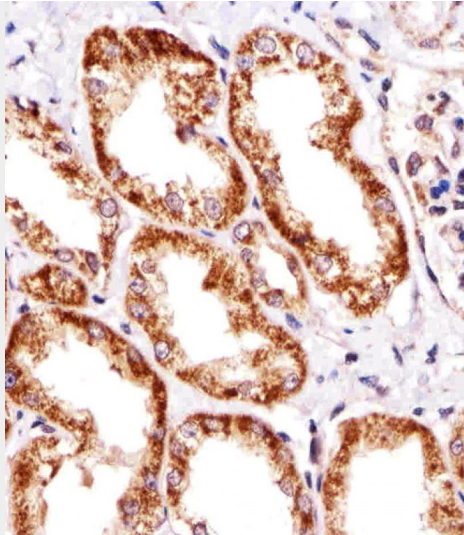
Provided below are standard protocols that you may find useful for product applications.

- [Western Blot](#)
- [Blocking Peptides](#)
- [Dot Blot](#)
- [Immunohistochemistry](#)
- [Immunofluorescence](#)
- [Immunoprecipitation](#)
- [Flow Cytometry](#)
- [Cell Culture](#)

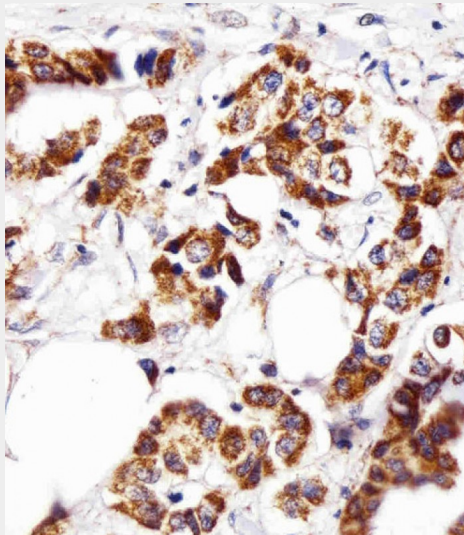
**INSRR Antibody (Center) - Images**



All lanes : Anti-INSRR Antibody (Center) at 1:1000 dilution Lane 1: A549 whole cell lysates Lane 2: HeLa whole cell lysates Lane 3: MCF-7 whole cell lysates Lane 4: SH-SY5Y whole cell lysates Lane 5: SW480 whole cell lysates Lysates/proteins at 20 µg per lane. Secondary Goat Anti-Rabbit IgG, (H+L), Peroxidase conjugated at 1/10000 dilution Predicted band size : 144 kDa Blocking/Dilution buffer: 5% NFDM/TBST.



Immunohistochemical analysis of paraffin-embedded H. kidney section using INSRR Antibody (Center)(Cat#AW5413). AW5413 was diluted at 1:25 dilution. A undiluted biotinylated goat polyvalent antibody was used as the secondary, followed by DAB staining.



Immunohistochemical analysis of paraffin-embedded H. breast carcinoma section using INSRR Antibody (Center)(Cat#AW5413). AW5413 was diluted at 1:25 dilution. A undiluted biotinylated goat polyvalent antibody was used as the secondary, followed by DAB staining.

### **INSRR Antibody (Center) - Background**

Receptor with tyrosine-protein kinase activity. Functions as a pH sensing receptor which is activated by increased extracellular pH. Activates an intracellular signaling pathway that involves IRS1 and AKT1/PKB.

### **INSRR Antibody (Center) - References**

- Haenze J.,et al.Horm. Metab. Res. 31:77-79(1999).
- Gregory S.G.,et al.Nature 441:315-321(2006).
- Mural R.J.,et al.Submitted (SEP-2005) to the EMBL/GenBank/DDBJ databases.
- Shier P.,et al.J. Biol. Chem. 264:14605-14608(1989).
- Greenman C.,et al.Nature 446:153-158(2007).