

NCAM1 Antibody (C-term)
Purified Rabbit Polyclonal Antibody (Pab)
Catalog # AW5412

Specification

NCAM1 Antibody (C-term) - Product Information

| | |
|-------------------|---|
| Application | WB, IHC-P, FC,E |
| Primary Accession | P13591 |
| Other Accession | P13596 , P13595 , P13590 , P31836 |
| Reactivity | Human, Rat |
| Predicted | Bovine, Chicken, Mouse |
| Host | Rabbit |
| Clonality | Polyclonal |
| Calculated MW | H=95,93;M=119,94;R=95 KDa |
| Isotype | Rabbit IgG |
| Antigen Source | HUMAN |

NCAM1 Antibody (C-term) - Additional Information

Gene ID 4684

Antigen Region
796-830

Other Names
Neural cell adhesion molecule 1, N-CAM-1, NCAM-1, CD56, NCAM1, NCAM

Dilution
WB~~1:1000
IHC-P~~1:25
FC~~1:25

Target/Specificity
This NCAM1 antibody is generated from a rabbit immunized with a KLH conjugated synthetic peptide between 796-830 amino acids from the C-terminal region of human NCAM1.

Format
Purified polyclonal antibody supplied in PBS with 0.09% (W/V) sodium azide. This antibody is purified through a protein A column, followed by peptide affinity purification.

Storage
Maintain refrigerated at 2-8°C for up to 2 weeks. For long term storage store at -20°C in small aliquots to prevent freeze-thaw cycles.

Precautions
NCAM1 Antibody (C-term) is for research use only and not for use in diagnostic or therapeutic procedures.

NCAM1 Antibody (C-term) - Protein Information

Name NCAM1 ([HGNC:7656](#))

Synonyms NCAM

Function

This protein is a cell adhesion molecule involved in neuron- neuron adhesion, neurite fasciculation, outgrowth of neurites, etc. (Microbial infection) Acts as a receptor for Zika virus.

Cellular Location

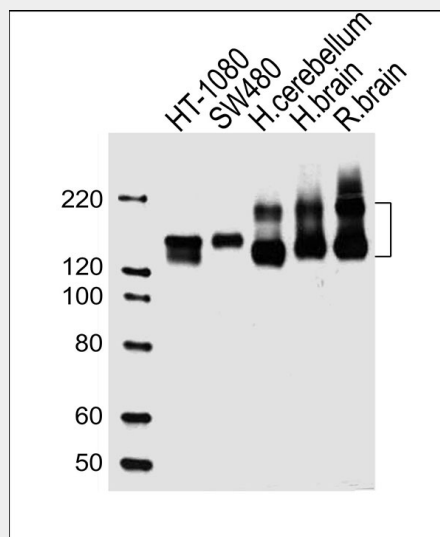
[Isoform 1]: Cell membrane; Single-pass type I membrane protein [Isoform 3]: Cell membrane; Lipid-anchor, GPI- anchor [Isoform 5]: Secreted.

NCAM1 Antibody (C-term) - Protocols

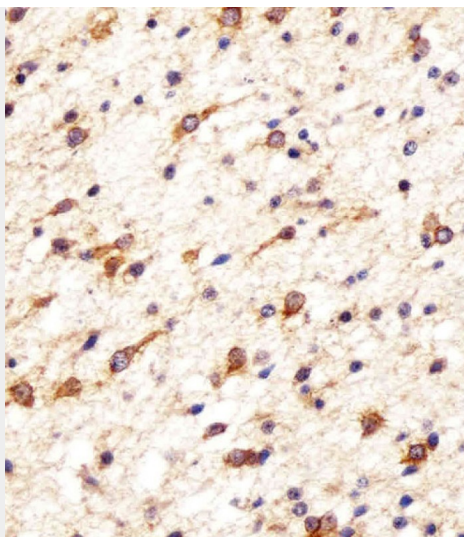
Provided below are standard protocols that you may find useful for product applications.

- [Western Blot](#)
- [Blocking Peptides](#)
- [Dot Blot](#)
- [Immunohistochemistry](#)
- [Immunofluorescence](#)
- [Immunoprecipitation](#)
- [Flow Cytometry](#)
- [Cell Culture](#)

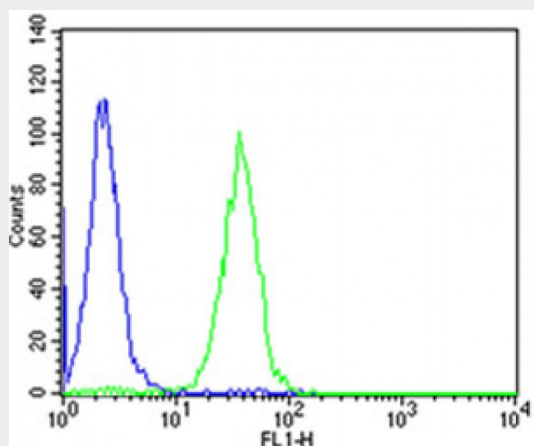
NCAM1 Antibody (C-term) - Images



All lanes : Anti-NCAM1 Antibody (C-term) at 1:1000 dilution Lane 1: HT-1080 whole cell lysates Lane 2: SW480 whole cell lysates Lane 3: human cerebellum lysates Lane 4: human brain lysates Lane 5: rat brain lysates Lysates/proteins at 20 µg per lane. Secondary Goat Anti-Rabbit IgG, (H+L), Peroxidase conjugated at 1/10000 dilution Predicted band size : 95 kDa Blocking/Dilution buffer: 5% NFD/MTBST.



Immunohistochemical analysis of paraffin-embedded H. astroglioma section using NCAM1 Antibody (C-term)(Cat#AW5412). AW5412 was diluted at 1:25 dilution. A undiluted biotinylated goat polyvalent antibody was used as the secondary, followed by DAB staining.



Flow cytometric analysis of SH-SY5Y cells using NCAM1 Antibody (C-term)(green, Cat#AW5412) compared to an isotype control of rabbit IgG(blue). AW5412 was diluted at 1:25 dilution. An Alexa Fluor® 488 goat anti-rabbit IgG at 1:400 dilution was used as the secondary antibody.

NCAM1 Antibody (C-term) - Background

This protein is a cell adhesion molecule involved in neuron-neuron adhesion, neurite fasciculation, outgrowth of neurites, etc.

NCAM1 Antibody (C-term) - References

- Barton C.H., et al. *Development* 104:165-173(1988).
- Lanier L.L., et al. *J. Immunol.* 146:4421-4426(1991).
- Saito S., et al. *Lung Cancer* 10:307-318(1994).
- Ota T., et al. *Nat. Genet.* 36:40-45(2004).
- Totoki Y., et al. Submitted (MAR-2005) to the EMBL/GenBank/DDBJ databases.