

STX1B Antibody (Center)
Purified Rabbit Polyclonal Antibody (Pab)
Catalog # AW5406

Specification

STX1B Antibody (Center) - Product Information

Application	WB,E
Primary Accession	P61266
Other Accession	P61265 , P61264 , P61267 , P61268
Reactivity	Human, Mouse
Predicted	Bovine, Rat, Sheep
Host	Rabbit
Clonality	Polyclonal
Calculated MW	H=33,32;M=33;R=33 KDa
Isotype	Rabbit IgG
Antigen Source	HUMAN

STX1B Antibody (Center) - Additional Information

Gene ID 112755

Antigen Region
170-203

Other Names
Syntaxin-1B, Syntaxin-1B1, Syntaxin-1B2, STX1B, STX1B1, STX1B2

Dilution
WB~~1:1000

Target/Specificity
This STX1B antibody is generated from a rabbit immunized with a KLH conjugated synthetic peptide between 170-203 amino acids from the Central region of human STX1B.

Format
Purified polyclonal antibody supplied in PBS with 0.09% (W/V) sodium azide. This antibody is purified through a protein A column, followed by peptide affinity purification.

Storage
Maintain refrigerated at 2-8°C for up to 2 weeks. For long term storage store at -20°C in small aliquots to prevent freeze-thaw cycles.

Precautions
STX1B Antibody (Center) is for research use only and not for use in diagnostic or therapeutic procedures.

STX1B Antibody (Center) - Protein Information

Name STX1B

Synonyms STX1B1, STX1B2

Function

Potentially involved in docking of synaptic vesicles at presynaptic active zones. May mediate Ca(2+)-regulation of exocytosis acrosomal reaction in sperm (By similarity).

Cellular Location

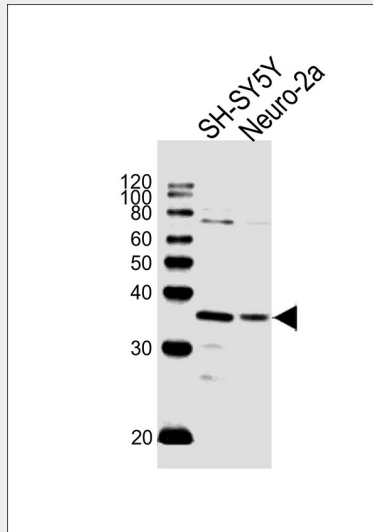
[Isoform 1]: Membrane; Single-pass type IV membrane protein

STX1B Antibody (Center) - Protocols

Provided below are standard protocols that you may find useful for product applications.

- [Western Blot](#)
- [Blocking Peptides](#)
- [Dot Blot](#)
- [Immunohistochemistry](#)
- [Immunofluorescence](#)
- [Immunoprecipitation](#)
- [Flow Cytometry](#)
- [Cell Culture](#)

STX1B Antibody (Center) - Images



All lanes : Anti-STX1B Antibody (Center) at 1:1000 dilution Lane 1: SH-SY5Y whole cell lysates Lane 2: Neuro-2a whole cell lysates Lysates/proteins at 20 µg per lane. Secondary Goat Anti-Rabbit IgG, (H+L), Peroxidase conjugated at 1/10000 dilution Predicted band size : 33 kDa Blocking/Dilution buffer: 5% NFDM/TBST.

STX1B Antibody (Center) - Background

Potentially involved in docking of synaptic vesicles at presynaptic active zones. May mediate Ca(2+)-regulation of exocytosis acrosomal reaction in sperm (By similarity).

STX1B Antibody (Center) - References

Pereira S.,et al.Gene 423:160-171(2008).
Fujiwara T.,et al.Submitted (AUG-1994) to the EMBL/GenBank/DDBJ databases.
Gastaldi M.,et al.Submitted (MAR-2001) to the EMBL/GenBank/DDBJ databases.
Martin J.,et al.Nature 432:988-994(2004).
Rigbolt K.T.,et al.Sci. Signal. 4:RS3-RS3(2011).