

**SEMA4F Antibody (C-term)**  
**Purified Rabbit Polyclonal Antibody (Pab)**  
**Catalog # AW5403**

**Specification**

---

**SEMA4F Antibody (C-term) - Product Information**

Application	WB,E
Primary Accession	<a href="#">O95754</a>
Other Accession	<a href="#">O9Z143</a> , <a href="#">O9Z123</a>
Reactivity	Human, Rat
Predicted	Mouse
Host	Rabbit
Clonality	Polyclonal
Calculated MW	H=84,66;M=84;R=84 KDa
Isotype	Rabbit IgG
Antigen Source	HUMAN

**SEMA4F Antibody (C-term) - Additional Information**

**Gene ID** 10505

**Antigen Region**  
695-709

**Other Names**  
Semaphorin-4F, Semaphorin-M, Sema M, Semaphorin-W, Sema W, SEMA4F, SEMAM, SEMAW

**Dilution**  
WB~~1:1000

**Target/Specificity**  
This SEMA4F antibody is generated from a rabbit immunized with a KLH conjugated synthetic peptide between 695-709 amino acids from the C-terminal region of human SEMA4F.

**Format**  
Purified polyclonal antibody supplied in PBS with 0.09% (W/V) sodium azide. This antibody is purified through a protein A column, followed by peptide affinity purification.

**Storage**  
Maintain refrigerated at 2-8°C for up to 2 weeks. For long term storage store at -20°C in small aliquots to prevent freeze-thaw cycles.

**Precautions**  
SEMA4F Antibody (C-term) is for research use only and not for use in diagnostic or therapeutic procedures.

**SEMA4F Antibody (C-term) - Protein Information**

**Name** SEMA4F

**Synonyms** SEMAM, SEMAW

**Function**

Probable cell surface receptor that regulates oligodendroglial precursor cell migration (By similarity). Might also regulate differentiation of oligodendroglial precursor cells (By similarity). Has growth cone collapse activity against retinal ganglion-cell axons (By similarity).

**Cellular Location**

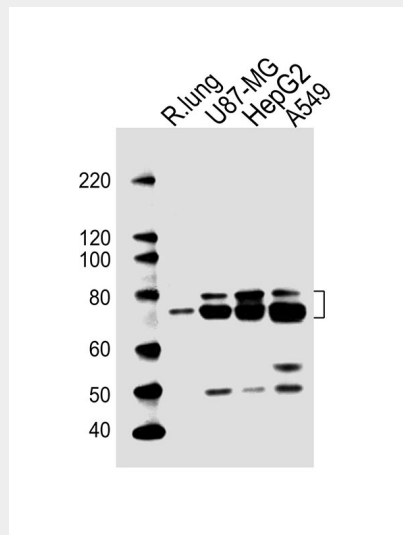
Cell membrane; Single-pass type I membrane protein. Postsynaptic density {ECO:0000250|UniProtKB:Q9Z143}. Perikaryon {ECO:0000250|UniProtKB:Q9Z123}. Cell projection, dendrite {ECO:0000250|UniProtKB:Q9Z123}. Note=Colocalizes with DLG4 at synapses {ECO:0000250|UniProtKB:Q9Z123}

**SEMA4F Antibody (C-term) - Protocols**

Provided below are standard protocols that you may find useful for product applications.

- [Western Blot](#)
- [Blocking Peptides](#)
- [Dot Blot](#)
- [Immunohistochemistry](#)
- [Immunofluorescence](#)
- [Immunoprecipitation](#)
- [Flow Cytometry](#)
- [Cell Culture](#)

**SEMA4F Antibody (C-term) - Images**



All lanes : Anti-SEMA4F Antibody (C-term) at 1:1000 dilution Lane 1: rat lung lysates Lane 2: U87-MG whole cell lysates Lane 3: HepG2 whole cell lysates Lane 4: A549 whole cell lysates Lysates/proteins at 20 µg per lane. Secondary Goat Anti-Rabbit IgG, (H+L), Peroxidase conjugated at 1/10000 dilution Predicted band size : 84 kDa Blocking/Dilution buffer: 5% NFDN/TBST.

**SEMA4F Antibody (C-term) - Background**

Has growth cone collapse activity against retinal ganglion-cell axons (By similarity).

**SEMA4F Antibody (C-term) - References**

Encinas J.A.,et al.Proc. Natl. Acad. Sci. U.S.A. 96:2491-2496(1999).

Wiemann S.,et al.Genome Res. 11:422-435(2001).

Otsuki T.,et al.DNA Res. 12:117-126(2005).

Hillier L.W.,et al.Nature 434:724-731(2005).

Jang W.,et al.Submitted (MAR-1998) to the EMBL/GenBank/DDBJ databases.