

**EIF4G2 Antibody (N-term)**  
**Purified Rabbit Polyclonal Antibody (Pab)**  
**Catalog # AW5402****Specification**

---

**EIF4G2 Antibody (N-term) - Product Information**

Application	WB,E
Primary Accession	<a href="#">P78344</a>
Other Accession	<a href="#">P79398</a> , <a href="#">Q62448</a> , <a href="#">Q95L46</a>
Reactivity	Human
Predicted	Bovine, Mouse, Rabbit
Host	Rabbit
Clonality	Polyclonal
Calculated MW	H=102,98;M=102,98;R=102 KDa
Isotype	Rabbit IgG
Antigen Source	HUMAN

**EIF4G2 Antibody (N-term) - Additional Information****Gene ID** 1982**Antigen Region**

12-44

**Other Names**

Eukaryotic translation initiation factor 4 gamma 2, eIF-4-gamma 2, eIF-4G 2, eIF4G 2, Death-associated protein 5, DAP-5, p97, EIF4G2 (<a href="http://www.genenames.org/cgi-bin/gene\_symbol\_report?hgnc\_id=3297" target="\_blank">HGNC:3297</a>)

**Dilution**

WB~~1:1000

**Target/Specificity**

This EIF4G2 antibody is generated from a rabbit immunized with a KLH conjugated synthetic peptide between 12-44 amino acids from the N-terminal region of human EIF4G2.

**Format**

Purified polyclonal antibody supplied in PBS with 0.09% (W/V) sodium azide. This antibody is purified through a protein A column, followed by peptide affinity purification.

**Storage**

Maintain refrigerated at 2-8°C for up to 2 weeks. For long term storage store at -20°C in small aliquots to prevent freeze-thaw cycles.

**Precautions**

EIF4G2 Antibody (N-term) is for research use only and not for use in diagnostic or therapeutic procedures.

## EIF4G2 Antibody (N-term) - Protein Information

Name EIF4G2 ([HGNC:3297](#))

### Function

Appears to play a role in the switch from cap-dependent to IRES-mediated translation during mitosis, apoptosis and viral infection. Cleaved by some caspases and viral proteases.

### Tissue Location

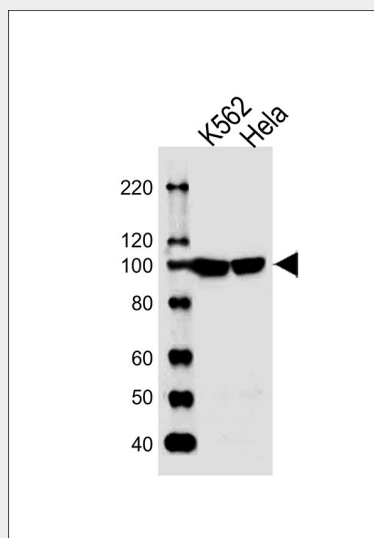
Ubiquitously expressed in all adult tissues examined, with high levels in skeletal muscle and heart. Also expressed in fetal brain, lung, liver and kidney.

## EIF4G2 Antibody (N-term) - Protocols

Provided below are standard protocols that you may find useful for product applications.

- [Western Blot](#)
- [Blocking Peptides](#)
- [Dot Blot](#)
- [Immunohistochemistry](#)
- [Immunofluorescence](#)
- [Immunoprecipitation](#)
- [Flow Cytometry](#)
- [Cell Culture](#)

## EIF4G2 Antibody (N-term) - Images



All lanes : Anti-EIF4G2 Antibody (N-term) at 1:1000 dilution Lane 1: K562 whole cell lysates Lane 2: HeLa whole cell lysates Lysates/proteins at 20 µg per lane. Secondary Goat Anti-Rabbit IgG, (H+L), Peroxidase conjugated at 1/10000 dilution Predicted band size : 102 kDa Blocking/Dilution buffer: 5% NFDM/TBST.

## EIF4G2 Antibody (N-term) - Background

Appears to play a role in the switch from cap-dependent to IRES-mediated translation during mitosis, apoptosis and viral infection. Cleaved by some caspases and viral proteases.

**EIF4G2 Antibody (N-term) - References**

Imataka H.,et al.EMBO J. 16:817-825(1997).

Yamanaka S.,et al.Genes Dev. 11:321-333(1997).

Levy-Strumpf N.,et al.Mol. Cell. Biol. 17:1615-1625(1997).

Totoki Y.,et al.Submitted (APR-2005) to the EMBL/GenBank/DDBJ databases.

Taylor T.D.,et al.Nature 440:497-500(2006).