

MP68 Antibody (C-term)
Purified Rabbit Polyclonal Antibody (Pab)
Catalog # AW5384

Specification

MP68 Antibody (C-term) - Product Information

Application	WB,E
Primary Accession	P56378
Reactivity	Human
Predicted	Mouse
Host	Rabbit
Clonality	Polyclonal
Calculated MW	H=7,9;M=7 KDa
Isotype	Rabbit IgG
Antigen Source	HUMAN

MP68 Antibody (C-term) - Additional Information

Gene ID 9556

Antigen Region
44-78

Other Names
68 kDa mitochondrial proteolipid, MP68, C14orf2

Dilution
WB~~1:1000

Target/Specificity
This MP68 antibody is generated from a rabbit immunized with a KLH conjugated synthetic peptide between 44-78 amino acids from the C-terminal region of human MP68.

Format
Purified polyclonal antibody supplied in PBS with 0.09% (W/V) sodium azide. This antibody is purified through a protein A column, followed by peptide affinity purification.

Storage
Maintain refrigerated at 2-8°C for up to 2 weeks. For long term storage store at -20°C in small aliquots to prevent freeze-thaw cycles.

Precautions
MP68 Antibody (C-term) is for research use only and not for use in diagnostic or therapeutic procedures.

MP68 Antibody (C-term) - Protein Information

Name ATP5MJ ([HGNC:1188](#))

Synonyms ATP5MPL, C14orf2, MP68

Function

Mitochondrial membrane ATP synthase (F(1)F(0) ATP synthase or Complex V) produces ATP from ADP in the presence of a proton gradient across the membrane which is generated by electron transport complexes of the respiratory chain. F-type ATPases consist of two structural domains, F(1) - containing the extramembraneous catalytic core and F(0) - containing the membrane proton channel, linked together by a central stalk and a peripheral stalk. During catalysis, ATP synthesis in the catalytic domain of F(1) is coupled via a rotary mechanism of the central stalk subunits to proton translocation (Probable). Minor subunit required to maintain the ATP synthase population in the mitochondria (PubMed:24330338).

Cellular Location

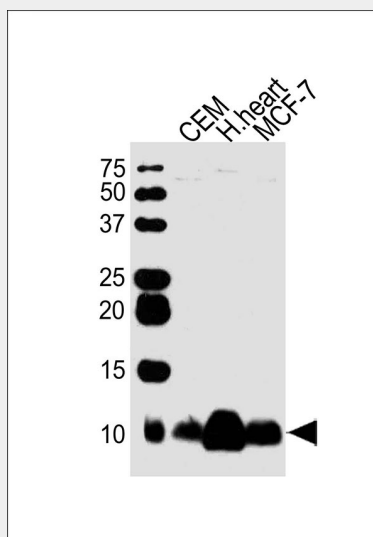
Mitochondrion membrane; Single-pass membrane protein

MP68 Antibody (C-term) - Protocols

Provided below are standard protocols that you may find useful for product applications.

- [Western Blot](#)
- [Blocking Peptides](#)
- [Dot Blot](#)
- [Immunohistochemistry](#)
- [Immunofluorescence](#)
- [Immunoprecipitation](#)
- [Flow Cytometry](#)
- [Cell Culture](#)

MP68 Antibody (C-term) - Images



All lanes : Anti-MP68 Antibody (C-term) at 1:1000 dilution Lane 1: CEM whole cell lysates Lane 2: human heart lysates Lane 3: MCF-7 whole cell lysates Lysates/proteins at 20 µg per lane. Secondary Goat Anti-Rabbit IgG, (H+L), Peroxidase conjugated at 1/10000 dilution Predicted band size : 7 kDa Blocking/Dilution buffer: 5% NFDm/TBST.

MP68 Antibody (C-term) - References

Mao M.,et al.Proc. Natl. Acad. Sci. U.S.A. 95:8175-8180(1998).
Zhang C.,et al.Submitted (DEC-1998) to the EMBL/GenBank/DDBJ databases.
Li W.B.,et al.Submitted (JAN-2003) to the EMBL/GenBank/DDBJ databases.
Ota T.,et al.Nat. Genet. 36:40-45(2004).
Heilig R.,et al.Nature 421:601-607(2003).