

**ACTN2 Antibody (Center)**  
**Purified Rabbit Polyclonal Antibody (Pab)**  
**Catalog # AW5383**

**Specification**

---

**ACTN2 Antibody (Center) - Product Information**

|                   |  |
|-------------------|--|
| Application       | WB,E   |
| Primary Accession | <a href="#">P35609</a>   |
| Other Accession   | <a href="#">O9JI91</a> , <a href="#">P20111</a> , <a href="#">O3ZC55</a> |
| Reactivity        | Human, Mouse   |
| Host              | Rabbit   |
| Clonality         | Polyclonal   |
| Calculated MW     | H=104;M=104 KDa  |
| Isotype           | Rabbit IgG   |
| Antigen Source    | HUMAN  |

**ACTN2 Antibody (Center) - Additional Information**

**Gene ID** 88

**Antigen Region**  
352-386

**Other Names**

Alpha-actinin-2, Alpha-actinin skeletal muscle isoform 2, F-actin cross-linking protein, ACTN2

**Dilution**

WB~~1:1000

**Target/Specificity**

This ACTN2 antibody is generated from a rabbit immunized with a KLH conjugated synthetic peptide between 352-386 amino acids from the Central region of human ACTN2.

**Format**

Purified polyclonal antibody supplied in PBS with 0.09% (W/V) sodium azide. This antibody is purified through a protein A column, followed by peptide affinity purification.

**Storage**

Maintain refrigerated at 2-8°C for up to 2 weeks. For long term storage store at -20°C in small aliquots to prevent freeze-thaw cycles.

**Precautions**

ACTN2 Antibody (Center) is for research use only and not for use in diagnostic or therapeutic procedures.

**ACTN2 Antibody (Center) - Protein Information**

**Name** ACTN2

### Function

F-actin cross-linking protein which is thought to anchor actin to a variety of intracellular structures. This is a bundling protein.

### Cellular Location

Cytoplasm, myofibril, sarcomere, Z line. Note=Colocalizes with MYOZ1 and FLNC at the Z-lines of skeletal muscle

### Tissue Location

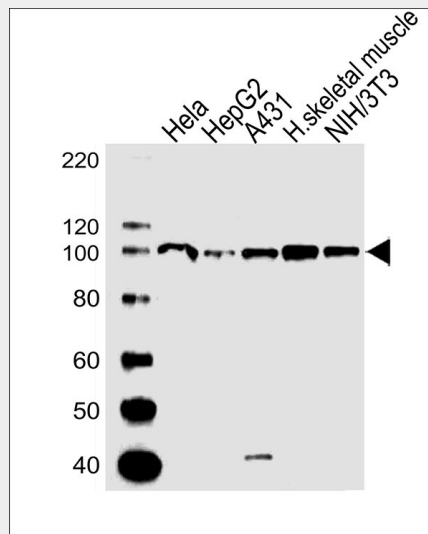
Expressed in both skeletal and cardiac muscle.

## ACTN2 Antibody (Center) - Protocols

Provided below are standard protocols that you may find useful for product applications.

- [Western Blot](#)
- [Blocking Peptides](#)
- [Dot Blot](#)
- [Immunohistochemistry](#)
- [Immunofluorescence](#)
- [Immunoprecipitation](#)
- [Flow Cytometry](#)
- [Cell Culture](#)

## ACTN2 Antibody (Center) - Images



All lanes : Anti-ACTN2 Antibody (Center) at 1:1000 dilution Lane 1: Hela whole cell lysates Lane 2: HepG2 whole cell lysates Lane 3: A431 whole cell lysates Lane 4: human skeletal muscle lysates Lane 5: NIH/3T3 whole cell lysates Lysates/proteins at 20 µg per lane. Secondary Goat Anti-Rabbit IgG, (H+L), Peroxidase conjugated at 1/10000 dilution Predicted band size : 104 kDa Blocking/Dilution buffer: 5% NFD/MTBST.

## ACTN2 Antibody (Center) - Background

F-actin cross-linking protein which is thought to anchor actin to a variety of intracellular structures. This is a bundling protein.

**ACTN2 Antibody (Center) - References**

- Beggs A.H.,et al.J. Biol. Chem. 267:9281-9288(1992).  
Tiso N.,et al.Biochem. Biophys. Res. Commun. 265:256-259(1999).  
Gregory S.G.,et al.Nature 441:315-321(2006).  
Mural R.J.,et al.Submitted (JUL-2005) to the EMBL/GenBank/DDBJ databases.  
Faulkner G.,et al.J. Cell Biol. 146:465-475(1999).