

BRP44L Antibody (C-term)
Purified Rabbit Polyclonal Antibody (Pab)
Catalog # AW5380

Specification

BRP44L Antibody (C-term) - Product Information

Application	WB,E
Primary Accession	O9Y5U8
Reactivity	Human
Host	Rabbit
Clonality	Polyclonal
Calculated MW	H=12 KDa
Isotype	Rabbit IgG
Antigen Source	HUMAN

BRP44L Antibody (C-term) - Additional Information

Gene ID 51660

Antigen Region
96-129

Other Names
Mitochondrial pyruvate carrier 1, Brain protein 44-like protein, MPC1, BRP44L

Dilution
WB~~1:1000

Target/Specificity
This BRP44L antibody is generated from a rabbit immunized with a KLH conjugated synthetic peptide between 96-129 amino acids from the C-terminal region of human BRP44L.

Format
Purified polyclonal antibody supplied in PBS with 0.09% (W/V) sodium azide. This antibody is purified through a protein A column, followed by peptide affinity purification.

Storage
Maintain refrigerated at 2-8°C for up to 2 weeks. For long term storage store at -20°C in small aliquots to prevent freeze-thaw cycles.

Precautions
BRP44L Antibody (C-term) is for research use only and not for use in diagnostic or therapeutic procedures.

BRP44L Antibody (C-term) - Protein Information

Name MPC1

Synonyms BRP44L

Function

Mediates the uptake of pyruvate into mitochondria.

Cellular Location

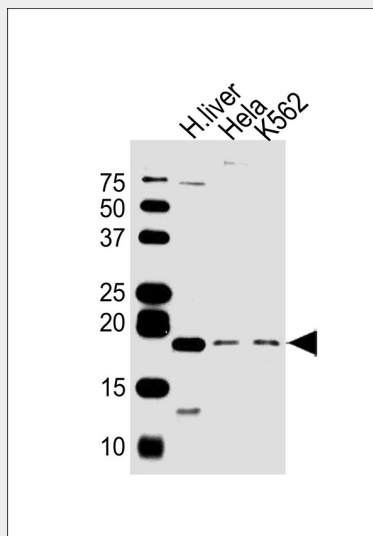
Mitochondrion inner membrane; Multi-pass membrane protein

BRP44L Antibody (C-term) - Protocols

Provided below are standard protocols that you may find useful for product applications.

- [Western Blot](#)
- [Blocking Peptides](#)
- [Dot Blot](#)
- [Immunohistochemistry](#)
- [Immunofluorescence](#)
- [Immunoprecipitation](#)
- [Flow Cytometry](#)
- [Cell Culture](#)

BRP44L Antibody (C-term) - Images



All lanes : Anti-BRP44L Antibody (C-term) at 1:1000 dilution Lane 1: human liver lysates Lane 2: HeLa whole cell lysates Lane 3: K562 whole cell lysates Lysates/proteins at 20 µg per lane. Secondary Goat Anti-Rabbit IgG, (H+L), Peroxidase conjugated at 1/10000 dilution Predicted band size : 12 kDa Blocking/Dilution buffer: 5% NFD/MTBST.

BRP44L Antibody (C-term) - Background

Mediates the uptake of pyruvate into mitochondria.

BRP44L Antibody (C-term) - References

- Zhang Q.-H., et al. Genome Res. 10:1546-1560(2000).
Lai C.-H., et al. Genome Res. 10:703-713(2000).
Ota T., et al. Nat. Genet. 36:40-45(2004).

Mungall A.J., et al. Nature 425:805-811(2003).

Yu W.-Q., et al. Submitted (JUN-2000) to the EMBL/GenBank/DDBJ databases.