

**SLC25A37 Antibody (C-term)**  
**Affinity Purified Rabbit Polyclonal Antibody (Pab)**  
**Catalog # AW5376**

**Specification**

---

**SLC25A37 Antibody (C-term) - Product Information**

Application	IF, WB, IHC-P, FC,E
Primary Accession	<a href="#">O9NYZ2</a>
Reactivity	Human, Rat
Predicted	Mouse
Host	Rabbit
Clonality	Polyclonal
Calculated MW	H=37,21;M=38;R=37 KDa
Isotype	Rabbit IgG
Antigen Source	HUMAN

**SLC25A37 Antibody (C-term) - Additional Information**

**Gene ID** 51312

**Antigen Region**  
309-338

**Other Names**

Mitoferrin-1, Mitochondrial iron transporter 1, Mitochondrial solute carrier protein, Solute carrier family 25 member 37, SLC25A37, MFRN, MSCP

**Dilution**

IF~~1:25  
WB~~1:1000  
IHC-P~~1:10~50  
FC~~1:10~50

**Target/Specificity**

This SLC25A37 antibody is generated from rabbits immunized with a KLH conjugated synthetic peptide between 309-338 amino acids from the C-terminal region of human SLC25A37.

**Format**

Purified polyclonal antibody supplied in PBS with 0.09% (W/V) sodium azide. This antibody is purified through a protein A column, followed by peptide affinity purification.

**Storage**

Maintain refrigerated at 2-8°C for up to 2 weeks. For long term storage store at -20°C in small aliquots to prevent freeze-thaw cycles.

**Precautions**

SLC25A37 Antibody (C-term) is for research use only and not for use in diagnostic or therapeutic procedures.

## SLC25A37 Antibody (C-term) - Protein Information

**Name** SLC25A37

**Synonyms** MFRN, MSCP

### Function

Mitochondrial iron transporter that specifically mediates iron uptake in developing erythroid cells, thereby playing an essential role in heme biosynthesis.

### Cellular Location

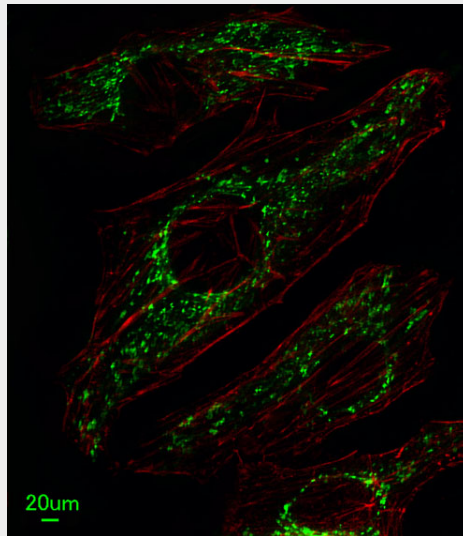
Mitochondrion inner membrane {ECO:0000250|UniProtKB:Q287T7}; Multi-pass membrane protein

## SLC25A37 Antibody (C-term) - Protocols

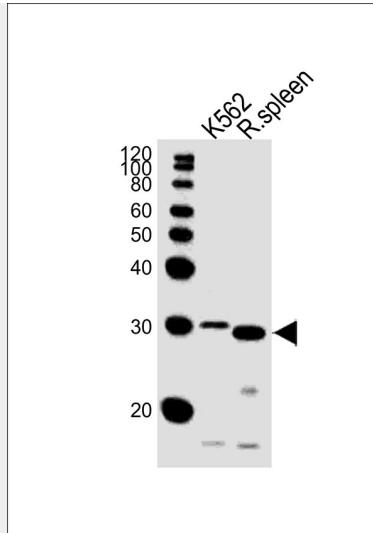
Provided below are standard protocols that you may find useful for product applications.

- [Western Blot](#)
- [Blocking Peptides](#)
- [Dot Blot](#)
- [Immunohistochemistry](#)
- [Immunofluorescence](#)
- [Immunoprecipitation](#)
- [Flow Cytometry](#)
- [Cell Culture](#)

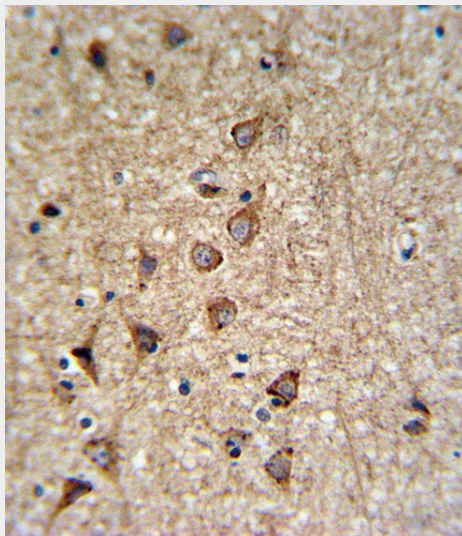
## SLC25A37 Antibody (C-term) - Images



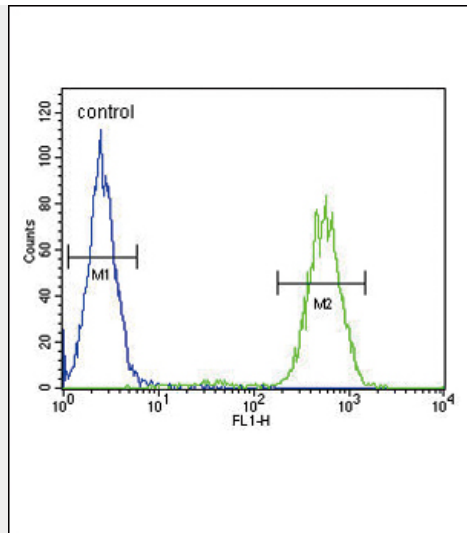
Immunofluorescent analysis of HeLa cells, using SLC25A37 Antibody (C-term) (Cat. #AW5376). AW5376 was diluted at 1:25 dilution. Alexa Fluor 488-conjugated goat anti-rabbit IgG at 1:400 dilution was used as the secondary antibody (green). Cytoplasmic actin was counterstained with Dylight Fluor® 554 (red) conjugated Phalloidin (red).



All lanes : Anti-SLC25A37 Antibody (C-term) at 1:1000 dilution Lane 1: K562 whole cell lysates  
Lane 2: rat spleen lysates Lysates/proteins at 20 µg per lane. Secondary Goat Anti-Rabbit IgG,  
(H+L), Peroxidase conjugated at 1/10000 dilution Predicted band size : 37 kDa Blocking/Dilution  
buffer: 5% NFD/MTBST.



SLC25A37 Antibody (C-term) (Cat. #AW5376) IHC analysis in formalin fixed and paraffin  
embedded brain tissue followed by peroxidase conjugation of the secondary antibody and DAB  
staining. This data demonstrates the use of the SLC25A37 Antibody (C-term) for  
immunohistochemistry. Clinical relevance has not been evaluated.



SLC25A37 Antibody (C-term) (Cat. #AW5376) flow cytometric analysis of MDA-MB231 cells (right histogram) compared to a negative control cell (left histogram).FITC-conjugated goat-anti-rabbit secondary antibodies were used for the analysis.

#### **SLC25A37 Antibody (C-term) - Background**

SLC25A37 belongs to the SLC25 family of mitochondrial carrier proteins (Haitina et al., 2006 [PubMed 16949250]).[supplied by OMIM].

#### **SLC25A37 Antibody (C-term) - References**

Kaneko, K., et al. FEBS J. 276(5):1370-1382(2009) Haitina, T., et al. Genomics 88(6):779-790(2006)  
 Shaw, G.C., et al. Nature 440(7080):96-100(2006) Li, Q.Z., et al. Mamm. Genome 12(11):830-836(2001)