

STRADA Antibody (C-term)
Purified Rabbit Polyclonal Antibody (Pab)
Catalog # AW5374**Specification**

STRADA Antibody (C-term) - Product Information

Application	IF, WB, IHC-P, FC,E
Primary Accession	Q7RTN6
Other Accession	Q3UUJ4 , Q4R6X5
Reactivity	Human, Mouse
Host	Rabbit
Clonality	Polyclonal
Calculated MW	H=48,39,44,42;M=48,4 KDa
Isotype	Rabbit IgG
Antigen Source	HUMAN

STRADA Antibody (C-term) - Additional Information**Gene ID** 92335**Antigen Region**
303-346**Other Names**

STE20-related kinase adapter protein alpha, STRAD alpha, STE20-related adapter protein, Serologically defined breast cancer antigen NY-BR-96, STRADA, LYK5
{ECO:0000312|EMBL:AAP422801}, STRAD

Dilution

IF~~1:25
WB~~1:1000
IHC-P~~1:25
FC~~1:25

Target/Specificity

This STRADA antibody is generated from a rabbit immunized with a KLH conjugated synthetic peptide between 303-346 amino acids from the C-terminal region of human STRADA.

Format

Purified polyclonal antibody supplied in PBS with 0.09% (W/V) sodium azide. This antibody is purified through a protein A column, followed by peptide affinity purification.

Storage

Maintain refrigerated at 2-8°C for up to 2 weeks. For long term storage store at -20°C in small aliquots to prevent freeze-thaw cycles.

Precautions

STRADA Antibody (C-term) is for research use only and not for use in diagnostic or therapeutic procedures.

STRADA Antibody (C-term) - Protein Information

Name STRADA

Synonyms LYK5 {ECO:0000312|EMBL:AAP42280.1}, STRA

Function

Pseudokinase which, in complex with CAB39/MO25 (CAB39/MO25alpha or CAB39L/MO25beta), binds to and activates STK11/LKB1. Adopts a closed conformation typical of active protein kinases and binds STK11/LKB1 as a pseudosubstrate, promoting conformational change of STK11/LKB1 in an active conformation.

Cellular Location

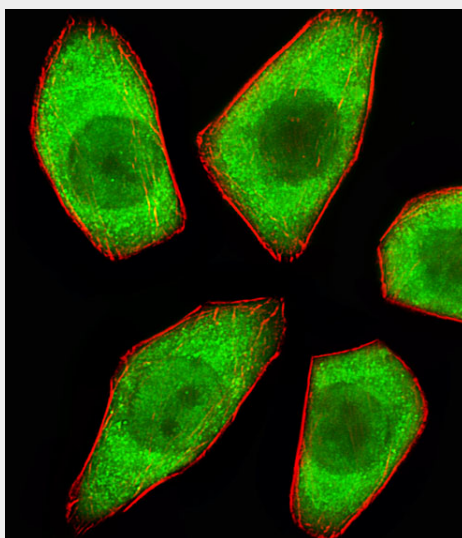
Nucleus. Cytoplasm

STRADA Antibody (C-term) - Protocols

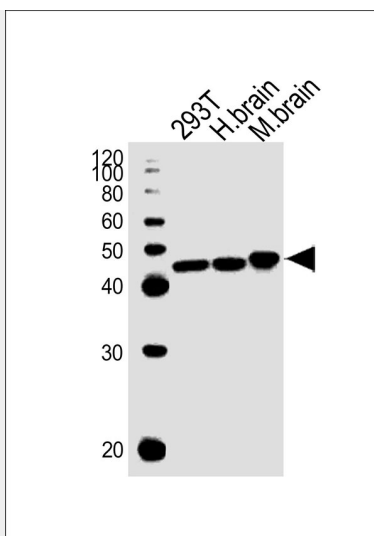
Provided below are standard protocols that you may find useful for product applications.

- [Western Blot](#)
- [Blocking Peptides](#)
- [Dot Blot](#)
- [Immunohistochemistry](#)
- [Immunofluorescence](#)
- [Immunoprecipitation](#)
- [Flow Cytometry](#)
- [Cell Culture](#)

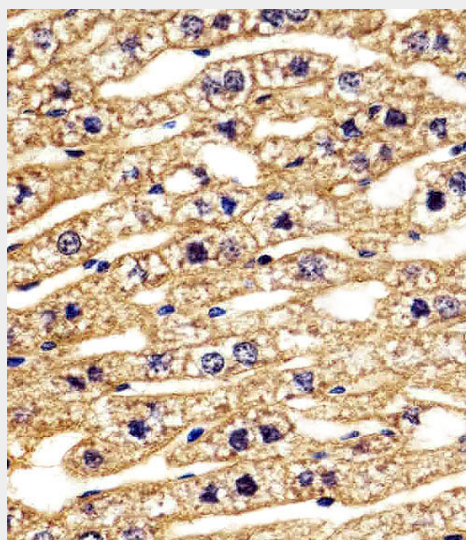
STRADA Antibody (C-term) - Images



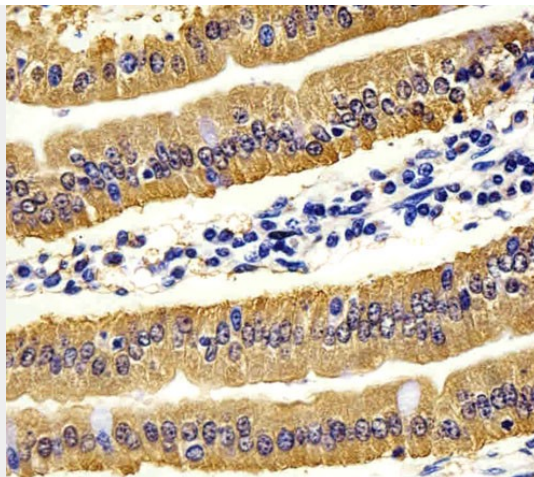
Fluorescent image of A549 cells stained with STRADA Antibody (C-term)(Cat#AW5374). AW5374 was diluted at 1:25 dilution. An Alexa Fluor 488-conjugated goat anti-rabbit IgG at 1:400 dilution was used as the secondary antibody (green). Cytoplasmic actin was counterstained with Alexa Fluor® 555 conjugated with Phalloidin (red).



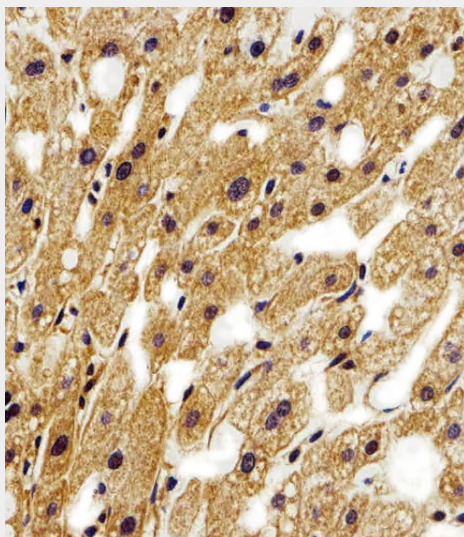
All lanes : Anti-STRADA Antibody (C-term) at 1:1000 dilution Lane 1: 293T whole cell lysates Lane 2: human brain lysates Lane 3: mouse brain lysates Lysates/proteins at 20 µg per lane. Secondary Goat Anti-Rabbit IgG, (H+L), Peroxidase conjugated at 1/10000 dilution Predicted band size : 48 kDa Blocking/Dilution buffer: 5% NFDM/TBST.



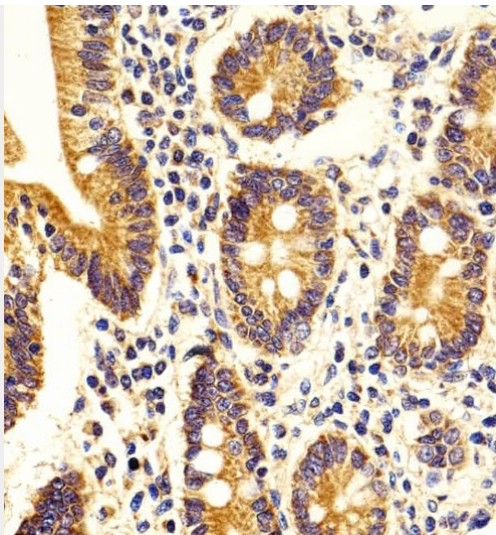
Immunohistochemical analysis of paraffin-embedded M. liver section using STRADA Antibody (C-term)(Cat#AW5374). AW5374 was diluted at 1:100 dilution. A peroxidase-conjugated goat anti-rabbit IgG at 1:400 dilution was used as the secondary antibody, followed by DAB staining.



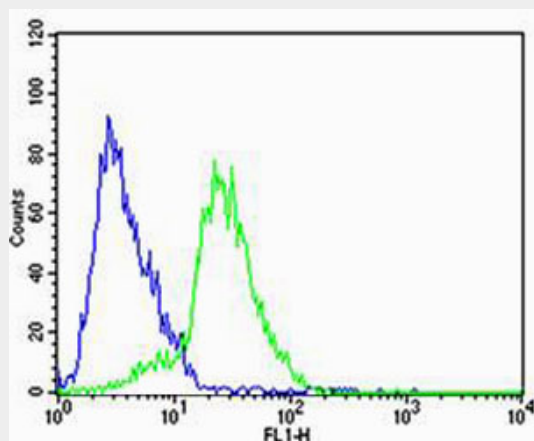
Immunohistochemical analysis of paraffin-embedded M. duodenum section using STRADA Antibody (C-term)(Cat#AW5374). AW5374 was diluted at 1:100 dilution. A peroxidase-conjugated goat anti-rabbit IgG at 1:400 dilution was used as the secondary antibody, followed by DAB staining.



Immunohistochemical analysis of paraffin-embedded H. liver section using STRADA Antibody (C-term)(Cat#AW5374). AW5374 was diluted at 1:100 dilution. A peroxidase-conjugated goat anti-rabbit IgG at 1:400 dilution was used as the secondary antibody, followed by DAB staining.



Immunohistochemical analysis of paraffin-embedded H. duodenum section using STRADA Antibody (C-term)(Cat#AW5374). AW5374 was diluted at 1:100 dilution. A peroxidase-conjugated goat anti-rabbit IgG at 1:400 dilution was used as the secondary antibody, followed by DAB staining.



Flow cytometric analysis of SH-SY5Y cells using STRADA Antibody (C-term)(green, Cat#AW5374) compared to an isotype control of rabbit IgG(blue). AW5374 was diluted at 1:25 dilution. An Alexa Fluor® 488 goat anti-rabbit IgG at 1:400 dilution was used as the secondary antibody.

STRADA Antibody (C-term) - Background

Pseudokinase which, in complex with CAB39/MO25 (CAB39/MO25alpha or CAB39L/MO25beta), binds to and activates STK11/LKB1. Adopts a closed conformation typical of active protein kinases and binds STK11/LKB1 as a pseudosubstrate, promoting conformational change of STK11/LKB1 in an active conformation.

STRADA Antibody (C-term) - References

Scanlan M.J., et al. *Cancer Immun.* 1:4-4(2001).
 Shan Y.X., et al. Submitted (AUG-2003) to the EMBL/GenBank/DDBJ databases.
 Ota T., et al. *Nat. Genet.* 36:40-45(2004).
 Bechtel S., et al. *BMC Genomics* 8:399-399(2007).
 Zody M.C., et al. *Nature* 440:1045-1049(2006).