

**CHML Antibody (C-term)**  
**Purified Rabbit Polyclonal Antibody (Pab)**  
**Catalog # AW5373****Specification**

---

**CHML Antibody (C-term) - Product Information**

Application	<b>WB, IHC-P, FC,E</b>
Primary Accession	<a href="#">P26374</a>
Reactivity	<b>Human</b>
Host	<b>Rabbit</b>
Clonality	<b>Polyclonal</b>
Calculated MW	<b>H=74 KDa</b>
Isotype	<b>Rabbit IgG</b>
Antigen Source	<b>HUMAN</b>

**CHML Antibody (C-term) - Additional Information****Gene ID** 1122**Antigen Region**  
624-656**Other Names**

Rab proteins geranylgeranyltransferase component A 2, Choroideremia-like protein, Rab escort protein 2, REP-2, CHML, REP2

**Dilution**

WB~~1:1000

IHC-P~~1:25

FC~~1:25

**Target/Specificity**

This CHML antibody is generated from a rabbit immunized with a KLH conjugated synthetic peptide between 624-656 amino acids from the C-terminal region of human CHML.

**Format**

Purified polyclonal antibody supplied in PBS with 0.09% (W/V) sodium azide. This antibody is purified through a protein A column, followed by peptide affinity purification.

**Storage**

Maintain refrigerated at 2-8°C for up to 2 weeks. For long term storage store at -20°C in small aliquots to prevent freeze-thaw cycles.

**Precautions**

CHML Antibody (C-term) is for research use only and not for use in diagnostic or therapeutic procedures.

**CHML Antibody (C-term) - Protein Information**

**Name** CHML

**Synonyms** REP2

**Function**

Substrate-binding subunit (component A) of the Rab geranylgeranyltransferase (GGTase) complex. Binds unprenylated Rab proteins and presents the substrate peptide to the catalytic component B. The component A is thought to be regenerated by transferring its prenylated Rab back to the donor membrane. Less effective than CHM in supporting prenylation of Rab3 family.

**Cellular Location**

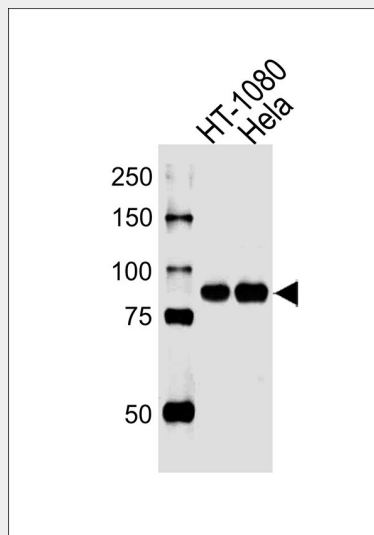
Cytoplasm, cytosol.

**CHML Antibody (C-term) - Protocols**

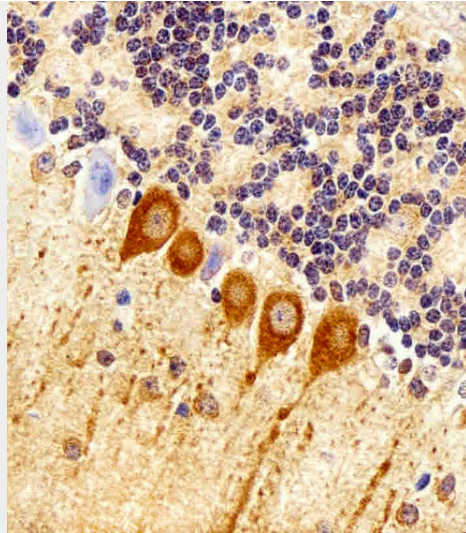
Provided below are standard protocols that you may find useful for product applications.

- [Western Blot](#)
- [Blocking Peptides](#)
- [Dot Blot](#)
- [Immunohistochemistry](#)
- [Immunofluorescence](#)
- [Immunoprecipitation](#)
- [Flow Cytometry](#)
- [Cell Culture](#)

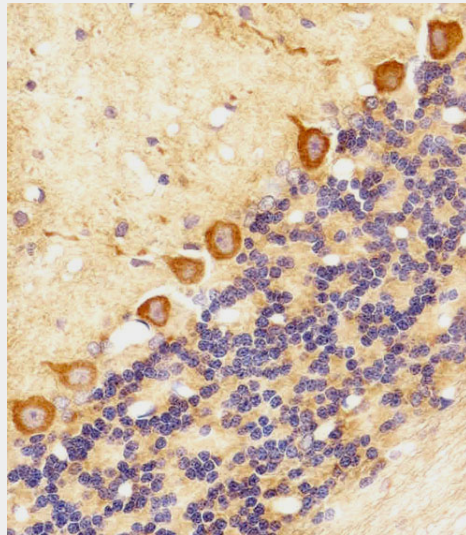
**CHML Antibody (C-term) - Images**



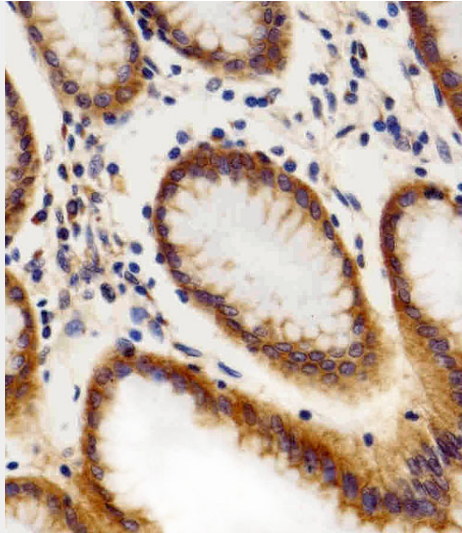
All lanes : Anti-CHML Antibody (C-term) at 1/1000 dilution Lane 1: HT-1080 whole cell lysates Lane 2: HeLa whole cell lysates Lysates/proteins at 20 µg per lane. Secondary Goat Anti-Rabbit IgG, (H+L), Peroxidase conjugated at 1/10000 dilution Predicted band size : 74 kDa Blocking/Dilution buffer: 5% NFD/MTBST.



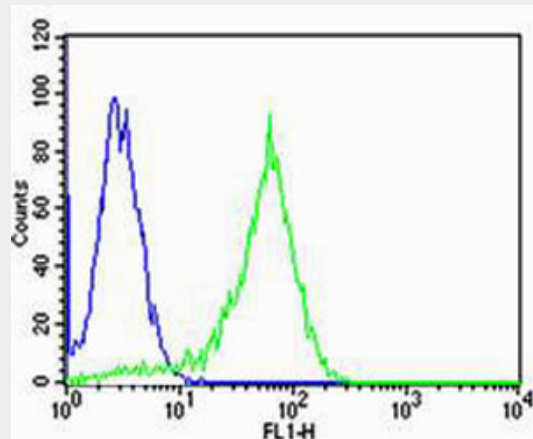
Immunohistochemical analysis of paraffin-embedded M. cerebellum section using CHML Antibody (C-term)(Cat#AW5373). AW5373 was diluted at 1:100 dilution. A peroxidase-conjugated goat anti-rabbit IgG at 1:400 dilution was used as the secondary antibody, followed by DAB staining.



Immunohistochemical analysis of paraffin-embedded R. cerebellum section using CHML Antibody (C-term)(Cat#AW5373). AW5373 was diluted at 1:100 dilution. A peroxidase-conjugated goat anti-rabbit IgG at 1:400 dilution was used as the secondary antibody, followed by DAB staining.



Immunohistochemical analysis of paraffin-embedded H. stomach section using CHML Antibody (C-term)(Cat#AW5373). AW5373 was diluted at 1:100 dilution. A peroxidase-conjugated goat anti-rabbit IgG at 1:400 dilution was used as the secondary antibody, followed by DAB staining.



Flow cytometric analysis of HeLa cells using CHML Antibody (C-term)(green, Cat#AW5373) compared to an isotype control of rabbit IgG(blue). AW5373 was diluted at 1:25 dilution. An Alexa Fluor® 488 goat anti-rabbit IgG at 1:400 dilution was used as the secondary antibody.

### **CHML Antibody (C-term) - Background**

Substrate-binding subunit (component A) of the Rab geranylgeranyltransferase (GGTase) complex. Binds unprenylated Rab proteins and presents the substrate peptide to the catalytic component B. The component A is thought to be regenerated by transferring its prenylated Rab back to the donor membrane. Less effective than CHM in supporting prenylation of Rab3 family.

### **CHML Antibody (C-term) - References**

- Cremers F.P.M., et al. Hum. Mol. Genet. 1:71-75(1992).
- Kasper G., et al. Gene 295:27-32(2002).
- Ota T., et al. Nat. Genet. 36:40-45(2004).
- Gregory S.G., et al. Nature 441:315-321(2006).
- Mural R.J., et al. Submitted (JUL-2005) to the EMBL/GenBank/DDBJ databases.