

IMMT Antibody (Center)
Purified Rabbit Polyclonal Antibody (Pab)
Catalog # AW5372

Specification

IMMT Antibody (Center) - Product Information

Application	WB,E
Primary Accession	Q16891
Reactivity	Human
Host	Rabbit
Clonality	Polyclonal
Calculated MW	H=84,83,80 KDa
Isotype	Rabbit IgG
Antigen Source	HUMAN

IMMT Antibody (Center) - Additional Information

Gene ID 10989

Antigen Region
170-203

Other Names

MICOS complex subunit MIC60, Cell proliferation-inducing gene 4/52 protein, Mitochondrial inner membrane protein, Mitofilin, p87/89, IMMT, HMP, MIC60, MINOS2

Dilution

WB~~1:1000

Target/Specificity

This IMMT antibody is generated from a rabbit immunized with a KLH conjugated synthetic peptide between 170-203 amino acids from the Central region of human IMMT.

Format

Purified polyclonal antibody supplied in PBS with 0.09% (W/V) sodium azide. This antibody is purified through a protein A column, followed by peptide affinity purification.

Storage

Maintain refrigerated at 2-8°C for up to 2 weeks. For long term storage store at -20°C in small aliquots to prevent freeze-thaw cycles.

Precautions

IMMT Antibody (Center) is for research use only and not for use in diagnostic or therapeutic procedures.

IMMT Antibody (Center) - Protein Information

Name IMMT

Synonyms HMP, MIC60, MINOS2

Function

Component of the MICOS complex, a large protein complex of the mitochondrial inner membrane that plays crucial roles in the maintenance of crista junctions, inner membrane architecture, and formation of contact sites to the outer membrane (PubMed: [22114354](http://www.uniprot.org/citations/22114354), PubMed: [25781180](http://www.uniprot.org/citations/25781180), PubMed: [32567732](http://www.uniprot.org/citations/32567732), PubMed: [33130824](http://www.uniprot.org/citations/33130824)). Plays an important role in the maintenance of the MICOS complex stability and the mitochondrial cristae morphology (PubMed: [22114354](http://www.uniprot.org/citations/22114354), PubMed: [25781180](http://www.uniprot.org/citations/25781180), PubMed: [32567732](http://www.uniprot.org/citations/32567732), PubMed: [33130824](http://www.uniprot.org/citations/33130824)).

Cellular Location

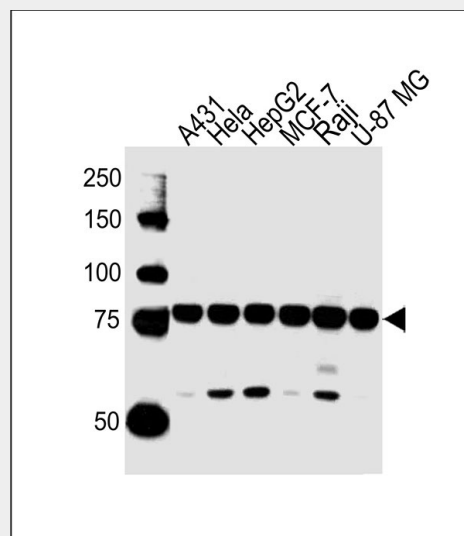
Mitochondrion inner membrane; Single-pass membrane protein. Mitochondrion

IMMT Antibody (Center) - Protocols

Provided below are standard protocols that you may find useful for product applications.

- [Western Blot](#)
- [Blocking Peptides](#)
- [Dot Blot](#)
- [Immunohistochemistry](#)
- [Immunofluorescence](#)
- [Immunoprecipitation](#)
- [Flow Cytometry](#)
- [Cell Culture](#)

IMMT Antibody (Center) - Images



All lanes : Anti-IMMT Antibody (Center) at 1/1000 dilution Lane 1: A431 whole cell lysates Lane 2: HeLa whole cell lysates Lane 3: HepG2 whole cell lysates Lane 4: MCF-7 whole cell lysates Lane 5: Raji whole cell lysates Lane 6: U-87 MG whole cell lysates

Raji whole cell lysates Lane 6: U-87 MG whole cell lysates Lysates/proteins at 20 µg per lane. Secondary Goat Anti-Rabbit IgG, (H+L), Peroxidase conjugated at 1/10000 dilution Predicted band size : 84 kDa Blocking/Dilution buffer: 5% NFDM/TBST.

IMMT Antibody (Center) - References

Icho T., et al. Gene 144:301-306(1994).

Gieffers C., et al. Exp. Cell Res. 232:395-399(1997).

Ebert L., et al. Submitted (JUN-2004) to the EMBL/GenBank/DDBJ databases.

Ota T., et al. Nat. Genet. 36:40-45(2004).

Kim J.W., et al. Submitted (FEB-2005) to the EMBL/GenBank/DDBJ databases.