

ZDHHC11 Antibody (C-term)
Purified Rabbit Polyclonal Antibody (Pab)
Catalog # AW5369

Specification

ZDHHC11 Antibody (C-term) - Product Information

| | |
|-------------------|------------------------|
| Application | WB,E |
| Primary Accession | O9H8X9 |
| Reactivity | Human |
| Host | Rabbit |
| Clonality | Polyclonal |
| Calculated MW | H=46 KDa |
| Isotype | Rabbit IgG |
| Antigen Source | HUMAN |

ZDHHC11 Antibody (C-term) - Additional Information

Gene ID 79844

Antigen Region
333-368

Other Names

Probable palmitoyltransferase ZDHHC11, Zinc finger DHHC domain-containing protein 11, DHHC-11, Zinc finger protein 399, ZDHHC11, ZNF399

Dilution

WB~~1:1000

Target/Specificity

This ZDHHC11 antibody is generated from a rabbit immunized with a KLH conjugated synthetic peptide between 333-368 amino acids from the C-terminal region of human ZDHHC11.

Format

Purified polyclonal antibody supplied in PBS with 0.09% (W/V) sodium azide. This antibody is purified through a protein A column, followed by peptide affinity purification.

Storage

Maintain refrigerated at 2-8°C for up to 2 weeks. For long term storage store at -20°C in small aliquots to prevent freeze-thaw cycles.

Precautions

ZDHHC11 Antibody (C-term) is for research use only and not for use in diagnostic or therapeutic procedures.

ZDHHC11 Antibody (C-term) - Protein Information

Name ZDHHC11 ([HGNC:19158](#))

Function

Endoplasmic reticulum-localized palmitoyltransferase that could catalyze the addition of palmitate onto various protein substrates and be involved in a variety of cellular processes (By similarity). Has a palmitoyltransferase activity toward NCDN and regulates NCDN association with endosome membranes through this palmitoylation (By similarity). May play a role in cell proliferation (PubMed:28331227).

Cellular Location

Endoplasmic reticulum membrane; Multi-pass membrane protein

Tissue Location

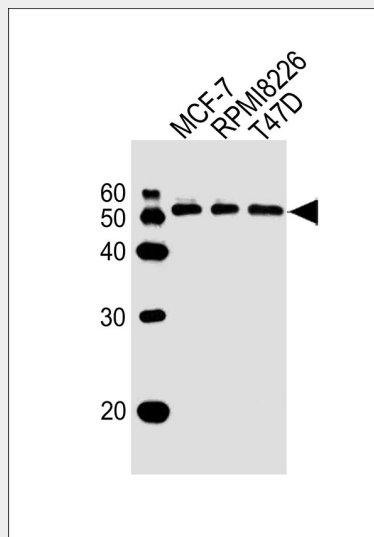
Expressed in testis..

ZDHHC11 Antibody (C-term) - Protocols

Provided below are standard protocols that you may find useful for product applications.

- [Western Blot](#)
- [Blocking Peptides](#)
- [Dot Blot](#)
- [Immunohistochemistry](#)
- [Immunofluorescence](#)
- [Immunoprecipitation](#)
- [Flow Cytometry](#)
- [Cell Culture](#)

ZDHHC11 Antibody (C-term) - Images



All lanes : Anti-ZDHHC11 Antibody (C-term) at 1/1000 dilution Lane 1: MCF-7 whole cell lysates Lane 2: RPMI8226 whole cell lysates Lane 3: T47D whole cell lysates Lysates/proteins at 20 µg per lane. Secondary Goat Anti-Rabbit IgG, (H+L), Peroxidase conjugated at 1/10000 dilution Predicted band size : 46 kDa Blocking/Dilution buffer: 5% NFDm/TBST.

ZDHHC11 Antibody (C-term) - References

Ota T., et al. Nat. Genet. 36:40-45(2004).