

CTSD(heavy chain) Antibody (Center)
Purified Rabbit Polyclonal Antibody (Pab)
Catalog # AW5367**Specification**

CTSD(heavy chain) Antibody (Center) - Product Information

Application	WB,E
Primary Accession	P07339
Other Accession	P18242 , P80209
Reactivity	Human
Predicted	Bovine, Mouse
Host	Rabbit
Clonality	Polyclonal
Calculated MW	H=45;M=45;Rat=45 KDa
Isotype	Rabbit IgG
Antigen Source	HUMAN

CTSD(heavy chain) Antibody (Center) - Additional Information**Gene ID** 1509**Antigen Region**
241-273**Other Names**

Cathepsin D, Cathepsin D light chain, Cathepsin D heavy chain, CTSD, CPSD

Dilution

WB~~1:1000

Target/Specificity

This CTSD(heavy chain) antibody is generated from a rabbit immunized with a KLH conjugated synthetic peptide between 241-273 amino acids from the Central region of human CTSD(heavy chain).

Format

Purified polyclonal antibody supplied in PBS with 0.09% (W/V) sodium azide. This antibody is purified through a protein A column, followed by peptide affinity purification.

Storage

Maintain refrigerated at 2-8°C for up to 2 weeks. For long term storage store at -20°C in small aliquots to prevent freeze-thaw cycles.

Precautions

CTSD(heavy chain) Antibody (Center) is for research use only and not for use in diagnostic or therapeutic procedures.

CTSD(heavy chain) Antibody (Center) - Protein Information

Name CTSD

Synonyms CPSD

Function

Acid protease active in intracellular protein breakdown. Plays a role in APP processing following cleavage and activation by ADAM30 which leads to APP degradation (PubMed:27333034). Involved in the pathogenesis of several diseases such as breast cancer and possibly Alzheimer disease.

Cellular Location

Lysosome. Melanosome. Secreted, extracellular space. Note=Identified by mass spectrometry in melanosome fractions from stage I to stage IV. In aortic samples, detected as an extracellular protein loosely bound to the matrix (PubMed:20551380)

Tissue Location

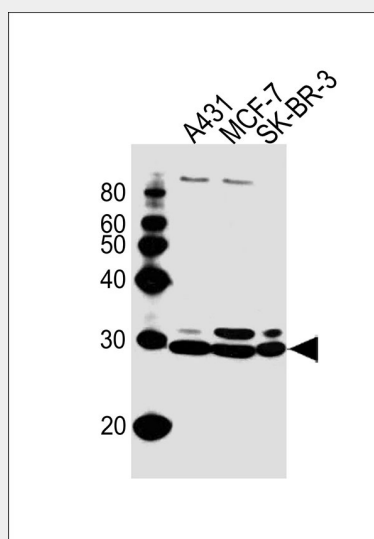
Expressed in the aorta extracellular space (at protein level) (PubMed:20551380). Expressed in liver (at protein level) (PubMed:1426530).

CTSD(heavy chain) Antibody (Center) - Protocols

Provided below are standard protocols that you may find useful for product applications.

- [Western Blot](#)
- [Blocking Peptides](#)
- [Dot Blot](#)
- [Immunohistochemistry](#)
- [Immunofluorescence](#)
- [Immunoprecipitation](#)
- [Flow Cytometry](#)
- [Cell Culture](#)

CTSD(heavy chain) Antibody (Center) - Images



All lanes : Anti-CTSD(heavy chain) Antibody (Center) at 1/1000 dilution Lane 1: A431 whole cell lysates Lane 2: MCF-7 whole cell lysates Lane 3: SK-BR-3 whole cell lysates Lysates/proteins at 20 µg per lane. Secondary Goat Anti-Rabbit IgG, (H+L), Peroxidase conjugated at 1/10000 dilution

Predicted band size : 45 kDa Blocking/Dilution buffer: 5% NFDM/TBST.

CTSD(heavy chain) Antibody (Center) - Background

Acid protease active in intracellular protein breakdown. Involved in the pathogenesis of several diseases such as breast cancer and possibly Alzheimer disease.

CTSD(heavy chain) Antibody (Center) - References

- Faust P.L.,et al.Proc. Natl. Acad. Sci. U.S.A. 82:4910-4914(1985).
Westley B.R.,et al.Nucleic Acids Res. 15:3773-3786(1987).
Redecker B.,et al.DNA Cell Biol. 10:423-431(1991).
Ebert L.,et al.Submitted (JUN-2004) to the EMBL/GenBank/DDBJ databases.
Kalnine N.,et al.Submitted (OCT-2004) to the EMBL/GenBank/DDBJ databases.