

**PPP2R1B Antibody (N-term)**  
**Purified Rabbit Polyclonal Antibody (Pab)**  
**Catalog # AW5358**

**Specification**

---

**PPP2R1B Antibody (N-term) - Product Information**

Application	WB,E
Primary Accession	<a href="#">P30154</a>
Other Accession	<a href="#">Q4QQT4</a> , <a href="#">P54613</a> , <a href="#">Q7TNP2</a>
Reactivity	Human, Mouse, Rat
Host	Rabbit
Clonality	polyclonal
Calculated MW	H=66, 74, 61, 52;M=66;Rat=66 KDa
Isotype	Rabbit IgG
Antigen Source	HUMAN

**PPP2R1B Antibody (N-term) - Additional Information**

**Gene ID** 5519

**Antigen Region**  
86-120

**Other Names**

Serine/threonine-protein phosphatase 2A 65 kDa regulatory subunit A beta isoform, PP2A subunit A isoform PR65-beta, PP2A subunit A isoform R1-beta, PPP2R1B

**Dilution**

WB~~1:1000

**Target/Specificity**

This PPP2R1B antibody is generated from a rabbit immunized with a KLH conjugated synthetic peptide between 86-120 amino acids from the N-terminal region of human PPP2R1B.

**Format**

Purified polyclonal antibody supplied in PBS with 0.09% (W/V) sodium azide. This antibody is purified through a protein A column, followed by peptide affinity purification.

**Storage**

Maintain refrigerated at 2-8°C for up to 2 weeks. For long term storage store at -20°C in small aliquots to prevent freeze-thaw cycles.

**Precautions**

PPP2R1B Antibody (N-term) is for research use only and not for use in diagnostic or therapeutic procedures.

**PPP2R1B Antibody (N-term) - Protein Information**

**Name** PPP2R1B

**Function**

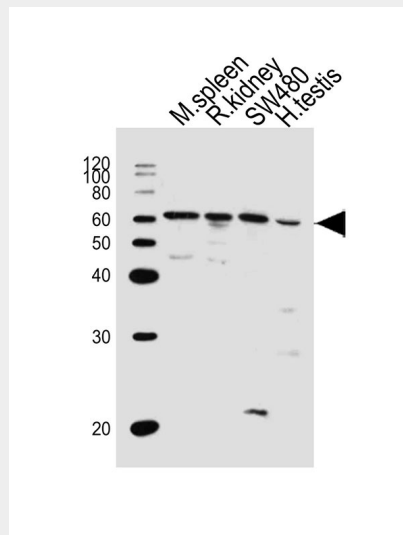
The PR65 subunit of protein phosphatase 2A serves as a scaffolding molecule to coordinate the assembly of the catalytic subunit and a variable regulatory B subunit.

**PPP2R1B Antibody (N-term) - Protocols**

Provided below are standard protocols that you may find useful for product applications.

- [Western Blot](#)
- [Blocking Peptides](#)
- [Dot Blot](#)
- [Immunohistochemistry](#)
- [Immunofluorescence](#)
- [Immunoprecipitation](#)
- [Flow Cytometry](#)
- [Cell Culture](#)

**PPP2R1B Antibody (N-term) - Images**



All lanes : Anti-PPP2R1B Antibody (N-term)(AW5358) at 1/1000 dilution Lane 1: mouse spleen lysates Lane 2: rat kidney lysates Lane 3: SW480 whole cell lysates Lane 4: human testis lysates Lysates/proteins at 20 µg per lane. Secondary Goat Anti-Rabbit IgG, (H+L), Peroxidase conjugated at 1/10000 dilution Predicted band size : 62 kDa Blocking/Dilution buffer: 5% NFDN/TBST.

**PPP2R1B Antibody (N-term) - Background**

The PR65 subunit of protein phosphatase 2A serves as a scaffolding molecule to coordinate the assembly of the catalytic subunit and a variable regulatory B subunit.

**PPP2R1B Antibody (N-term) - References**

- Baysal B.E.,et al.Gene 217:107-116(1998).  
Wang S.S.,et al.Science 282:284-287(1998).  
Baysal B.E.,et al.Eur. J. Hum. Genet. 9:121-129(2001).  
Ota T.,et al.Nat. Genet. 36:40-45(2004).

Taylor T.D., et al. Nature 440:497-500(2006).