

CHCHD3 Antibody (Center)
Purified Rabbit Polyclonal Antibody (Pab)
Catalog # AW5353**Specification**

CHCHD3 Antibody (Center) - Product Information

Application	WB,E
Primary Accession	O9NX63
Reactivity	Human
Host	Rabbit
Clonality	polyclonal
Calculated MW	H=26 KDa
Isotype	Rabbit IgG
Antigen Source	HUMAN

CHCHD3 Antibody (Center) - Additional Information**Gene ID** 54927**Antigen Region**
83-116**Other Names**

Coiled-coil-helix-coiled-coil-helix domain-containing protein 3, mitochondrial, CHCHD3, MINOS3

Dilution

WB~~1:1000

Target/Specificity

This CHCHD3 antibody is generated from a rabbit immunized with a KLH conjugated synthetic peptide between 83-116 amino acids from the Central region of human CHCHD3.

Format

Purified polyclonal antibody supplied in PBS with 0.09% (W/V) sodium azide. This antibody is purified through a protein A column, followed by peptide affinity purification.

Storage

Maintain refrigerated at 2-8°C for up to 2 weeks. For long term storage store at -20°C in small aliquots to prevent freeze-thaw cycles.

Precautions

CHCHD3 Antibody (Center) is for research use only and not for use in diagnostic or therapeutic procedures.

CHCHD3 Antibody (Center) - Protein Information**Name** CHCHD3

Synonyms MIC19, MINOS3

Function

Component of the MICOS complex, a large protein complex of the mitochondrial inner membrane that plays crucial roles in the maintenance of crista junctions, inner membrane architecture, and formation of contact sites to the outer membrane (PubMed:25781180, PubMed:32567732, PubMed:33130824). Plays an important role in the maintenance of the MICOS complex stability and the mitochondrial cristae morphology (PubMed:25781180, PubMed:32567732, PubMed:33130824). Has also been shown to function as a transcription factor which binds to the BAG1 promoter and represses BAG1 transcription (PubMed:22567091).

Cellular Location

Mitochondrion inner membrane {ECO:0000250|UniProtKB:Q9CRB9}; Lipid-anchor; Intermembrane side {ECO:0000250|UniProtKB:Q9CRB9}. Cytoplasm. Nucleus Mitochondrion

Tissue Location

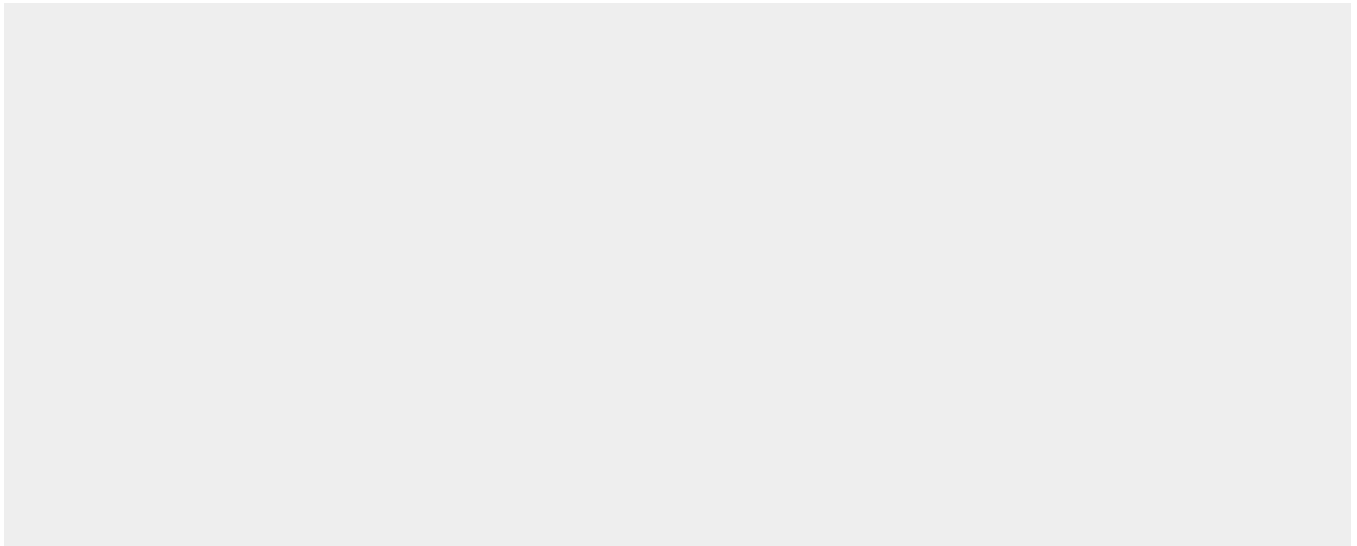
Detected at low levels in brain, placenta, lung, liver, kidney and pancreas with increased levels in heart and skeletal muscle. Higher expression in primary lung cancers than in normal lung tissue.

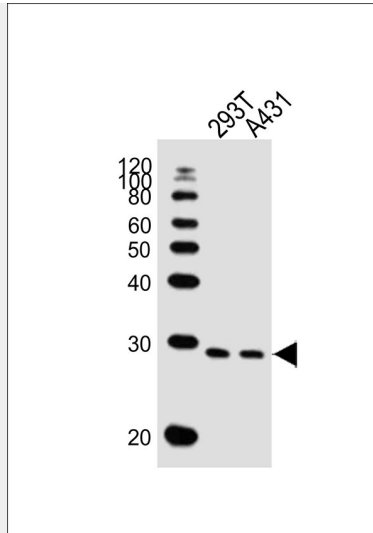
CHCHD3 Antibody (Center) - Protocols

Provided below are standard protocols that you may find useful for product applications.

- [Western Blot](#)
- [Blocking Peptides](#)
- [Dot Blot](#)
- [Immunohistochemistry](#)
- [Immunofluorescence](#)
- [Immunoprecipitation](#)
- [Flow Cytometry](#)
- [Cell Culture](#)

CHCHD3 Antibody (Center) - Images





All lanes : Anti-CHCHD3 Antibody (Center)(AW5353) at 1/1000 dilution Lane 1: 293T whole cell lysates Lane 2: A431 whole cell lysates Lysates/proteins at 20 µg per lane. Secondary Goat Anti-Rabbit IgG, (H+L), Peroxidase conjugated at 1/10000 dilution Predicted band size : 28 kDa Blocking/Dilution buffer: 5% NFDN/TBST.

CHCHD3 Antibody (Center) - Background

Required for maintenance of mitochondrial crista integrity and mitochondrial function. May act as a scaffolding protein that stabilizes protein complexes involved in crista architecture and protein import. Has also been shown to function as a transcription factor which binds to the BAG1 promoter and represses BAG1 transcription.

CHCHD3 Antibody (Center) - References

- Ota T., et al. Nat. Genet. 36:40-45(2004).
- Daub H., et al. Mol. Cell 31:438-448(2008).
- Dephore N., et al. Proc. Natl. Acad. Sci. U.S.A. 105:10762-10767(2008).
- Mayya V., et al. Sci. Signal. 2:RA46-RA46(2009).
- Choudhary C., et al. Science 325:834-840(2009).