

**RPS21 Antibody (C-term)**  
**Affinity Purified Rabbit Polyclonal Antibody (Pab)**  
**Catalog # AW5345****Specification**

---

**RPS21 Antibody (C-term) - Product Information**

Application	WB,E
Primary Accession	<a href="#">P63220</a>
Other Accession	<a href="#">P05765</a> , <a href="#">P63221</a> , <a href="#">O9CQR2</a> , <a href="#">Q32PB8</a>
Reactivity	Human
Predicted	Bovine, Mouse, Pig, Rat
Host	Rabbit
Clonality	Polyclonal
Calculated MW	H=9,M=9,Rat=9 KDa
Isotype	Rabbit IgG
Antigen Source	HUMAN

**RPS21 Antibody (C-term) - Additional Information****Gene ID** 6227**Antigen Region**  
44-71**Other Names**  
RPS21;40S ribosomal protein S21**Dilution**  
WB~~1:1000**Target/Specificity**  
This RPS21 antibody is generated from rabbits immunized with a KLH conjugated synthetic peptide between 44-71 amino acids from the C-terminal region of human RPS21.**Format**  
Purified polyclonal antibody supplied in PBS with 0.09% (W/V) sodium azide. This antibody is purified through a protein A column, followed by peptide affinity purification.**Storage**  
Maintain refrigerated at 2-8°C for up to 2 weeks. For long term storage store at -20°C in small aliquots to prevent freeze-thaw cycles.**Precautions**  
RPS21 Antibody (C-term) is for research use only and not for use in diagnostic or therapeutic procedures.**RPS21 Antibody (C-term) - Protein Information**

## Name RPS21

### Function

Component of the small ribosomal subunit (PubMed:<a href="http://www.uniprot.org/citations/23636399" target="\_blank">23636399</a>, PubMed:<a href="http://www.uniprot.org/citations/25901680" target="\_blank">25901680</a>, PubMed:<a href="http://www.uniprot.org/citations/25957688" target="\_blank">25957688</a>). The ribosome is a large ribonucleoprotein complex responsible for the synthesis of proteins in the cell (PubMed:<a href="http://www.uniprot.org/citations/23636399" target="\_blank">23636399</a>, PubMed:<a href="http://www.uniprot.org/citations/25901680" target="\_blank">25901680</a>, PubMed:<a href="http://www.uniprot.org/citations/25957688" target="\_blank">25957688</a>).

### Cellular Location

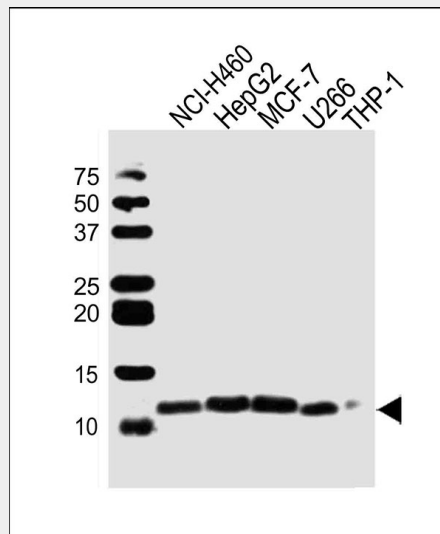
Cytoplasm, cytosol. Cytoplasm Rough endoplasmic reticulum {ECO:0000250|UniProtKB:P63221} Note=Detected on cytosolic polysomes (PubMed:25957688). Detected in ribosomes that are associated with the rough endoplasmic reticulum (By similarity). {ECO:0000250|UniProtKB:P63221, ECO:0000269|PubMed:25957688}

## RPS21 Antibody (C-term) - Protocols

Provided below are standard protocols that you may find useful for product applications.

- [Western Blot](#)
- [Blocking Peptides](#)
- [Dot Blot](#)
- [Immunohistochemistry](#)
- [Immunofluorescence](#)
- [Immunoprecipitation](#)
- [Flow Cytometry](#)
- [Cell Culture](#)

## RPS21 Antibody (C-term) - Images



Western blot analysis of lysates from NCI-H460, HepG2, MCF-7, U266, THP-1 cell line (from left to right), using RPS21 Antibody (C-term) (Cat. #AW5345). AW5345 was diluted at 1:1000 at each lane. A goat anti-rabbit IgG H&L (HRP) at 1:10000 dilution was used as the secondary antibody. Lysates at 20ug per lane.

**RPS21 Antibody (C-term) - References**

- Bhat K.S., et al. Nucleic Acids Res. 21:2939-2939(1993).  
Smirnova E.V., et al. Bioorg. Khim. 26:392-396(2000).  
Yoshihama M., et al. Genome Res. 12:379-390(2002).  
Deloukas P., et al. Nature 414:865-871(2001).  
Kenmochi N., et al. Genome Res. 8:509-523(1998).