

**SERPINA1(Short peptide from AAT) Antibody (C-term)**  
**Purified Rabbit Polyclonal Antibody (Pab)**  
**Catalog # AW5330**

**Specification**

---

**SERPINA1(Short peptide from AAT) Antibody (C-term) - Product Information**

Application	WB,E
Primary Accession	<a href="#">P01009</a>
Reactivity	Human
Host	Rabbit
Clonality	polyclonal
Calculated MW	H=47 KDa
Isotype	Rabbit IgG
Antigen Source	HUMAN

**SERPINA1(Short peptide from AAT) Antibody (C-term) - Additional Information**

**Gene ID** 5265

**Antigen Region**  
390-418

**Other Names**

Alpha-1-antitrypsin, Alpha-1 protease inhibitor, Alpha-1-antiproteinase, Serpin A1, Short peptide from AAT, SPAAT, SERPINA1, AAT, PI

**Dilution**

WB~~1:1000

**Target/Specificity**

This SERPINA1(Short peptide from AAT) antibody is generated from a rabbit immunized with a KLH conjugated synthetic peptide between 390-418 amino acids from the C-terminal region of human SERPINA1(Short peptide from AAT).

**Format**

Purified polyclonal antibody supplied in PBS with 0.09% (W/V) sodium azide. This antibody is purified through a protein A column, followed by peptide affinity purification.

**Storage**

Maintain refrigerated at 2-8°C for up to 2 weeks. For long term storage store at -20°C in small aliquots to prevent freeze-thaw cycles.

**Precautions**

SERPINA1(Short peptide from AAT) Antibody (C-term) is for research use only and not for use in diagnostic or therapeutic procedures.

**SERPINA1(Short peptide from AAT) Antibody (C-term) - Protein Information**

**Name** SERPINA1 ([HGNC:8941](#))

**Synonyms** AAT, PI

#### Function

Inhibitor of serine proteases. Its primary target is elastase, but it also has a moderate affinity for plasmin and thrombin. Irreversibly inhibits trypsin, chymotrypsin and plasminogen activator. The aberrant form inhibits insulin-induced NO synthesis in platelets, decreases coagulation time and has proteolytic activity against insulin and plasmin.

#### Cellular Location

Secreted. Endoplasmic reticulum. Note=The S and Z allele are not secreted effectively and accumulate intracellularly in the endoplasmic reticulum

#### Tissue Location

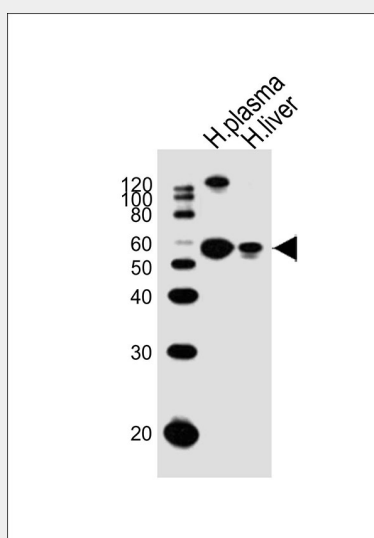
Ubiquitous. Expressed in leukocytes and plasma.

### SERPINA1(Short peptide from AAT) Antibody (C-term) - Protocols

Provided below are standard protocols that you may find useful for product applications.

- [Western Blot](#)
- [Blocking Peptides](#)
- [Dot Blot](#)
- [Immunohistochemistry](#)
- [Immunofluorescence](#)
- [Immunoprecipitation](#)
- [Flow Cytometry](#)
- [Cell Culture](#)

### SERPINA1(Short peptide from AAT) Antibody (C-term) - Images



Western blot analysis of lysates from human plasma, human liver tissue lysate (from left to right), using SERPINA1(Short peptide from AAT) Antibody (C-term)(Cat. #AW5330). AW5330 was diluted at 1:1000 at each lane. A goat anti-rabbit IgG H&L(HRP) at 1:10000 dilution was used as the secondary antibody. Lysates at 20ug per lane.

**SERPINA1(Short peptide from AAT) Antibody (C-term) - Background**

Inhibitor of serine proteases. Its primary target is elastase, but it also has a moderate affinity for plasmin and thrombin. Irreversibly inhibits trypsin, chymotrypsin and plasminogen activator. The aberrant form inhibits insulin-induced NO synthesis in platelets, decreases coagulation time and has proteolytic activity against insulin and plasmin.

**SERPINA1(Short peptide from AAT) Antibody (C-term) - References**

- Bollen A.,et al.DNA 2:255-264(1983).  
Long G.L.,et al.Biochemistry 23:4828-4837(1984).  
Rosenberg S.,et al.Nature 312:77-80(1984).  
Ciliberto G.,et al.Cell 41:531-540(1985).  
Nukiwa T.,et al.J. Biol. Chem. 261:15989-15994(1986).