

GABRG3 Antibody (N-term)
Affinity Purified Rabbit Polyclonal Antibody (Pab)
Catalog # AW5319

Specification

GABRG3 Antibody (N-term) - Product Information

Application	WB,E
Primary Accession	Q99928
Reactivity	Human
Predicted	Mouse
Host	Rabbit
Clonality	Polyclonal
Calculated MW	H=54,29;M=54 KDa
Isotype	Rabbit IgG
Antigen Source	HUMAN

GABRG3 Antibody (N-term) - Additional Information

Gene ID 2567

Antigen Region
1-29

Other Names

GABRG3; Gamma-aminobutyric acid receptor subunit gamma-3; GABA(A) receptor subunit gamma-3

Dilution

WB~~1:1000

Target/Specificity

This GABRG3 antibody is generated from rabbits immunized with a KLH conjugated synthetic peptide between 1-29 amino acids from the N-terminal region of human GABRG3.

Format

Purified polyclonal antibody supplied in PBS with 0.09% (W/V) sodium azide. This antibody is purified through a protein A column, followed by peptide affinity purification.

Storage

Maintain refrigerated at 2-8°C for up to 2 weeks. For long term storage store at -20°C in small aliquots to prevent freeze-thaw cycles.

Precautions

GABRG3 Antibody (N-term) is for research use only and not for use in diagnostic or therapeutic procedures.

GABRG3 Antibody (N-term) - Protein Information

Name GABRG3 ([HGNC:4088](#))

Function

Gamma subunit of the heteropentameric ligand-gated chloride channel gated by gamma-aminobutyric acid (GABA), a major inhibitory neurotransmitter in the brain (By similarity). GABA-gated chloride channels, also named GABA(A) receptors (GABAAR), consist of five subunits arranged around a central pore and contain GABA active binding site(s) located at the alpha and beta subunit interface(s) (By similarity). When activated by GABA, GABAARs selectively allow the flow of chloride across the cell membrane down their electrochemical gradient (By similarity).

Cellular Location

Postsynaptic cell membrane; Multi-pass membrane protein. Cell membrane; Multi-pass membrane protein

Tissue Location

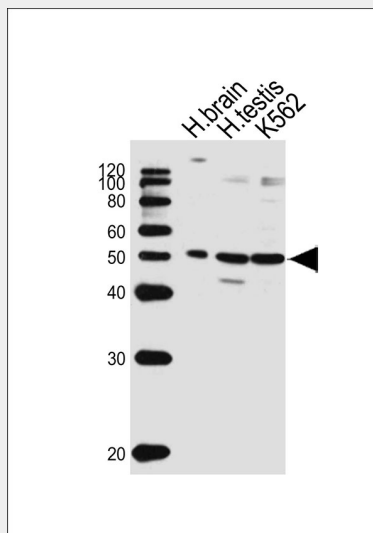
Expressed in brain..

GABRG3 Antibody (N-term) - Protocols

Provided below are standard protocols that you may find useful for product applications.

- [Western Blot](#)
- [Blocking Peptides](#)
- [Dot Blot](#)
- [Immunohistochemistry](#)
- [Immunofluorescence](#)
- [Immunoprecipitation](#)
- [Flow Cytometry](#)
- [Cell Culture](#)

GABRG3 Antibody (N-term) - Images



Western blot analysis of lysates from human brain, human testis tissue lysate, K562 cell line (from left to right), using GABRG3 Antibody (N-term) (Cat. #AW5319). AW5319 was diluted at 1:1000 at each lane. A goat anti-rabbit IgG H&L (HRP) at 1:10000 dilution was used as the secondary antibody. Lysates at 20ug per lane.

GABRG3 Antibody (N-term) - Background

GABRG3 is a family of proteins involved in the GABAergic neurotransmission of the mammalian central nervous system. GABRG3 is a member of the GABA-A receptor gene family of heteromeric pentameric ligand-gated ion channels through which GABA, the major inhibitory neurotransmitter in the mammalian brain, acts. GABA-A receptors are the site of action of a number of important pharmacologic agents including barbiturates, benzodiazepines, and ethanol (summary by Whiting et al., 1999 [PubMed 10414349]). For additional general information about the GABA-A receptor gene family, see GABRA1 (MIM 137160).

GABRG3 Antibody (N-term) - References

Guilmatre, A., et al. Arch. Gen. Psychiatry 66(9):947-956(2009)
Chakrabarti, B., et al. Autism Res 2(3):157-177(2009)
Tabakoff, B., et al. BMC Biol. 7, 70 (2009)