

**ALDH4A1 Antibody (C-term)**  
**Purified Rabbit Polyclonal Antibody (Pab)**  
**Catalog # AW5317****Specification**

---

**ALDH4A1 Antibody (C-term) - Product Information**

Application	WB,E
Primary Accession	<a href="#">P30038</a>
Other Accession	<a href="#">Q8CHT0</a> , <a href="#">Q7SY23</a> , <a href="#">A7YWE4</a>
Reactivity	Human
Predicted	Bovine, Zebrafish, Mouse
Host	Rabbit
Clonality	Polyclonal
Calculated MW	H=62,55,56;M=62 KDa
Isotype	Rabbit IgG
Antigen Source	HUMAN

**ALDH4A1 Antibody (C-term) - Additional Information****Gene ID** 8659**Antigen Region**  
522-556**Other Names**

Delta-1-pyrroline-5-carboxylate dehydrogenase, mitochondrial, P5C dehydrogenase, Aldehyde dehydrogenase family 4 member A1, L-glutamate gamma-semialdehyde dehydrogenase, ALDH4A1, ALDH4, P5CDH

**Dilution**

WB~~1:1000

**Target/Specificity**

This ALDH4A1 antibody is generated from a rabbit immunized with a KLH conjugated synthetic peptide between 522-556 amino acids from the C-terminal region of human ALDH4A1.

**Format**

Purified polyclonal antibody supplied in PBS with 0.09% (W/V) sodium azide. This antibody is purified through a protein A column, followed by peptide affinity purification.

**Storage**

Maintain refrigerated at 2-8°C for up to 2 weeks. For long term storage store at -20°C in small aliquots to prevent freeze-thaw cycles.

**Precautions**

ALDH4A1 Antibody (C-term) is for research use only and not for use in diagnostic or therapeutic procedures.

**ALDH4A1 Antibody (C-term) - Protein Information**

**Name** ALDH4A1

**Synonyms** ALDH4, P5CDH

**Function**

Irreversible conversion of delta-1-pyrroline-5-carboxylate (P5C), derived either from proline or ornithine, to glutamate. This is a necessary step in the pathway interconnecting the urea and tricarboxylic acid cycles. The preferred substrate is glutamic gamma- semialdehyde, other substrates include succinic, glutaric and adipic semialdehydes.

**Cellular Location**

Mitochondrion matrix.

**Tissue Location**

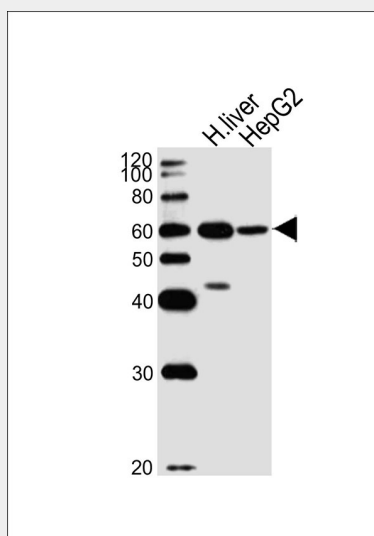
Highest expression is found in liver followed by skeletal muscle, kidney, heart, brain, placenta, lung and pancreas

**ALDH4A1 Antibody (C-term) - Protocols**

Provided below are standard protocols that you may find useful for product applications.

- [Western Blot](#)
- [Blocking Peptides](#)
- [Dot Blot](#)
- [Immunohistochemistry](#)
- [Immunofluorescence](#)
- [Immunoprecipitation](#)
- [Flow Cytometry](#)
- [Cell Culture](#)

**ALDH4A1 Antibody (C-term) - Images**



Western blot analysis of lysates from human liver tissue lysate, HepG2 cell line (from left to right), using ALDH4A1 Antibody (C-term) (Cat. #AW5317). AW5317 was diluted at 1:1000 at each lane. A goat anti-rabbit IgG H&L (HRP) at 1:10000 dilution was used as the secondary antibody. Lysates at 20ug per lane.

**ALDH4A1 Antibody (C-term) - Background**

Irreversible conversion of delta-1-pyrroline-5- carboxylate (P5C), derived either from proline or ornithine, to glutamate. This is a necessary step in the pathway interconnecting the urea and tricarboxylic acid cycles. The preferred substrate is glutamic gamma-semialdehyde, other substrates include succinic, glutaric and adipic semialdehydes.

**ALDH4A1 Antibody (C-term) - References**

Hu C.-A.,et al.J. Biol. Chem. 271:9795-9800(1996).  
Stagos D.,et al.Submitted (NOV-2008) to the EMBL/GenBank/DDBJ databases.  
Ota T.,et al.Nat. Genet. 36:40-45(2004).  
Suzuki Y.,et al.Submitted (APR-2005) to the EMBL/GenBank/DDBJ databases.  
Gregory S.G.,et al.Nature 441:315-321(2006).