

ASH2L Antibody (Center)
Purified Rabbit Polyclonal Antibody (Pab)
Catalog # AW5312

Specification

ASH2L Antibody (Center) - Product Information

Application	WB,E
Primary Accession	O9UBL3
Other Accession	O91X20
Reactivity	Human, Mouse
Host	Rabbit
Clonality	Polyclonal
Calculated MW	H=69, 56, 60;M=68 KDa
Isotype	Rabbit IgG
Antigen Source	HUMAN

ASH2L Antibody (Center) - Additional Information

Gene ID 9070

Antigen Region
237-270

Other Names

Set1/Ash2 histone methyltransferase complex subunit ASH2, ASH2-like protein, ASH2L, ASH2L1

Dilution

WB~~1:1000

Target/Specificity

This ASH2L antibody is generated from a rabbit immunized with a KLH conjugated synthetic peptide between 237-270 amino acids from the Central region of human ASH2L.

Format

Purified polyclonal antibody supplied in PBS with 0.09% (W/V) sodium azide. This antibody is purified through a protein A column, followed by peptide affinity purification.

Storage

Maintain refrigerated at 2-8°C for up to 2 weeks. For long term storage store at -20°C in small aliquots to prevent freeze-thaw cycles.

Precautions

ASH2L Antibody (Center) is for research use only and not for use in diagnostic or therapeutic procedures.

ASH2L Antibody (Center) - Protein Information

Name ASH2L

Synonyms ASH2L1

Function

Transcriptional regulator (PubMed:12670868). Component or associated component of some histone methyltransferase complexes which regulates transcription through recruitment of those complexes to gene promoters (PubMed:19131338). Component of the Set1/Ash2 histone methyltransferase (HMT) complex, a complex that specifically methylates 'Lys-4' of histone H3, but not if the neighboring 'Lys-9' residue is already methylated (PubMed:19556245). As part of the MLL1/MLL complex it is involved in methylation and dimethylation at 'Lys-4' of histone H3 (PubMed:19556245). May play a role in hematopoiesis (PubMed:12670868). In association with RBBP5 and WDR5, stimulates the histone methyltransferase activities of KMT2A, KMT2B, KMT2C, KMT2D, SETD1A and SETD1B (PubMed:21220120, PubMed:22266653).

Cellular Location

Nucleus.

Tissue Location

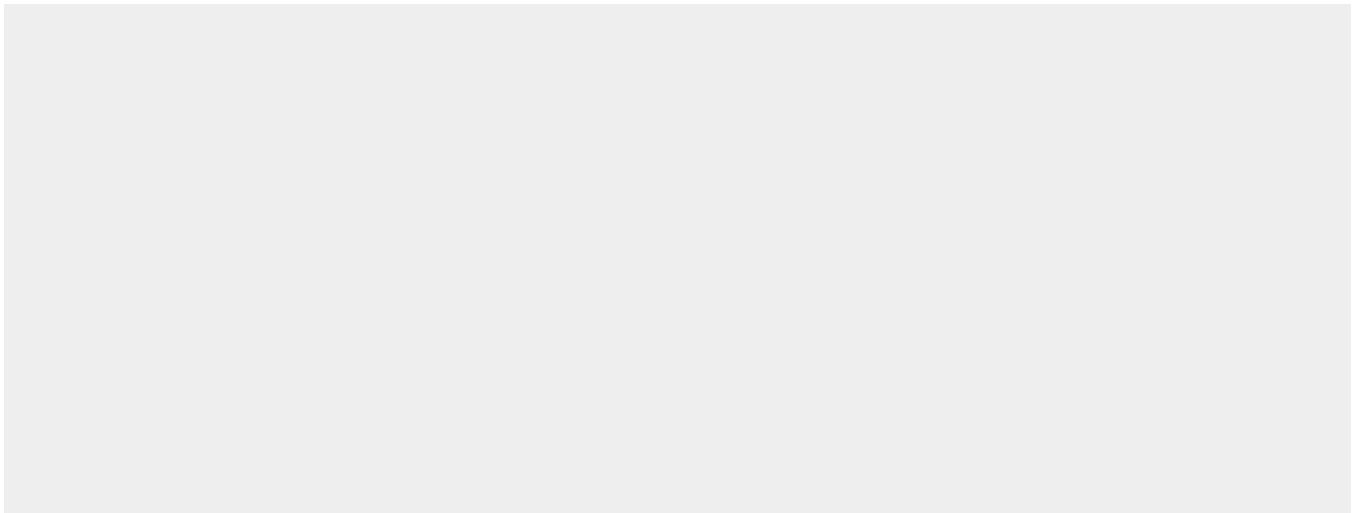
Ubiquitously expressed. Predominantly expressed in adult heart and testis and fetal lung and liver, with barely detectable expression in adult lung, liver, kidney, prostate, and peripheral leukocytes.

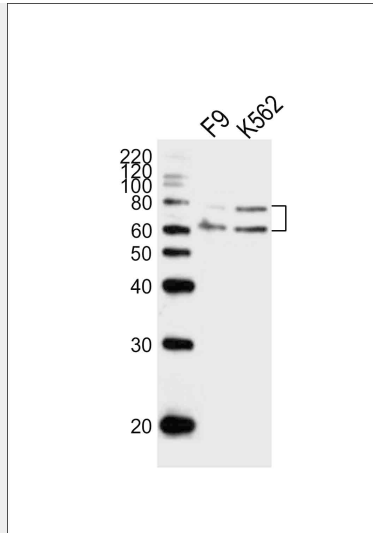
ASH2L Antibody (Center) - Protocols

Provided below are standard protocols that you may find useful for product applications.

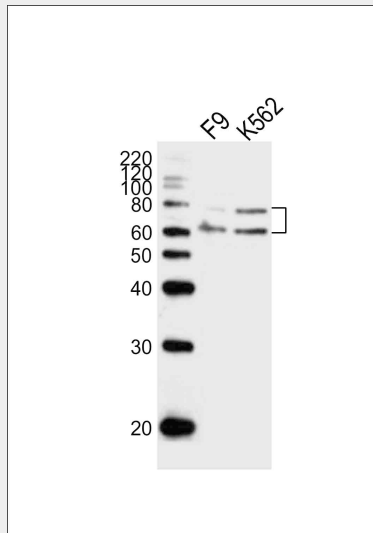
- [Western Blot](#)
- [Blocking Peptides](#)
- [Dot Blot](#)
- [Immunohistochemistry](#)
- [Immunofluorescence](#)
- [Immunoprecipitation](#)
- [Flow Cytometry](#)
- [Cell Culture](#)

ASH2L Antibody (Center) - Images





Western blot analysis of lysates from mouse F9,K562 cell line (from left to right), using ASH2L Antibody (Center)(Cat. #AW5312). AW5312 was diluted at 1:1000 at each lane. A goat anti-rabbit IgG H&L(HRP) at 1:10000 dilution was used as the secondary antibody.Lysates at 20ug per lane.



Western blot analysis of lysates from mouse F9,K562 cell line (from left to right), using ASH2L Antibody (Center)(Cat. #AW5312). AW5312 was diluted at 1:1000 at each lane. A goat anti-rabbit IgG H&L(HRP) at 1:10000 dilution was used as the secondary antibody.Lysates at 20ug per lane.

ASH2L Antibody (Center) - Background

Component of the Set1/Ash2 histone methyltransferase (HMT) complex, a complex that specifically methylates 'Lys-4' of histone H3, but not if the neighboring 'Lys-9' residue is already methylated. As part of the MLL1/MLL complex it is involved in methylation and dimethylation at 'Lys-4' of histone H3. May function as a transcriptional regulator. May play a role in hematopoiesis.

ASH2L Antibody (Center) - References

- Wang J.,et al.J. Mol. Med. 79:399-405(2001).
- Ikegawa S.,et al.Cytogenet. Cell Genet. 84:167-172(1999).
- Ota T.,et al.Nat. Genet. 36:40-45(2004).
- Mural R.J.,et al.Submitted (SEP-2005) to the EMBL/GenBank/DDBJ databases.
- Wysocka J.,et al.Genes Dev. 17:896-911(2003).