

PPP2R1B Antibody (N-term)
Purified Rabbit Polyclonal Antibody (Pab)
Catalog # AW5311

Specification

PPP2R1B Antibody (N-term) - Product Information

Application	WB,E
Primary Accession	P30154
Reactivity	Human
Host	Rabbit
Clonality	Polyclonal
Calculated MW	H=66, 74, 61, 52, 67 KDa
Isotype	Rabbit IgG
Antigen Source	HUMAN

PPP2R1B Antibody (N-term) - Additional Information

Gene ID 5519

Antigen Region
5~37

Other Names

Serine/threonine-protein phosphatase 2A 65 kDa regulatory subunit A beta isoform, PP2A subunit A isoform PR65-beta, PP2A subunit A isoform R1-beta, PPP2R1B

Dilution

WB~~1:1000

Target/Specificity

This PPP2R1B antibody is generated from a rabbit immunized with a KLH conjugated synthetic peptide between 5~37 amino acids from the N-terminal region of human PPP2R1B.

Format

Purified polyclonal antibody supplied in PBS with 0.09% (W/V) sodium azide. This antibody is purified through a protein A column, followed by peptide affinity purification.

Storage

Maintain refrigerated at 2-8°C for up to 2 weeks. For long term storage store at -20°C in small aliquots to prevent freeze-thaw cycles.

Precautions

PPP2R1B Antibody (N-term) is for research use only and not for use in diagnostic or therapeutic procedures.

PPP2R1B Antibody (N-term) - Protein Information

Name PPP2R1B

Function

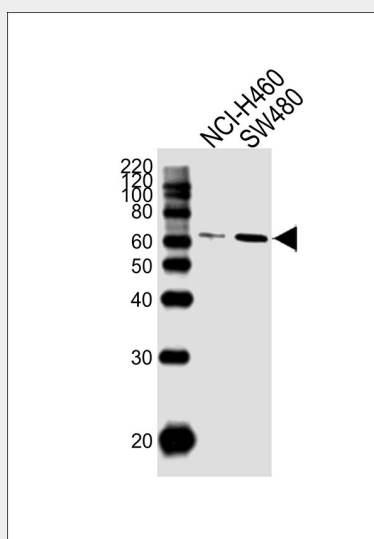
The PR65 subunit of protein phosphatase 2A serves as a scaffolding molecule to coordinate the assembly of the catalytic subunit and a variable regulatory B subunit.

PPP2R1B Antibody (N-term) - Protocols

Provided below are standard protocols that you may find useful for product applications.

- [Western Blot](#)
- [Blocking Peptides](#)
- [Dot Blot](#)
- [Immunohistochemistry](#)
- [Immunofluorescence](#)
- [Immunoprecipitation](#)
- [Flow Cytometry](#)
- [Cell Culture](#)

PPP2R1B Antibody (N-term) - Images



Western blot analysis of lysates from NCI-H460, SW480 cell line (from left to right), using PPP2R1B Antibody (N-term) (Cat. #AW5311). AW5311 was diluted at 1:1000 at each lane. A goat anti-rabbit IgG H&L (HRP) at 1:10000 dilution was used as the secondary antibody. Lysates at 20ug per lane.

PPP2R1B Antibody (N-term) - Background

The PR65 subunit of protein phosphatase 2A serves as a scaffolding molecule to coordinate the assembly of the catalytic subunit and a variable regulatory B subunit.

PPP2R1B Antibody (N-term) - References

- Baysal B.E., et al. *Gene* 217:107-116(1998).
Wang S.S., et al. *Science* 282:284-287(1998).
Baysal B.E., et al. *Eur. J. Hum. Genet.* 9:121-129(2001).
Ota T., et al. *Nat. Genet.* 36:40-45(2004).
Taylor T.D., et al. *Nature* 440:497-500(2006).