

**STAT5b Antibody (C-term)**  
**Purified Rabbit Polyclonal Antibody (Pab)**  
**Catalog # AW5290**

**Specification**

---

**STAT5b Antibody (C-term) - Product Information**

Application	WB,E
Primary Accession	<a href="#">P51692</a>
Other Accession	<a href="#">P52632</a> , <a href="#">Q9TUZ0</a> , <a href="#">P42232</a> , <a href="#">Q9TUM3</a>
Reactivity	Human, Rat
Predicted	Bovine, Mouse, Pig
Host	Rabbit
Clonality	Polyclonal
Calculated MW	H=90 M=90 Rat=90 KDa
Isotype	Rabbit IgG
Antigen Source	HUMAN

**STAT5b Antibody (C-term) - Additional Information**

**Gene ID** 6777

**Antigen Region**  
760-787

**Other Names**  
STAT5B; Signal transducer and activator of transcription 5B

**Dilution**  
WB~~1:1000

**Target/Specificity**  
This STAT5b antibody is generated from rabbits immunized with a KLH conjugated synthetic peptide between 760-787 amino acids from the C-terminal region of human STAT5b.

**Format**  
Purified polyclonal antibody supplied in PBS with 0.09% (W/V) sodium azide. This antibody is prepared by Saturated Ammonium Sulfate (SAS) precipitation followed by dialysis against PBS.

**Storage**  
Maintain refrigerated at 2-8°C for up to 2 weeks. For long term storage store at -20°C in small aliquots to prevent freeze-thaw cycles.

**Precautions**  
STAT5b Antibody (C-term) is for research use only and not for use in diagnostic or therapeutic procedures.

**STAT5b Antibody (C-term) - Protein Information**

**Name** STAT5B**Function**

Carries out a dual function: signal transduction and activation of transcription (PubMed:<a href="http://www.uniprot.org/citations/29844444" target="\_blank">29844444</a>). Mediates cellular responses to the cytokine KITLG/SCF and other growth factors. Binds to the GAS element and activates PRL-induced transcription. Positively regulates hematopoietic/erythroid differentiation.

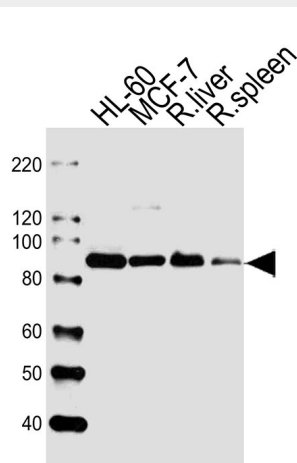
**Cellular Location**

Cytoplasm. Nucleus. Note=Translocated into the nucleus in response to phosphorylation.

**STAT5b Antibody (C-term) - Protocols**

Provided below are standard protocols that you may find useful for product applications.

- [Western Blot](#)
- [Blocking Peptides](#)
- [Dot Blot](#)
- [Immunohistochemistry](#)
- [Immunofluorescence](#)
- [Immunoprecipitation](#)
- [Flow Cytometry](#)
- [Cell Culture](#)

**STAT5b Antibody (C-term) - Images**

Western blot analysis of lysates from HL-60, MCF-7 cell line, rat liver, rat spleen tissue (from left to right), using STAT5b Antibody (C-term) (Cat. #AW5290). AW5290 was diluted at 1:1000 at each lane. A goat anti-rabbit IgG H&L (HRP) at 1:10000 dilution was used as the secondary antibody.

**STAT5b Antibody (C-term) - Background**

STAT5b is a member of the STAT family of transcription factors. In response to cytokines and growth factors, STAT family members are phosphorylated by the receptor associated kinases, and then form homo- or heterodimers that translocate to the cell nucleus where they act as transcription activators. This protein mediates the signal transduction triggered by various cell

ligands, such as IL2, IL4, CSF1, and different growth hormones. It has been shown to be involved in diverse biological processes, such as TCR signaling, apoptosis, adult mammary gland development, and sexual dimorphism of liver gene expression. This gene was found to fuse to retinoic acid receptor-alpha (RARA) gene in a small subset of acute promyelocytic leukemias (APLL). The dysregulation of the signaling pathways mediated by this protein may be the cause of the APLL.

#### **STAT5b Antibody (C-term) - References**

- Xi, S., et al., *Cancer Res.* 63(20):6763-6771 (2003).  
Uddin, S., et al., *Biochem. Biophys. Res. Commun.* 308(2):325-330 (2003).  
Zhang, X., et al., *J. Allergy Clin. Immunol.* 112(1):93-101 (2003).  
Yamashita, H., et al., *Oncogene* 22(11):1638-1652 (2003).  
Kloth, M.T., et al., *J. Biol. Chem.* 278(3):1671-1679 (2003).