

**ESR2 Antibody (Center)**  
**Purified Rabbit Polyclonal Antibody (Pab)**  
**Catalog # AW5289**

**Specification**

---

**ESR2 Antibody (Center) - Product Information**

Application	WB, FC,E
Primary Accession	<a href="#">Q92731</a>
Other Accession	<a href="#">Q62986</a> , <a href="#">Q9XSW2</a> , <a href="#">Q9PTU5</a> , <a href="#">Q9XSB5</a> , <a href="#">Q9TU15</a>
Reactivity	Human
Predicted	Bovine, Chicken, Pig, Rat, Sheep
Host	Rabbit
Clonality	Polyclonal
Calculated MW	H=59,55,36,58,54,53, KDa
Isotype	Rabbit IgG
Antigen Source	HUMAN

**ESR2 Antibody (Center) - Additional Information**

**Gene ID** 2100

**Antigen Region**  
369-397

**Other Names**  
ESR2; ESTRB; NR3A2; Estrogen receptor beta; Nuclear receptor subfamily 3 group A member 2

**Dilution**  
WB~~1:1000  
FC~~1:10~50

**Target/Specificity**  
This ESR2 antibody is generated from rabbits immunized with a KLH conjugated synthetic peptide between 369-397 amino acids from the Central region of human ESR2.

**Format**  
Purified polyclonal antibody supplied in PBS with 0.09% (W/V) sodium azide. This antibody is prepared by Saturated Ammonium Sulfate (SAS) precipitation followed by dialysis against PBS.

**Storage**  
Maintain refrigerated at 2-8°C for up to 2 weeks. For long term storage store at -20°C in small aliquots to prevent freeze-thaw cycles.

**Precautions**  
ESR2 Antibody (Center) is for research use only and not for use in diagnostic or therapeutic procedures.

**ESR2 Antibody (Center) - Protein Information**

## Name ESR2

**Synonyms** ESTRB, NR3A2

### Function

Nuclear hormone receptor. Binds estrogens with an affinity similar to that of ESR1/ER-alpha, and activates expression of reporter genes containing estrogen response elements (ERE) in an estrogen- dependent manner (PubMed:<a href="http://www.uniprot.org/citations/20074560" target="\_blank">20074560</a>).

### Cellular Location

Nucleus {ECO:0000255|PROSITE-ProRule:PRU00407, ECO:0000269|PubMed:19126643, ECO:0000269|PubMed:20074560}

### Tissue Location

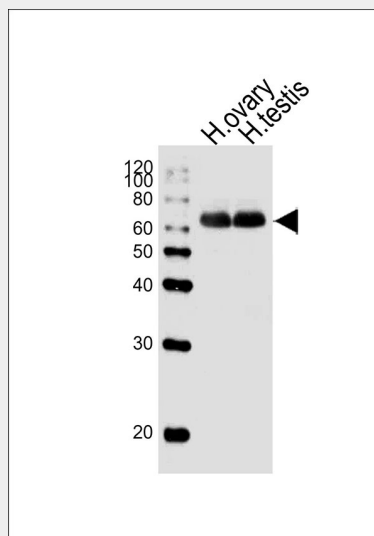
[Isoform 1]: Expressed in testis and ovary, and at a lower level in heart, brain, placenta, liver, skeletal muscle, spleen, thymus, prostate, colon, bone marrow, mammary gland and uterus Also found in uterine bone, breast, and ovarian tumor cell lines, but not in colon and liver tumors. [Isoform 4]: Expressed in the testis. [Isoform 6]: Expressed in testis, placenta, skeletal muscle, spleen and leukocytes, and at a lower level in heart, lung, liver, kidney, pancreas, thymus, prostate, colon, small intestine, bone marrow, mammary gland and uterus. Not expressed in brain.

## ESR2 Antibody (Center) - Protocols

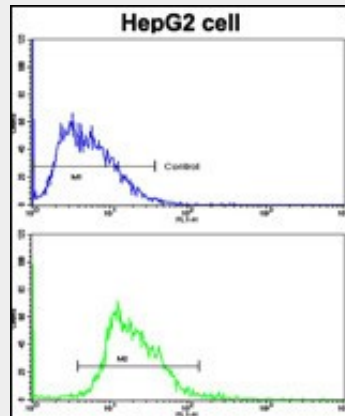
Provided below are standard protocols that you may find useful for product applications.

- [Western Blot](#)
- [Blocking Peptides](#)
- [Dot Blot](#)
- [Immunohistochemistry](#)
- [Immunofluorescence](#)
- [Immunoprecipitation](#)
- [Flow Cytometry](#)
- [Cell Culture](#)

## ESR2 Antibody (Center) - Images



Western blot analysis of lysates from human ovary, human testis tissue lysate (from left to right), using ESR2 Antibody (Center) (Cat. #AW5289). AW5289 was diluted at 1:1000 at each lane. A goat anti-rabbit IgG H&L (HRP) at 1:10000 dilution was used as the secondary antibody.



Flow cytometric analysis of HepG2 cells using ESR2 Antibody (Center) (bottom histogram) compared to a negative control cell (top histogram). FITC-conjugated goat-anti-rabbit secondary antibodies were used for the analysis.

#### **ESR2 Antibody (Center) - Background**

ESR2 is a nuclear hormone receptor. The protein binds estrogens with an affinity similar to that of ESR1, and activates expression of reporter genes containing estrogen response elements (ERE) in an estrogen-dependent manner.

#### **ESR2 Antibody (Center) - References**

- Chen H., Lin R.J. Cell 90:569-580(1997)
- Caira F., Antonson P.J. Biol. Chem. 275:5308-5317(2000)
- Bu H., Kashireddy P. Biochem. Biophys. Res. Commun. 317:54-59(2004)