

BBS5 Antibody (Center)
Purified Rabbit Polyclonal Antibody (Pab)
Catalog # AW5288

Specification

BBS5 Antibody (Center) - Product Information

Application	WB,E
Primary Accession	Q8N3I7
Other Accession	Q9CZQ9 , Q4R649
Reactivity	Human
Predicted	Monkey, Mouse
Host	Rabbit
Clonality	Polyclonal
Calculated MW	H=39,36;M=39 KDa
Isotype	Rabbit IgG
Antigen Source	HUMAN

BBS5 Antibody (Center) - Additional Information

Gene ID 129880

Antigen Region
108-141

Other Names
Bardet-Biedl syndrome 5 protein, BBS5

Dilution
WB~~1:1000

Target/Specificity
This BBS5 antibody is generated from a rabbit immunized with a KLH conjugated synthetic peptide between 108-141 amino acids from the Central region of human BBS5.

Format
Purified polyclonal antibody supplied in PBS with 0.09% (W/V) sodium azide. This antibody is purified through a protein A column, followed by peptide affinity purification.

Storage
Maintain refrigerated at 2-8°C for up to 2 weeks. For long term storage store at -20°C in small aliquots to prevent freeze-thaw cycles.

Precautions
BBS5 Antibody (Center) is for research use only and not for use in diagnostic or therapeutic procedures.

BBS5 Antibody (Center) - Protein Information

Name BBS5**Function**

The BBSome complex is thought to function as a coat complex required for sorting of specific membrane proteins to the primary cilia. The BBSome complex is required for ciliogenesis but is dispensable for centriolar satellite function. This ciliogenic function is mediated in part by the Rab8 GDP/GTP exchange factor, which localizes to the basal body and contacts the BBSome. Rab8(GTP) enters the primary cilium and promotes extension of the ciliary membrane. Firstly the BBSome associates with the ciliary membrane and binds to RAB31P/Rabin8, the guanosyl exchange factor (GEF) for Rab8 and then the Rab8-GTP localizes to the cilium and promotes docking and fusion of carrier vesicles to the base of the ciliary membrane. The BBSome complex, together with the LTZL1, controls SMO ciliary trafficking and contributes to the sonic hedgehog (SHH) pathway regulation. Required for BBSome complex ciliary localization but not for the proper complex assembly.

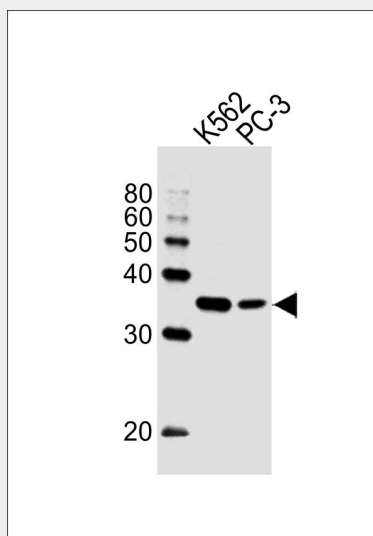
Cellular Location

Cell projection, cilium membrane. Cytoplasm. Cytoplasm, cytoskeleton, cilium basal body. Cytoplasm, cytoskeleton, microtubule organizing center, centrosome, centriolar satellite. Note=Localizes to basal bodies.

BBS5 Antibody (Center) - Protocols

Provided below are standard protocols that you may find useful for product applications.

- [Western Blot](#)
- [Blocking Peptides](#)
- [Dot Blot](#)
- [Immunohistochemistry](#)
- [Immunofluorescence](#)
- [Immunoprecipitation](#)
- [Flow Cytometry](#)
- [Cell Culture](#)

BBS5 Antibody (Center) - Images

Western blot analysis of lysates from K562,PC-3 cell line (from left to right), using BBS5 Antibody (Center)(Cat. #AW5288). AW5288 was diluted at 1:1000 at each lane. A goat anti-rabbit IgG

H&L(HRP) at 1:10000 dilution was used as the secondary antibody.

BBS5 Antibody (Center) - Background

The BBSome complex is thought to function as a coat complex required for sorting of specific membrane proteins to the primary cilia. The BBSome complex is required for ciliogenesis but is dispensable for centriolar satellite function. This ciliogenic function is mediated in part by the Rab8 GDP/GTP exchange factor, which localizes to the basal body and contacts the BBSome. Rab8(GTP) enters the primary cilium and promotes extension of the ciliary membrane. Firstly the BBSome associates with the ciliary membrane and binds to RAB3IP/Rabin8, the guanosyl exchange factor (GEF) for Rab8 and then the Rab8-GTP localizes to the cilium and promotes docking and fusion of carrier vesicles to the base of the ciliary membrane. The BBSome complex, together with the LTZL1, controls SMO ciliary trafficking and contributes to the sonic hedgehog (SHH) pathway regulation. Required for BBSome complex ciliary localization but not for the proper complex assembly.

BBS5 Antibody (Center) - References

- Li J.B.,et al.Cell 117:541-552(2004).
- Bechtel S.,et al.BMC Genomics 8:399-399(2007).
- Hillier L.W.,et al.Nature 434:724-731(2005).
- Mural R.J.,et al.Submitted (SEP-2005) to the EMBL/GenBank/DDBJ databases.
- Badano J.L.,et al.Nature 439:326-330(2006).