

DNAAF8 Antibody (Center)
Affinity Purified Rabbit Polyclonal Antibody (Pab)
Catalog # AW5285

Specification

DNAAF8 Antibody (Center) - Product Information

Application	WB,E
Primary Accession	Q8IYS4
Reactivity	Human
Host	Rabbit
Clonality	Polyclonal
Calculated MW	H= 56 KDa
Isotype	Rabbit IgG
Antigen Source	Human

DNAAF8 Antibody (Center) - Additional Information

Gene ID 146562

Antigen Region
320-348

Other Names
Uncharacterized protein C16orf71;Uncharacterized protein C16orf71

Dilution
WB~~1:1000

Target/Specificity
This C16orf71 antibody is generated from rabbits immunized with a KLH conjugated synthetic peptide between 320-348 amino acids from the Central region of human C16orf71.

Format
Purified polyclonal antibody supplied in PBS with 0.09% (W/V) sodium azide. This antibody is purified through a protein A column, followed by peptide affinity purification.

Storage
Maintain refrigerated at 2-8°C for up to 2 weeks. For long term storage store at -20°C in small aliquots to prevent freeze-thaw cycles.

Precautions
DNAAF8 Antibody (Center) is for research use only and not for use in diagnostic or therapeutic procedures.

DNAAF8 Antibody (Center) - Protein Information

Name DNAAF8 ([HGNC:25081](#))

Function

In ciliated cells, dynein axonemal particle-specific protein required for deployment of ODA to the axoneme. Interacts with outer dynein arm (ODA) subunits.

Cellular Location

Dynein axonemal particle

Tissue Location

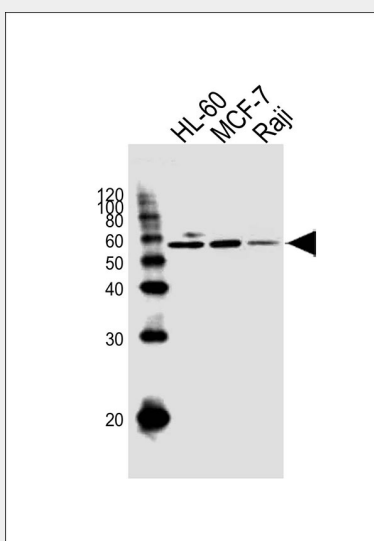
Expressed in respiratory ciliated cells (at protein level).

DNAAF8 Antibody (Center) - Protocols

Provided below are standard protocols that you may find useful for product applications.

- [Western Blot](#)
- [Blocking Peptides](#)
- [Dot Blot](#)
- [Immunohistochemistry](#)
- [Immunofluorescence](#)
- [Immunoprecipitation](#)
- [Flow Cytometry](#)
- [Cell Culture](#)

DNAAF8 Antibody (Center) - Images



Western blot analysis of lysates from HL-60, MCF-7, Raji cell line (from left to right), using C16orf71 Antibody (Center) (Cat. #AW5285). AW5285 was diluted at 1:1000 at each lane. A goat anti-rabbit IgG H&L(HRP) at 1:10000 dilution was used as the secondary antibody.

DNAAF8 Antibody (Center) - Background

The exact function of C16orf71 remains unknown.

DNAAF8 Antibody (Center) - References

Martin J., et al. Nature 432:988-994(2004).
Guo J.H., et al. Submitted (OCT-2001) to the EMBL/GenBank/DDBJ databases.