

C1GALT1 Antibody (Center)
Affinity Purified Rabbit Polyclonal Antibody (Pab)
Catalog # AW5281

Specification

C1GALT1 Antibody (Center) - Product Information

Application	WB,E
Primary Accession	O9NS00
Reactivity	Human
Predicted	Rat
Host	Rabbit
Clonality	Polyclonal
Calculated MW	H=42,36;M=42;Rat=42 KDa
Isotype	Rabbit IgG
Antigen Source	Human

C1GALT1 Antibody (Center) - Additional Information

Gene ID 56913

Antigen Region
115-144

Other Names

Glycoprotein-N-acetylgalactosamine 3-beta-galactosyltransferase 1; Glycoprotein-N-acetylgalactosamine 3-beta-galactosyltransferase 1; Glycoprotein-N-acetylgalactosamine 3-beta-galactosyltransferase 1; B3Gal-T8; Glycoprotein-N-acetylgalactosamine 3-beta-galactosyltransferase 1; Core 1 O-glycan T-synthase; Glycoprotein-N-acetylgalactosamine 3-beta-galactosyltransferase 1; Core 1 UDP-galactose:N-acetylgalactosamine-alpha-R beta 1, 3-galactosyltransferase 1; Glycoprotein-N-acetylgalactosamine 3-beta-galactosyltransferase 1; Core 1 beta1, 3-galactosyltransferase 1

Dilution

WB~~1:1000

Target/Specificity

This C1GALT1 antibody is generated from rabbits immunized with a KLH conjugated synthetic peptide between 115-144 amino acids from the Central region of human C1GALT1.

Format

Purified polyclonal antibody supplied in PBS with 0.09% (W/V) sodium azide. This antibody is purified through a protein A column, followed by peptide affinity purification.

Storage

Maintain refrigerated at 2-8°C for up to 2 weeks. For long term storage store at -20°C in small aliquots to prevent freeze-thaw cycles.

Precautions

C1GALT1 Antibody (Center) is for research use only and not for use in diagnostic or therapeutic

procedures.

C1GALT1 Antibody (Center) - Protein Information

Name C1GALT1

Function

Glycosyltransferase that generates the core 1 O-glycan Gal- beta1-3GalNAc-alpha1-Ser/Thr (T antigen), which is a precursor for many extended O-glycans in glycoproteins (PubMed:11677243). Plays a central role in many processes, such as angiogenesis, thrombopoiesis and kidney homeostasis development (By similarity).

Cellular Location

Membrane {ECO:0000250|UniProtKB:Q9JJ05}; Single- pass type II membrane protein

Tissue Location

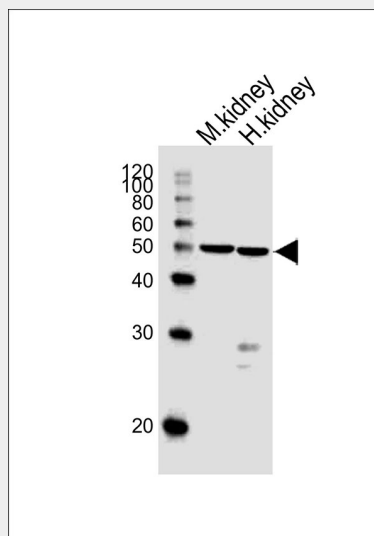
Widely expressed. Highly expressed in kidney, heart, placenta and liver.

C1GALT1 Antibody (Center) - Protocols

Provided below are standard protocols that you may find useful for product applications.

- [Western Blot](#)
- [Blocking Peptides](#)
- [Dot Blot](#)
- [Immunohistochemistry](#)
- [Immunofluorescence](#)
- [Immunoprecipitation](#)
- [Flow Cytometry](#)
- [Cell Culture](#)

C1GALT1 Antibody (Center) - Images



Western blot analysis of lysates from mouse kidney and human kidney tissue (from left to right),

using C1GALT1 Antibody (Center)(Cat. #AW5281). AW5281 was diluted at 1:1000 at each lane. A goat anti-rabbit IgG H&L(HRP) at 1:10000 dilution was used as the secondary antibody.

C1GALT1 Antibody (Center) - Background

Glycosyltransferase that generates the core 1 O-glycan Gal-beta1-3GalNAc-alpha1-Ser/Thr (T antigen), which is a precursor for many extended O-glycans in glycoproteins. Plays a central role in many processes, such as angiogenesis, thrombopoiesis and kidney homeostasis development.

C1GALT1 Antibody (Center) - References

- Ju T., et al. J. Biol. Chem. 277:178-186(2002).
Jensen M.P.A., et al. Submitted (JUN-1999) to the EMBL/GenBank/DDBJ databases.
Hillier L.W., et al. Nature 424:157-164(2003).
Scherer S.W., et al. Science 300:767-772(2003).
Ju T., et al. Proc. Natl. Acad. Sci. U.S.A. 99:16613-16618(2002).