

NR2F1 Antibody (N-term)
Affinity Purified Rabbit Polyclonal Antibody (Pab)
Catalog # AW5262

Specification

NR2F1 Antibody (N-term) - Product Information

Application	WB,E
Primary Accession	P10589
Other Accession	Q9TTR8 , NP_005645.1
Reactivity	Human, Mouse
Predicted	Bovine
Host	Rabbit
Clonality	Polyclonal
Calculated MW	H=46;M=46 KDa
Isotype	Rabbit IgG
Antigen Source	HUMAN

NR2F1 Antibody (N-term) - Additional Information

Gene ID 7025

Antigen Region
48-76

Other Names

NR2F1; EAR3; ERBAL3; TFCOUP1; COUP transcription factor 1; COUP transcription factor I; Nuclear receptor subfamily 2 group F member 1; V-erbA-related protein 3

Dilution

WB~~ 1:1000

Target/Specificity

This NR2F1 antibody is generated from rabbits immunized with a KLH conjugated synthetic peptide between 48-76 amino acids from the N-terminal region of human NR2F1.

Format

Purified polyclonal antibody supplied in PBS with 0.09% (W/V) sodium azide. This antibody is purified through a protein A column, followed by peptide affinity purification.

Storage

Maintain refrigerated at 2-8°C for up to 2 weeks. For long term storage store at -20°C in small aliquots to prevent freeze-thaw cycles.

Precautions

NR2F1 Antibody (N-term) is for research use only and not for use in diagnostic or therapeutic procedures.

NR2F1 Antibody (N-term) - Protein Information

Name NR2F1

Synonyms EAR3, ERBAL3, TFCOUP1

Function

Coup (chicken ovalbumin upstream promoter) transcription factor binds to the ovalbumin promoter and, in conjunction with another protein (S300-II) stimulates initiation of transcription. Binds to both direct repeats and palindromes of the 5'-AGGTCA-3' motif. Represses transcriptional activity of LHCG.

Cellular Location

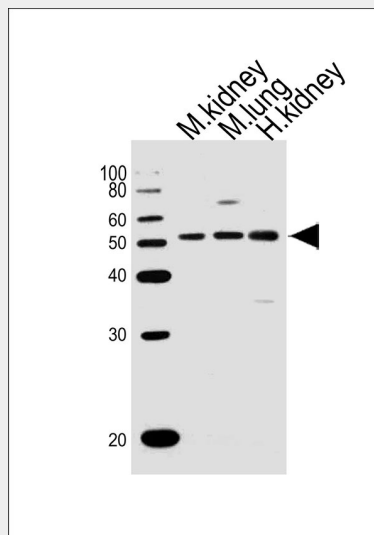
Nucleus.

NR2F1 Antibody (N-term) - Protocols

Provided below are standard protocols that you may find useful for product applications.

- [Western Blot](#)
- [Blocking Peptides](#)
- [Dot Blot](#)
- [Immunohistochemistry](#)
- [Immunofluorescence](#)
- [Immunoprecipitation](#)
- [Flow Cytometry](#)
- [Cell Culture](#)

NR2F1 Antibody (N-term) - Images



Western blot analysis of lysates from mouse kidney, mouse lung, human kidney tissue lysate (from left to right), using NR2F1 Antibody (N-term) (Cat. #AW5262). AW5262 was diluted at 1:1000 at each lane. A goat anti-rabbit IgG H&L (HRP) at 1:10000 dilution was used as the secondary antibody.

NR2F1 Antibody (N-term) - Background

Coup (chicken ovalbumin upstream promoter) transcription factor binds to the ovalbumin promoter and, in conjunction with another protein (S300-II) stimulates initiation of transcription. Binds to both

direct repeats and palindromes of the 5'-AGGTCA-3' motif. Represses transcriptional activity of LHCG.

NR2F1 Antibody (N-term) - References

- Davis, O.S., et al. Behav. Genet. (2010) In press :
Dai, K., et al. Arterioscler. Thromb. Vasc. Biol. 30(3):568-574(2010)
Montemayor, C., et al. PLoS ONE 5 (1), E8910 (2010) :
Bush, Z.M., et al. Pituitary 13(1):1-7(2010)
Johnson, M.P., et al. Hum. Genet. 126(5):655-666(2009)