

**SOX8 Antibody (Center)**  
**Affinity Purified Rabbit Polyclonal Antibody (Pab)**  
**Catalog # AW5251**

**Specification**

---

**SOX8 Antibody (Center) - Product Information**

Application	WB,E
Primary Accession	<a href="#">P57073</a>
Other Accession	<a href="#">NP_055402.2</a>
Reactivity	Human
Host	Rabbit
Clonality	Polyclonal
Calculated MW	H=47 KDa
Isotype	Rabbit IgG
Antigen Source	HUMAN

**SOX8 Antibody (Center) - Additional Information**

**Gene ID** 30812

**Antigen Region**  
225-253

**Other Names**  
SOX8; Transcription factor SOX-8

**Dilution**  
WB~~ 1:1000

**Target/Specificity**  
This SOX8 antibody is generated from rabbits immunized with a KLH conjugated synthetic peptide between 225-253 amino acids from the Central region of human SOX8.

**Format**  
Purified polyclonal antibody supplied in PBS with 0.09% (W/V) sodium azide. This antibody is purified through a protein A column, followed by peptide affinity purification.

**Storage**  
Maintain refrigerated at 2-8°C for up to 2 weeks. For long term storage store at -20°C in small aliquots to prevent freeze-thaw cycles.

**Precautions**  
SOX8 Antibody (Center) is for research use only and not for use in diagnostic or therapeutic procedures.

**SOX8 Antibody (Center) - Protein Information**

**Name** SOX8 {ECO:0000303|Ref.1, ECO:0000312|HGNC:HGNC:11203}

### Function

Transcription factor that may play a role in central nervous system, limb and facial development. May be involved in male sex determination. Binds the consensus motif 5'-[AT][AT]CAA[AT]G-3' (By similarity).

### Cellular Location

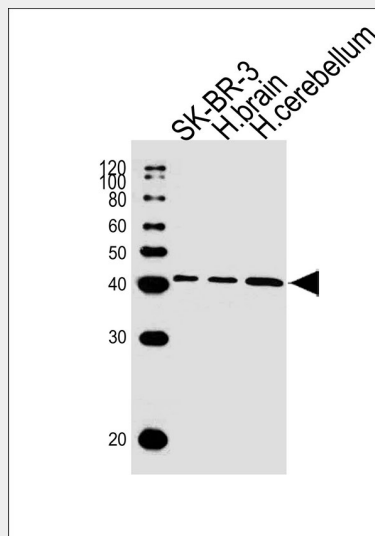
Nucleus {ECO:0000255|PROSITE-ProRule:PRU00267}.

## SOX8 Antibody (Center) - Protocols

Provided below are standard protocols that you may find useful for product applications.

- [Western Blot](#)
- [Blocking Peptides](#)
- [Dot Blot](#)
- [Immunohistochemistry](#)
- [Immunofluorescence](#)
- [Immunoprecipitation](#)
- [Flow Cytometry](#)
- [Cell Culture](#)

## SOX8 Antibody (Center) - Images



Western blot analysis of lysates from SK-BR-3 cell line, human brain, human cerebellum tissue (from left to right), using SOX8 Antibody (Center) (Cat. #AW5251). AW5251 was diluted at 1:1000 at each lane. A goat anti-rabbit IgG H&L (HRP) at 1:10000 dilution was used as the secondary antibody.

## SOX8 Antibody (Center) - Background

This gene encodes a member of the SOX (SRY-related HMG-box) family of transcription factors involved in the regulation of embryonic development and in the determination of the cell fate. The encoded protein may act as a transcriptional activator after forming a protein complex with other proteins. This protein may be involved in brain development and function. Haploinsufficiency for this protein may contribute to the mental retardation found in

haemoglobin H-related mental retardation (ART-16 syndrome).

### **SOX8 Antibody (Center) - References**

- Nonaka, D. Am. J. Clin. Pathol. 131(5):731-736(2009)  
Hoff, S., et al. J. Comp. Neurol. 509(4):356-371(2008)  
Wissmuller, S., et al. Nucleic Acids Res. 34(6):1735-1744(2006)  
Schepers, G., et al. J. Biol. Chem. 278(30):28101-28108(2003)  
Gevaert, K., et al. Nat. Biotechnol. 21(5):566-569(2003)