

**CAPN1 Antibody**  
**Purified Mouse Monoclonal Antibody (Mab)**  
**Catalog # AW5228**

**Specification**

---

**CAPN1 Antibody - Product Information**

Application	<b>WB, IHC-P, FC,E</b>
Primary Accession	<a href="#">P07384</a>
Reactivity	<b>Human</b>
Host	<b>Mouse</b>
Clonality	<b>Monoclonal</b>
Calculated MW	<b>H=82 KDa</b>
Isotype	<b>IgG1,k</b>
Antigen Source	<b>HUMAN</b>

**CAPN1 Antibody - Additional Information**

**Gene ID** 823

**Other Names**

Calpain-1 catalytic subunit, Calcium-activated neutral proteinase 1, CANP 1, Calpain mu-type, Calpain-1 large subunit, Cell proliferation-inducing gene 30 protein, Micromolar-calpain, muCANP, CAPN1, CANPL1

**Dilution**

WB~~1:1000  
IHC-P~~1:25  
FC~~1:25

**Target/Specificity**

This CAPN1 antibody is generated from a mouse immunized with a KLH conjugated synthetic peptide between amino acids from the human region of human CAPN1.

**Format**

Purified monoclonal antibody supplied in PBS with 0.09% (W/V) sodium azide. This antibody is purified through a protein G column, followed by dialysis against PBS.

**Storage**

Maintain refrigerated at 2-8°C for up to 2 weeks. For long term storage store at -20°C in small aliquots to prevent freeze-thaw cycles.

**Precautions**

CAPN1 Antibody is for research use only and not for use in diagnostic or therapeutic procedures.

**CAPN1 Antibody - Protein Information**

**Name** CAPN1 ([HGNC:1476](#))

## Synonyms CANPL1

### Function

Calcium-regulated non-lysosomal thiol-protease which catalyzes limited proteolysis of substrates involved in cytoskeletal remodeling and signal transduction (PubMed:<a href="http://www.uniprot.org/citations/19617626" target="\_blank">19617626</a>, PubMed:<a href="http://www.uniprot.org/citations/21531719" target="\_blank">21531719</a>, PubMed:<a href="http://www.uniprot.org/citations/2400579" target="\_blank">2400579</a>). Proteolytically cleaves CTBP1 at 'Asn-375', 'Gly-387' and 'His-409' (PubMed:<a href="http://www.uniprot.org/citations/23707407" target="\_blank">23707407</a>). Cleaves and activates caspase-7 (CASP7) (PubMed:<a href="http://www.uniprot.org/citations/19617626" target="\_blank">19617626</a>).

### Cellular Location

Cytoplasm. Cell membrane. Note=Translocates to the plasma membrane upon Ca(2+) binding. In granular keratinocytes and in lower corneocytes, colocalizes with FLG and FLG2 (PubMed:21531719)

### Tissue Location

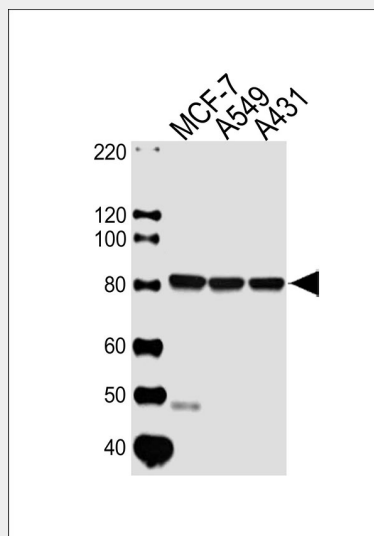
Ubiquitous.

## CAPN1 Antibody - Protocols

Provided below are standard protocols that you may find useful for product applications.

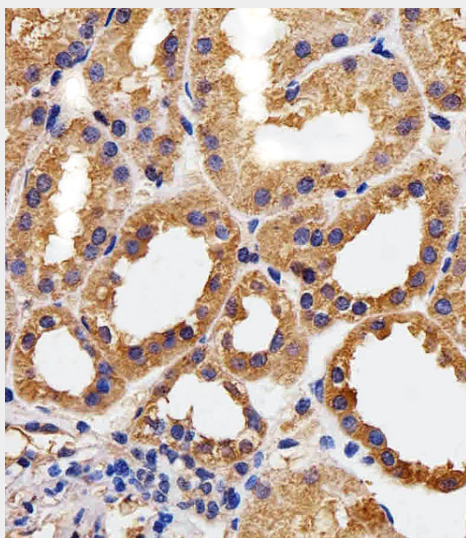
- [Western Blot](#)
- [Blocking Peptides](#)
- [Dot Blot](#)
- [Immunohistochemistry](#)
- [Immunofluorescence](#)
- [Immunoprecipitation](#)
- [Flow Cytometry](#)
- [Cell Culture](#)

## CAPN1 Antibody - Images

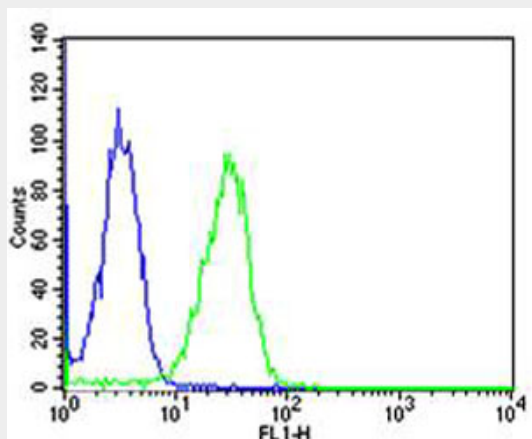


Western blot analysis of lysates from MCF-7, A549, A431 cell line (from left to right), using CAPN1

Antibody(Cat. #AW5228). AW5228 was diluted at 1:1000 at each lane. A goat anti-mouse IgG H&L(HRP) at 1:10000 dilution was used as the secondary antibody.



Immunohistochemical analysis of paraffin-embedded H. kidney section using CAPN1 Antibody(Cat#AW5228). AW5228 was diluted at 1:25 dilution. A peroxidase-conjugated goat anti-mouse IgG at 1:400 dilution was used as the secondary antibody, followed by DAB staining.



Flow cytometric analysis of Hela cells using CAPN1 Antibody(green, Cat#AW5228) compared to an isotype control of mouse IgG1(blue). AW5228 was diluted at 1:25 dilution. An Alexa Fluor® 488 goat anti-mouse IgG at 1:400 dilution was used as the secondary antibody.

### **CAPN1 Antibody - Background**

Calcium-regulated non-lysosomal thiol-protease which catalyze limited proteolysis of substrates involved in cytoskeletal remodeling and signal transduction.

### **CAPN1 Antibody - References**

- Aoki K.,et al.FEBS Lett. 205:313-317(1986).
- Sorimachi H.,et al.Biol. Chem. Hoppe-Seyler 371:171-176(1990).
- Kim J.W.,et al.Submitted (FEB-2004) to the EMBL/GenBank/DDBJ databases.
- Melloni E.,et al.Biochem. Biophys. Res. Commun. 229:193-197(1996).
- Michetti M.,et al.FEBS Lett. 392:11-15(1996).