

**CYB5R3 Antibody (Center)**  
**Purified Rabbit Polyclonal Antibody (Pab)**  
**Catalog # AW5217**

**Specification**

---

**CYB5R3 Antibody (Center) - Product Information**

|                   |  |
|-------------------|--|
| Application       | WB,E   |
| Primary Accession | <a href="#">P00387</a>   |
| Other Accession   | <a href="#">P20070</a> , <a href="#">P83686</a> , <a href="#">Q9DCN2</a> , <a href="#">Q60HG4</a> , <a href="#">P07514</a> |
| Reactivity        | Human, Rat   |
| Predicted         | Bovine, Monkey, Mouse, Pig   |
| Host              | Rabbit   |
| Clonality         | polyclonal   |
| Calculated MW     | H=34,32,38;M=34,32;Rat=34,35,32 KDa  |
| Isotype           | Rabbit IgG   |
| Antigen Source    | HUMAN  |

**CYB5R3 Antibody (Center) - Additional Information**

**Gene ID** 1727

**Antigen Region**  
111-144

**Other Names**

NADH-cytochrome b5 reductase 3, B5R, Cytochrome b5 reductase, Diaphorase-1, NADH-cytochrome b5 reductase 3 membrane-bound form, NADH-cytochrome b5 reductase 3 soluble form, CYB5R3, DIA1

**Dilution**

WB~~1:1000

**Target/Specificity**

This CYB5R3 antibody is generated from a rabbit immunized with a KLH conjugated synthetic peptide between 111-144 amino acids from the Central region of human CYB5R3

**Format**

Purified polyclonal antibody supplied in PBS with 0.09% (W/V) sodium azide. This antibody is purified through a protein A column, followed by peptide affinity purification.

**Storage**

Maintain refrigerated at 2-8°C for up to 2 weeks. For long term storage store at -20°C in small aliquots to prevent freeze-thaw cycles.

**Precautions**

CYB5R3 Antibody (Center) is for research use only and not for use in diagnostic or therapeutic procedures.

**CYB5R3 Antibody (Center) - Protein Information**

**Name** CYB5R3 ([HGNC:2873](#))

**Synonyms** DIA1

**Function**

Catalyzes the reduction of two molecules of cytochrome b5 using NADH as the electron donor.

**Cellular Location**

[Isoform 1]: Endoplasmic reticulum membrane; Lipid-anchor {ECO:0000250|UniProtKB:P20070}; Cytoplasmic side {ECO:0000250|UniProtKB:P20070}. Mitochondrion outer membrane; Lipid-anchor {ECO:0000250|UniProtKB:P20070}; Cytoplasmic side {ECO:0000250|UniProtKB:P20070}

**Tissue Location**

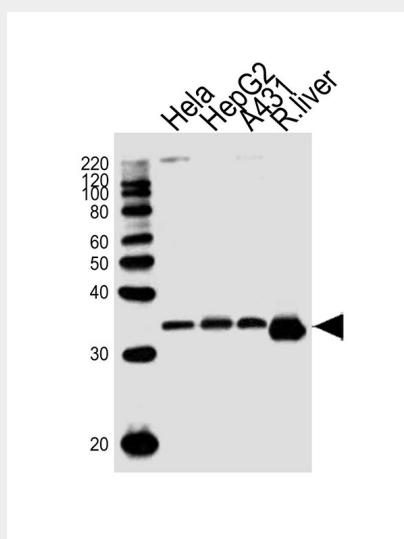
[Isoform 2]: Expressed at late stages of erythroid maturation.

**CYB5R3 Antibody (Center) - Protocols**

Provided below are standard protocols that you may find useful for product applications.

- [Western Blot](#)
- [Blocking Peptides](#)
- [Dot Blot](#)
- [Immunohistochemistry](#)
- [Immunofluorescence](#)
- [Immunoprecipitation](#)

**CYB5R3 Antibody (Center) - Images**



Western blot analysis of lysates from HeLa, HepG2, A431 cell line, rat liver tissue lysate (from left to right), using CYB5R3 (soluble form) Antibody (Center) (Cat. #AW5217). AW5217 was diluted at 1:1000 at each lane. A goat anti-rabbit IgG H&L (HRP) at 1:10000 dilution was used as the secondary antibody.

**CYB5R3 Antibody (Center) - Background**

Desaturation and elongation of fatty acids, cholesterol biosynthesis, drug metabolism, and, in erythrocyte, methemoglobin reduction.

### **CYB5R3 Antibody (Center) - References**

Tomatsu S.,et al.Gene 80:353-361(1989).

Voice M.W.,et al.Submitted (NOV-1996) to the EMBL/GenBank/DDBJ databases.

Yoon B.,et al.Submitted (MAR-2001) to the EMBL/GenBank/DDBJ databases.

Lan F.,et al.Submitted (AUG-1998) to the EMBL/GenBank/DDBJ databases.

Kalnine N.,et al.Submitted (AUG-2003) to the EMBL/GenBank/DDBJ databases.