

**TPT1 Antibody (N-term)**  
**Affinity Purified Rabbit Polyclonal Antibody (Pab)**  
**Catalog # AW5210**

**Specification**

---

**TPT1 Antibody (N-term) - Product Information**

Application	WB,E
Primary Accession	<a href="#">P13693</a>
Other Accession	<a href="#">P61288</a> , <a href="#">NP_003286.1</a>
Reactivity	Human, Mouse, Rat
Host	Rabbit
Clonality	Polyclonal
Calculated MW	H=20,M=19,Rat=19 KDa
Isotype	Rabbit IgG
Antigen Source	HUMAN

**TPT1 Antibody (N-term) - Additional Information**

**Gene ID** 7178

**Antigen Region**  
1-30

**Other Names**  
TPT1; Translationally-controlled tumor protein; Fortilin; Histamine-releasing factor; p23

**Dilution**  
WB~~1:1000

**Target/Specificity**  
This TPT1 antibody is generated from rabbits immunized with a KLH conjugated synthetic peptide between 1-30 amino acids from the N-terminal region of human TPT1.

**Format**  
Purified polyclonal antibody supplied in PBS with 0.09% (W/V) sodium azide. This antibody is purified through a protein A column, followed by peptide affinity purification.

**Storage**  
Maintain refrigerated at 2-8°C for up to 2 weeks. For long term storage store at -20°C in small aliquots to prevent freeze-thaw cycles.

**Precautions**  
TPT1 Antibody (N-term) is for research use only and not for use in diagnostic or therapeutic procedures.

**TPT1 Antibody (N-term) - Protein Information**

**Name** TPT1

### Function

Involved in calcium binding and microtubule stabilization (PubMed:<a href="http://www.uniprot.org/citations/12167714" target="\_blank">12167714</a>, PubMed:<a href="http://www.uniprot.org/citations/15162379" target="\_blank">15162379</a>, PubMed:<a href="http://www.uniprot.org/citations/15958728" target="\_blank">15958728</a>). Acts as a negative regulator of TSC22D1-mediated apoptosis, via interaction with and destabilization of TSC22D1 protein (PubMed:<a href="http://www.uniprot.org/citations/18325344" target="\_blank">18325344</a>).

### Cellular Location

Cytoplasm.

### Tissue Location

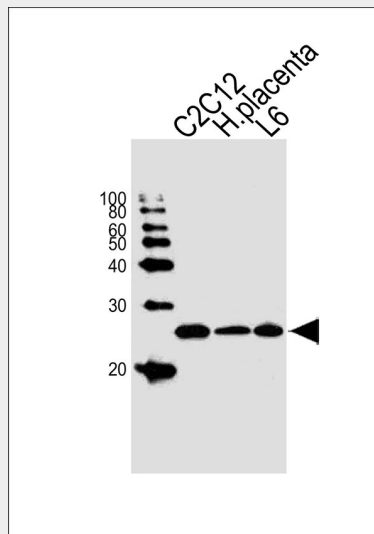
Found in several healthy and tumoral cells including erythrocytes, hepatocytes, macrophages, platelets, keratinocytes, erythroleukemia cells, gliomas, melanomas, hepatoblastomas, and lymphomas. It cannot be detected in kidney and renal cell carcinoma (RCC). Expressed in placenta and prostate

### TPT1 Antibody (N-term) - Protocols

Provided below are standard protocols that you may find useful for product applications.

- [Western Blot](#)
- [Blocking Peptides](#)
- [Dot Blot](#)
- [Immunohistochemistry](#)
- [Immunofluorescence](#)
- [Immunoprecipitation](#)
- [Flow Cytometry](#)
- [Cell Culture](#)

### TPT1 Antibody (N-term) - Images



Western blot analysis of lysates from mouse C2C12 cell line, human placenta tissue lysate, rat L6 cell line (from left to right), using TPT1 Antibody (N-term)(Cat. #AW5210). AW5210 was diluted at 1:1000 at each lane. A goat anti-rabbit IgG H&L(HRP) at 1:10000 dilution was used as the secondary antibody.

**TPT1 Antibody (N-term) - Background**

TPT1 is involved in calcium binding and microtubule stabilization.

**TPT1 Antibody (N-term) - References**

Davila, S., et al. Genes Immun. 11(3):232-238(2010)  
Rid, R., et al. J. Steroid Biochem. Mol. Biol. 118 (1-2), 29-40 (2010) :  
Ma, Q., et al. J. Proteome Res. 9(1):40-49(2010)  
Dong, X., et al. J. Biol. Chem. 284(35):23754-23764(2009)  
Wu, P.S., et al. J. Immunol. 183(4):2373-2381(2009)