

**KLF4 Antibody (N-term)**  
**Purified Rabbit Polyclonal Antibody (Pab)**  
**Catalog # AW5208**

**Specification**

---

**KLF4 Antibody (N-term) - Product Information**

Application	WB,E
Primary Accession	<a href="#">O43474</a>
Other Accession	<a href="#">NP_004226</a>
Reactivity	Human
Host	Rabbit
Clonality	Polyclonal
Calculated MW	H=55,51,46 KDa
Isotype	Rabbit IgG
Antigen Source	HUMAN

**KLF4 Antibody (N-term) - Additional Information**

**Gene ID** 9314

**Antigen Region**  
20-53

**Other Names**  
KLF4; EZF; GKLF; Krueppel-like factor 4; Epithelial zinc finger protein EZF; Gut-enriched krueppel-like factor

**Dilution**  
WB~~1:1000

**Target/Specificity**  
This KLF4 antibody is generated from rabbits immunized with a KLH conjugated synthetic peptide between 20-53 amino acids from the N-terminal region of human KLF4.

**Format**  
Purified polyclonal antibody supplied in PBS with 0.09% (W/V) sodium azide. This antibody is prepared by Saturated Ammonium Sulfate (SAS) precipitation followed by dialysis against PBS.

**Storage**  
Maintain refrigerated at 2-8°C for up to 2 weeks. For long term storage store at -20°C in small aliquots to prevent freeze-thaw cycles.

**Precautions**  
KLF4 Antibody (N-term) is for research use only and not for use in diagnostic or therapeutic procedures.

**KLF4 Antibody (N-term) - Protein Information**

**Name** KLF4 ([HGNC:6348](#))

**Synonyms** EZF, GKLF

**Function**

Transcription factor; can act both as activator and as repressor. Binds the 5'-CACCC-3' core sequence. Binds to the promoter region of its own gene and can activate its own transcription. Regulates the expression of key transcription factors during embryonic development. Plays an important role in maintaining embryonic stem cells, and in preventing their differentiation. Required for establishing the barrier function of the skin and for postnatal maturation and maintenance of the ocular surface. Involved in the differentiation of epithelial cells and may also function in skeletal and kidney development. Contributes to the down-regulation of p53/TP53 transcription.

**Cellular Location**

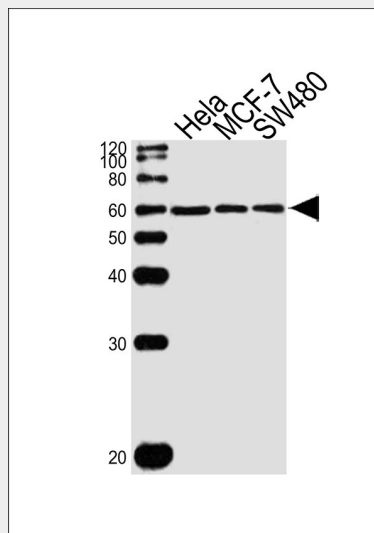
Nucleus {ECO:0000250|UniProtKB:Q60793}. Cytoplasm {ECO:0000250|UniProtKB:Q60793}

**KLF4 Antibody (N-term) - Protocols**

Provided below are standard protocols that you may find useful for product applications.

- [Western Blot](#)
- [Blocking Peptides](#)
- [Dot Blot](#)
- [Immunohistochemistry](#)
- [Immunofluorescence](#)
- [Immunoprecipitation](#)
- [Flow Cytometry](#)
- [Cell Culture](#)

**KLF4 Antibody (N-term) - Images**



Western blot analysis of lysates from HeLa, MCF-7, SW480 cell line (from left to right), using KLF4 Antibody (N-term) (Cat. #AW5208). AW5208 was diluted at 1:1000 at each lane. A goat anti-rabbit IgG H&L (HRP) at 1:10000 dilution was used as the secondary antibody.

**KLF4 Antibody (N-term) - Background**

Kruppel-like factor 4 (KLF4) is a transcription factor involved in both proliferation and differentiation in the colon. It is down-regulated in both mouse and human colonic adenomas and has been implicated as a tumor suppressor in the gut, whereas in breast cancer, KLF4 is an oncogene. KLF4 is also involved in reprogramming differentiated cells into pluripotent stem cells. KLF4 can act as a transcriptional activator or repressor, but the underlying mechanisms are poorly understood.

#### **KLF4 Antibody (N-term) - References**

- Alder, J.K., J. Immunol. 180 (8), 5645-5652 (2008)  
Natesampillai, S., Am. J. Physiol. Endocrinol. Metab. 294 (2), E385-E391 (2008)  
Evans, P.M., J. Biol. Chem. 282 (47), 33994-34002 (2007)  
Behr, R., Mol. Hum. Reprod. 13 (11), 815-820 (2007)