

GRB10 Antibody (N-term)
Affinity Purified Rabbit Polyclonal Antibody (Pab)
Catalog # AW5204

Specification

GRB10 Antibody (N-term) - Product Information

Application	WB,E
Primary Accession	Q13322
Reactivity	Human
Host	Rabbit
Clonality	Polyclonal
Calculated MW	H=67,62,66 KDa
Isotype	Rabbit IgG
Antigen Source	Human

GRB10 Antibody (N-term) - Additional Information

Gene ID 2887

Antigen Region
1-30

Other Names

GRB10;GRBIR; KIAA0207; Growth factor receptor-bound protein 10; Growth factor receptor-bound protein 10; GRB10 adapter protein; Growth factor receptor-bound protein 10; Insulin receptor-binding protein Grb-IR

Dilution

WB~~1:1000

Target/Specificity

This GRB10 antibody is generated from rabbits immunized with a KLH conjugated synthetic peptide between 1-30 amino acids from the N-terminal region of human GRB10.

Format

Purified polyclonal antibody supplied in PBS with 0.09% (W/V) sodium azide. This antibody is purified through a protein A column, followed by peptide affinity purification.

Storage

Maintain refrigerated at 2-8°C for up to 2 weeks. For long term storage store at -20°C in small aliquots to prevent freeze-thaw cycles.

Precautions

GRB10 Antibody (N-term) is for research use only and not for use in diagnostic or therapeutic procedures.

GRB10 Antibody (N-term) - Protein Information

Name GRB10

Synonyms GRBIR, KIAA0207

Function

Adapter protein which modulates coupling of a number of cell surface receptor kinases with specific signaling pathways. Binds to, and suppress signals from, activated receptors tyrosine kinases, including the insulin (INSR) and insulin-like growth factor (IGF1R) receptors. The inhibitory effect can be achieved by 2 mechanisms: interference with the signaling pathway and increased receptor degradation. Delays and reduces AKT1 phosphorylation in response to insulin stimulation. Blocks association between INSR and IRS1 and IRS2 and prevents insulin-stimulated IRS1 and IRS2 tyrosine phosphorylation. Recruits NEDD4 to IGF1R, leading to IGF1R ubiquitination, increased internalization and degradation by both the proteasomal and lysosomal pathways. May play a role in mediating insulin-stimulated ubiquitination of INSR, leading to proteasomal degradation. Negatively regulates Wnt signaling by interacting with LRP6 intracellular portion and interfering with the binding of AXIN1 to LRP6. Positive regulator of the KDR/VEGFR-2 signaling pathway. May inhibit NEDD4-mediated degradation of KDR/VEGFR-2.

Cellular Location

Cytoplasm. Note=When complexed with NEDD4 and IGF1R, follows IGF1R internalization, remaining associated with early endosomes. Uncouples from IGF1R-containing endosomes before the sorting of the receptor to the lysosomal compartment (By similarity).

Tissue Location

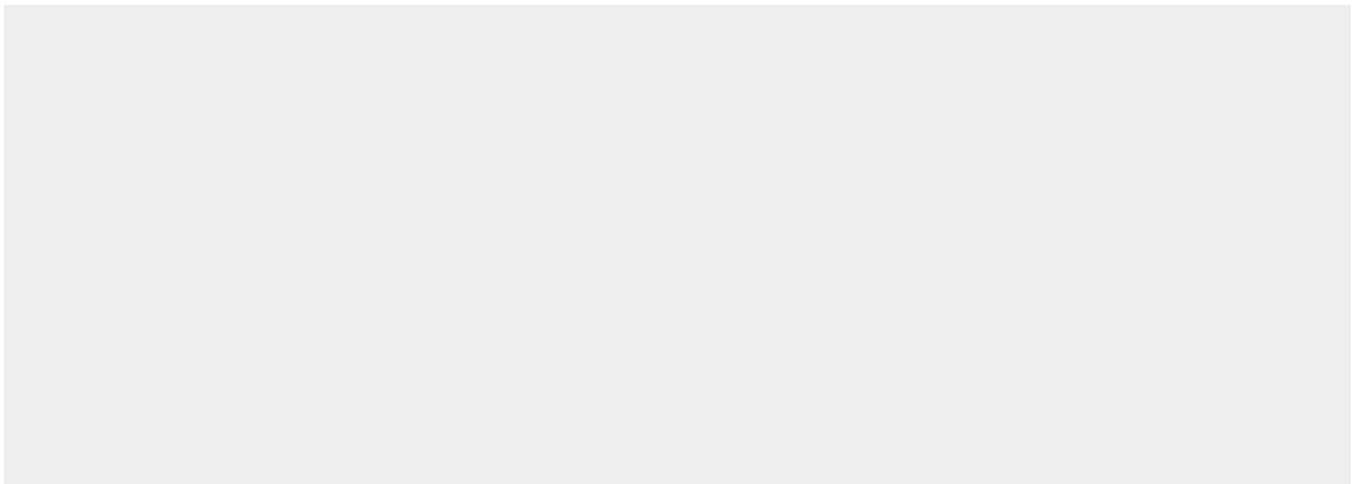
Widely expressed in fetal and adult tissues, including fetal and postnatal liver, lung, kidney, skeletal muscle, heart, spleen, skin and brain.

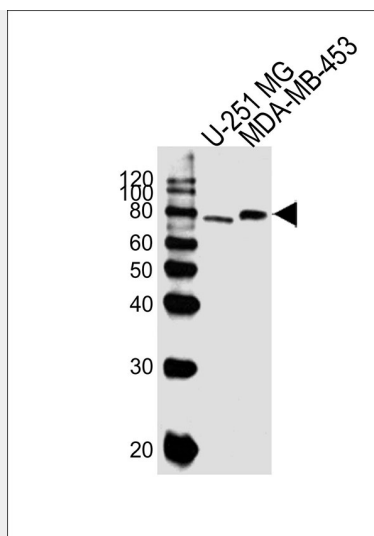
GRB10 Antibody (N-term) - Protocols

Provided below are standard protocols that you may find useful for product applications.

- [Western Blot](#)
- [Blocking Peptides](#)
- [Dot Blot](#)
- [Immunohistochemistry](#)
- [Immunofluorescence](#)
- [Immunoprecipitation](#)
- [Flow Cytometry](#)
- [Cell Culture](#)

GRB10 Antibody (N-term) - Images





Western blot analysis of lysates from U-251 MG,MDA-MB-453 cell line (from left to right), using GRB10 Antibody (N-term)(Cat. #AW5204). AW5204 was diluted at 1:1000 at each lane. A goat anti-rabbit IgG H&L(HRP) at 1:10000 dilution was used as the secondary antibody.

GRB10 Antibody (N-term) - Background

Adapter protein which modulates coupling of a number of cell surface receptor kinases with specific signaling pathways. Binds to, and suppress signals from, activated receptors tyrosine kinases, including the insulin (INSR) and insulin-like growth factor (IGF1R) receptors. The inhibitory effect can be achieved by 2 mechanisms: interference with the signaling pathway and increased receptor degradation. Delays and reduces AKT1 phosphorylation in response to insulin stimulation. Blocks association between INSR and IRS1 and IRS2 and prevents insulin-stimulated IRS1 and IRS2 tyrosine phosphorylation. Recruits NEDD4 to IGF1R, leading to IGF1R ubiquitination, increased internalization and degradation by both the proteasomal and lysosomal pathways. May play a role in mediating insulin-stimulated ubiquitination of INSR, leading to proteasomal degradation. Negatively regulates Wnt signaling by interacting with LRP6 intracellular portion and interfering with the binding of AXIN1 to LRP6. Positive regulator of the KDR/VEGFR-2 signaling pathway. May inhibit NEDD4-mediated degradation of KDR/VEGFR-2.

GRB10 Antibody (N-term) - References

Liu F., et al. Proc. Natl. Acad. Sci. U.S.A. 92:10287-10291(1995).
 O'Neil T.J., et al. J. Biol. Chem. 271:22506-22513(1996).
 Frantz J.D., et al. J. Biol. Chem. 272:2659-2667(1997).
 Dong L.Q., et al. J. Biol. Chem. 272:29104-29112(1997).
 Nantel A., et al. J. Biol. Chem. 273:10475-10484(1998).