

**NRAS Antibody (N-term)**  
**Mouse Monoclonal Antibody (Mab)**  
**Catalog # AW5189**

**Specification**

---

**NRAS Antibody (N-term) - Product Information**

Application	WB,E
Primary Accession	<a href="#">P01111</a>
Other Accession	<a href="#">Q04970</a> , <a href="#">Q2MJK3</a> , <a href="#">P08556</a> , <a href="#">Q5F352</a>
Reactivity	Human
Predicted	Chicken, Mouse, Pig, Rat
Host	Mouse
Clonality	Monoclonal
Calculated MW	H=21 KDa
Isotype	IgG1
Antigen Source	Human

**NRAS Antibody (N-term) - Additional Information**

**Gene ID** 4893

**Antigen Region**  
70-101

**Other Names**  
GTPase NRas; Transforming protein N-Ras;NRAS; HRAS1

**Dilution**  
WB~~1:1000

**Target/Specificity**  
This NRAS antibody is generated from mice immunized with a KLH conjugated synthetic peptide between 70-101 amino acids from the N-terminal region of human NRAS.

**Format**  
Purified monoclonal antibody supplied in PBS with 0.09% (W/V) sodium azide. This antibody is purified through a protein G column, followed by dialysis against PBS.

**Storage**  
Maintain refrigerated at 2-8°C for up to 2 weeks. For long term storage store at -20°C in small aliquots to prevent freeze-thaw cycles.

**Precautions**  
NRAS Antibody (N-term) is for research use only and not for use in diagnostic or therapeutic procedures.

**NRAS Antibody (N-term) - Protein Information**

**Name** NRAS

**Synonyms** HRAS1

**Function**

Ras proteins bind GDP/GTP and possess intrinsic GTPase activity.

**Cellular Location**

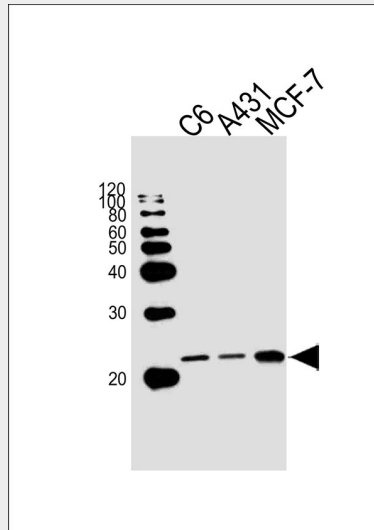
Cell membrane; Lipid-anchor; Cytoplasmic side. Golgi apparatus membrane; Lipid-anchor  
Note=Shuttles between the plasma membrane and the Golgi apparatus

**NRAS Antibody (N-term) - Protocols**

Provided below are standard protocols that you may find useful for product applications.

- [Western Blot](#)
- [Blocking Peptides](#)
- [Dot Blot](#)
- [Immunohistochemistry](#)
- [Immunofluorescence](#)
- [Immunoprecipitation](#)
- [Flow Cytometry](#)
- [Cell Culture](#)

**NRAS Antibody (N-term) - Images**



Western blot analysis of lysates from rat C6,A431,MCF-7 cell line (from left to right), using NRAS Antibody (N-term)(Cat. #AW5189). AW5189 was diluted at 1:1000 at each lane. A goat anti-mouse IgG H&L(HRP) at 1:10000 dilution was used as the secondary antibody.Lysates at 20ug per lane.

**NRAS Antibody (N-term) - Background**

Ras proteins bind GDP/GTP and possess intrinsic GTPase activity.

**NRAS Antibody (N-term) - References**

Hall A. et al. Nucleic Acids Res. 13:5255-5268(1985).