

NPIPL2 Antibody (C-term)
Affinity Purified Rabbit Polyclonal Antibody (Pab)
Catalog # AW5185

Specification

NPIPL2 Antibody (C-term) - Product Information

Application	WB,E
Primary Accession	A6NHN6
Reactivity	Human
Host	Rabbit
Clonality	Polyclonal
Calculated MW	H=51 KDa
Isotype	Rabbit IgG
Antigen Source	Human

NPIPL2 Antibody (C-term) - Additional Information

Gene ID 440348

Antigen Region
300-327

Other Names
NPIPL2;Nuclear pore complex-interacting protein-like 2

Dilution
WB~~ 1:1000

Target/Specificity
This NPIPL2 antibody is generated from rabbits immunized with a KLH conjugated synthetic peptide between 300-327 amino acids from the C-terminal region of human NPIPL2.

Format
Purified polyclonal antibody supplied in PBS with 0.09% (W/V) sodium azide. This antibody is purified through a protein A column, followed by peptide affinity purification.

Storage
Maintain refrigerated at 2-8°C for up to 2 weeks. For long term storage store at -20°C in small aliquots to prevent freeze-thaw cycles.

Precautions
NPIPL2 Antibody (C-term) is for research use only and not for use in diagnostic or therapeutic procedures.

NPIPL2 Antibody (C-term) - Protein Information

Name NPIP15

Synonyms NPIPL2

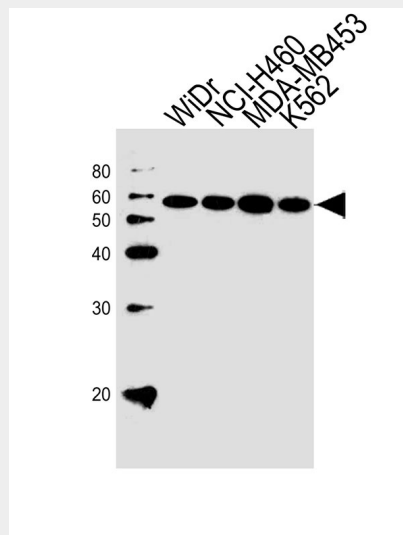
Cellular Location
Secreted.

NPIPL2 Antibody (C-term) - Protocols

Provided below are standard protocols that you may find useful for product applications.

- [Western Blot](#)
- [Blocking Peptides](#)
- [Dot Blot](#)
- [Immunohistochemistry](#)
- [Immunofluorescence](#)
- [Immunoprecipitation](#)
- [Flow Cytometry](#)
- [Cell Culture](#)

NPIPL2 Antibody (C-term) - Images



Western blot analysis of lysates from WiDr, NCI-H460, MDA-MB453, K562 cell line (from left to right), using NPIPL2 Antibody (C-term) (Cat. #AW5185). AW5185 was diluted at 1:1000 at each lane. A goat anti-rabbit IgG H&L(HRP) at 1:10000 dilution was used as the secondary antibody.

NPIPL2 Antibody (C-term) - Background

The function of this protein is unknown.

NPIPL2 Antibody (C-term) - References

Martin J., et al. Nature 432:988-994(2004).