

**GCGR Antibody (Center)**  
**Affinity Purified Rabbit Polyclonal Antibody (Pab)**  
**Catalog # AW5182**

**Specification**

---

**GCGR Antibody (Center) - Product Information**

Application	WB,E
Primary Accession	<a href="#">P47871</a>
Reactivity	Human, Mouse
Predicted	Rat
Host	Rabbit
Clonality	Polyclonal
Calculated MW	H=54;M=55;Rat=55 KDa
Isotype	Rabbit IgG
Antigen Source	HUMAN

**GCGR Antibody (Center) - Additional Information**

**Gene ID** 2642

**Other Names**

Glucagon receptor, GL-R; GCGR

**Dilution**

WB~~1:1000

**Target/Specificity**

This GCGR antibody is generated from rabbits immunized with a KLH conjugated synthetic peptide selected from the C-terminal region of human FOXC1.

**Format**

Purified polyclonal antibody supplied in PBS with 0.09% (W/V) sodium azide. This antibody is purified through a protein A column, followed by peptide affinity purification.

**Storage**

Maintain refrigerated at 2-8°C for up to 2 weeks. For long term storage store at -20°C in small aliquots to prevent freeze-thaw cycles.

**Precautions**

GCGR Antibody (Center) is for research use only and not for use in diagnostic or therapeutic procedures.

**GCGR Antibody (Center) - Protein Information**

**Name** GCGR

**Function**

G-protein coupled receptor for glucagon that plays a central role in the regulation of blood glucose

levels and glucose homeostasis. Regulates the rate of hepatic glucose production by promoting glycogen hydrolysis and gluconeogenesis. Plays an important role in mediating the responses to fasting. Ligand binding causes a conformation change that triggers signaling via guanine nucleotide-binding proteins (G proteins) and modulates the activity of down-stream effectors, such as adenylate cyclase. Promotes activation of adenylate cyclase. Besides, plays a role in signaling via a phosphatidylinositol-calcium second messenger system.

#### Cellular Location

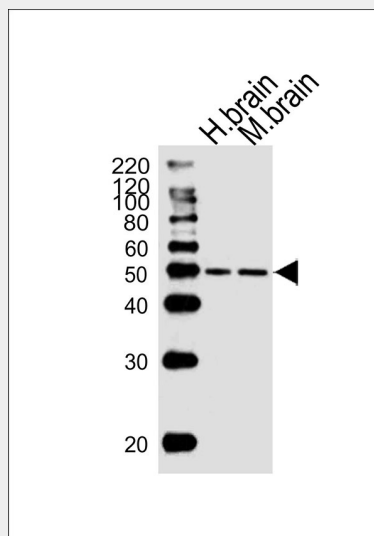
Cell membrane; Multi-pass membrane protein. Note=Is rapidly internalized after ligand-binding

#### GCGR Antibody (Center) - Protocols

Provided below are standard protocols that you may find useful for product applications.

- [Western Blot](#)
- [Blocking Peptides](#)
- [Dot Blot](#)
- [Immunohistochemistry](#)
- [Immunofluorescence](#)
- [Immunoprecipitation](#)
- [Flow Cytometry](#)
- [Cell Culture](#)

#### GCGR Antibody (Center) - Images



Western blot analysis of lysates from human brain and mouse brain tissue (from left to right), using GCGR Antibody (Center)(Cat. #AW5182). AW5182 was diluted at 1:1000 at each lane. A goat anti-rabbit IgG H&L(HRP) at 1:10000 dilution was used as the secondary antibody. Lysates at 20ug per lane.

#### GCGR Antibody (Center) - Background

This is a receptor for glucagon which plays a central role in regulating the level of blood glucose by controlling the rate of hepatic glucose production and insulin secretion. The activity of this receptor is mediated by G proteins which activate adenylyl cyclase and also a phosphatidylinositol-calcium second messenger system.