

**ANXA5 Antibody (Center)**  
**Purified Rabbit Polyclonal Antibody (Pab)**  
**Catalog # AW5139**

**Specification**

---

**ANXA5 Antibody (Center) - Product Information**

Application	WB,E
Primary Accession	<a href="#">P08758</a>
Reactivity	Human, Mouse
Predicted	Rat
Host	Rabbit
Clonality	polyclonal
Calculated MW	H=36;M=36;Rat=36 KDa
Isotype	Rabbit IgG
Antigen Source	HUMAN

**ANXA5 Antibody (Center) - Additional Information**

**Gene ID** 308

**Antigen Region**  
94-128

**Other Names**

Annexin A5, Anchorin CII, Annexin V, Annexin-5, Calphobindin I, CBP-I, Endonexin II, Lipocortin V, Placental anticoagulant protein 4, PP4, Placental anticoagulant protein I, PAP-I, Thromboplastin inhibitor, Vascular anticoagulant-alpha, VAC-alpha, ANXA5, ANX5, ENX2, PP4

**Dilution**

WB~~1:1000

**Target/Specificity**

This ANXA5 antibody is generated from a rabbit immunized with a KLH conjugated synthetic peptide between 94-128 amino acids from the Central region of human ANXA5.

**Format**

Purified polyclonal antibody supplied in PBS with 0.09% (W/V) sodium azide. This antibody is purified through a protein A column, followed by peptide affinity purification.

**Storage**

Maintain refrigerated at 2-8°C for up to 2 weeks. For long term storage store at -20°C in small aliquots to prevent freeze-thaw cycles.

**Precautions**

ANXA5 Antibody (Center) is for research use only and not for use in diagnostic or therapeutic procedures.

**ANXA5 Antibody (Center) - Protein Information**

**Name** ANXA5

**Synonyms** ANX5, ENX2, PP4

**Function**

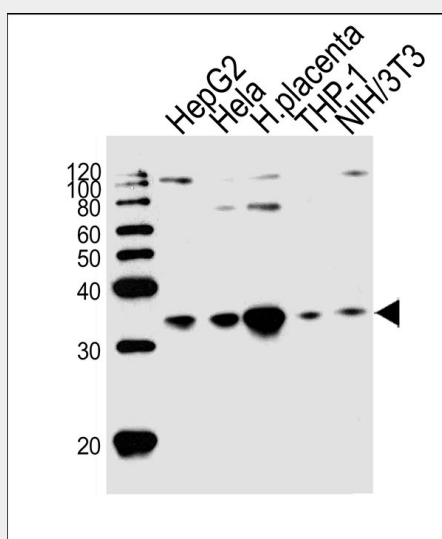
This protein is an anticoagulant protein that acts as an indirect inhibitor of the thromboplastin-specific complex, which is involved in the blood coagulation cascade.

**ANXA5 Antibody (Center) - Protocols**

Provided below are standard protocols that you may find useful for product applications.

- [Western Blot](#)
- [Blocking Peptides](#)
- [Dot Blot](#)
- [Immunohistochemistry](#)
- [Immunofluorescence](#)
- [Immunoprecipitation](#)
- [Flow Cytometry](#)
- [Cell Culture](#)

**ANXA5 Antibody (Center) - Images**



Western blot analysis of lysates from HepG2, Hela cell line, human placenta tissue, THP-1, mouse NIH/3T3 cell line (from left to right), using ANXA5 Antibody (Center) (Cat. #AW5139). AW5139 was diluted at 1:1000 at each lane. A goat anti-rabbit IgG H&L (HRP) at 1:10000 dilution was used as the secondary antibody.

**ANXA5 Antibody (Center) - Background**

This protein is an anticoagulant protein that acts as an indirect inhibitor of the thromboplastin-specific complex, which is involved in the blood coagulation cascade.

**ANXA5 Antibody (Center) - References**

Funakoshi T., et al. *Biochemistry* 26:8087-8092(1987).  
Iwasaki A., et al. *Biochem.* 102:1261-1273(1987).

Maurer-Fogy I., et al. Eur. J. Biochem. 174:585-592(1988).  
Kaplan R., et al. J. Biol. Chem. 263:8037-8043(1988).  
Pepinsky R.B., et al. J. Biol. Chem. 263:10799-10811(1988).